

Optimizing Student Transportation

January 23, 2020

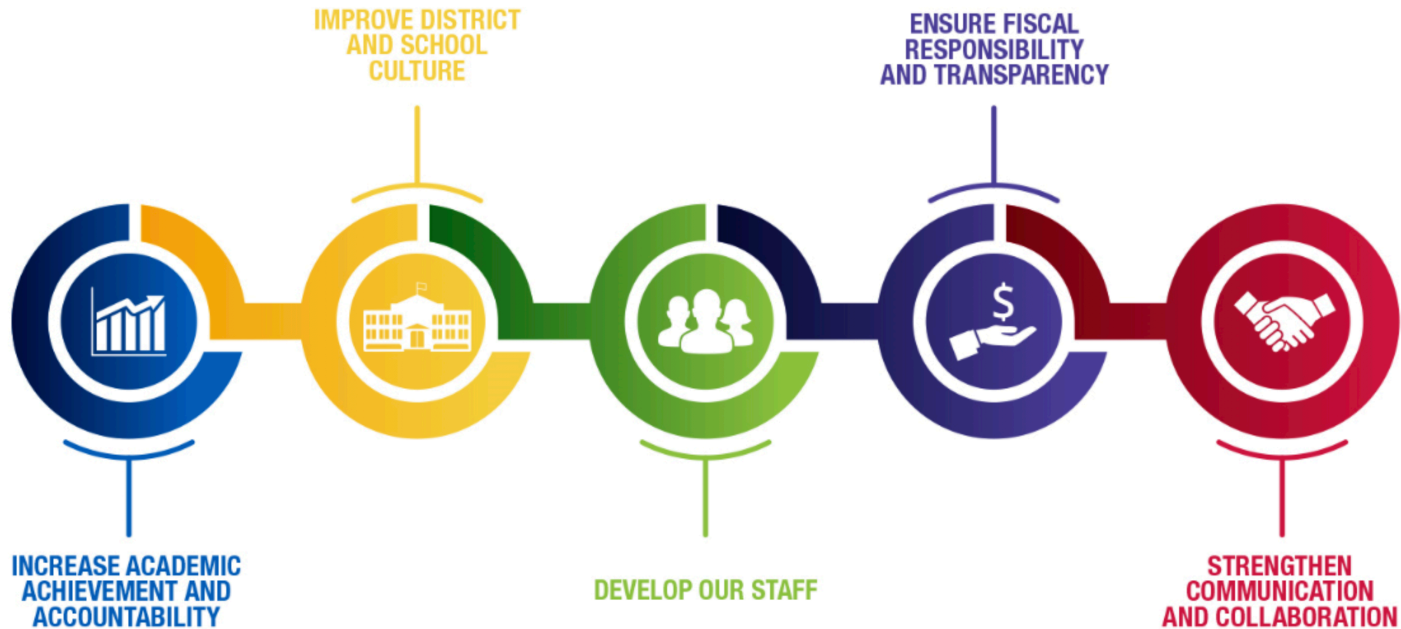


Presenter:
David Solik-Fifarek, Sr. Director, Business Services

MILWAUKEE
PUBLIC SCHOOLS

Dr. Keith P. Posley, Superintendent of Schools

Five Priorities for Success



Bell Schedule Change Concept

Current State

1. 2 Tier Model (roughly):
 - a) 6:30a-7:30a/2:30p-3:30p Tier 1
 - b) 7:30a-8:30a/3:30p-4:30p Tier 2
2. Approx. \$60,000,000 of the total \$65,000,000 budget dedicated to Home to School yellow bus services
3. 1,000 buses – 2,000 routes – 2,500 drivers from 9 private contractors (approx.)
4. Average student distance from school = 3.34 of ALL students/3.6 of bused students
5. Average route miles per run = **17 miles**
6. Average route time to school = **52 minutes** (624 routes over 1 hours long ~ 31%)
7. Average 19 miles an hour travel speed on the road



Bell Schedule Change Concept

Future State

- *Service Reductions*

1. 3 Tier Model (High School Early):

- a) 6:45a-7:10a/2:25p-3:00p Tier 1 – High School and Traditional MS

- b) 7:45a-8:10a/3:10p-4:00p Tier 2 – K8 and K5 Traditional Schools

- c) 8:45a-9:10a/4:10p-5:00p Tier 3 – K8, K5 Specialty Schools or Traditional Schools with ESL/BIL

- **Long Term: 750-800 buses total**

- **\$4-5 million savings***

2. 3 Tier Model (High School Late):

- a) 6:45a-7:10a/2:10p-2:50p Tier 1 –K8, K5 Specialty or Traditional Schools with ESL/BIL

- b) 7:45a-8:10a/3:10p-3:50p Tier 2 – K8 and K5 Traditional Schools

- c) 8:35a-9:00a/4:15p-4:50p Tier 3 – High School and Traditional MS

- **Long Term: 700-7500 buses total**

- **\$5-6 million savings***



Re-Tiering of Schools

Opportunities

1. Fewer buses needed - roughly \$2-3 million saved for every 100 bus reduction
2. Fewer drivers needed – stabilizes workforce
3. More daily hours for each bus driver – stabilizes workforce
4. Shorter ride times for all students (1 hour -> 40 minutes) – also positively impacts behavior management
 - Under 3 Tier: Average route miles per run = **10.92 miles**
 - Is currently 17 miles in 2 tier
 - Under 3 Tier: Average route time to school = **38 minutes** (75 out of 2132 over 1 hour = 3.5%)
 - Is currently 52 minutes in 2 tier (624 routes over 1 hours long ~ 31%)
5. Later school times for high school = more hours of sleep, better attendance = higher achievement
6. Elem – Elem – MS/HS re-tiering minimizes impact of change due to current state of bell schedule
7. Positively impacts traffic by reducing buses and spreading out travel for 3 tiers instead of 2



Case Studies

CABARRUS COUNTY

- Implemented 3 Tier Bus Plan 2009/2010
- Increase in instructional hours
- Additional flexibility in meeting instructional hours requirement
- Reduce absenteeism and turnover for bus drivers – most bus drivers would become full time employees
- Increase safety on buses – savings allotted to the purchase of video camera systems for all buses
- Financial benefits
 - Tier 1 - High Schools 7:15 to 2:15
(6 elementary schools 7:30 to 2:15)
 - Tier 2 – Most Elementary Schools – 8:15 – 3:00
 - Tier 3 – Middle Schools – 9:00 – 4:00

WAKE COUNTY

- Developed in 1993
- Over a 11 year period added 40 buses instead of 160 buses based on ridership increases and new schools
- Reduced the overall ride time for students
- Saved Wake Co \$100M in transportation funding
- Operates at 100% Efficiency
- Tier 1 – 7:30 – 2:15
- Tier 2 – 8:15 – 3:00
- Tier 3 – 9:15 – 3:45



Case Studies

UNION COUNTY

- Tier 1 – Elementary 7:30 to 2:00
- Tier 2 – High 8:00 – 2:55
- Tier 3 – Middle 8:45 – 3:45
- Increased Efficiency Rating – 100%

Leveled Expenditures

CHARLOTTE MECKLENBURG

- Various start times for elementary and middle grade levels
- 7:30 – 1:45 Elementary
- 8:30 – 2:45 Elementary
- 9:15 – 3:30 Elementary
- 8:00 – 3:00 Middle
- 8:45 – 3:45 Middle
- 7:15 – 2:15 High

INDIANAPOLIS Public Schools implemented 2016-2017

- IPS 'believes the plan has the potential to save \$2 million in annual savings and cut about 30 buses'
- Tier one will be from 7:20 a.m. to 2:20 p.m
- Tier two will be from 8:15 a.m. to 2:50 p.m
- Third tier is from 9:20 a.m. to 3:55 p.m

<http://fox59.com/2017/01/26/ips-announces-3-tier-bell-schedule-for-2017-2018-school-year/>



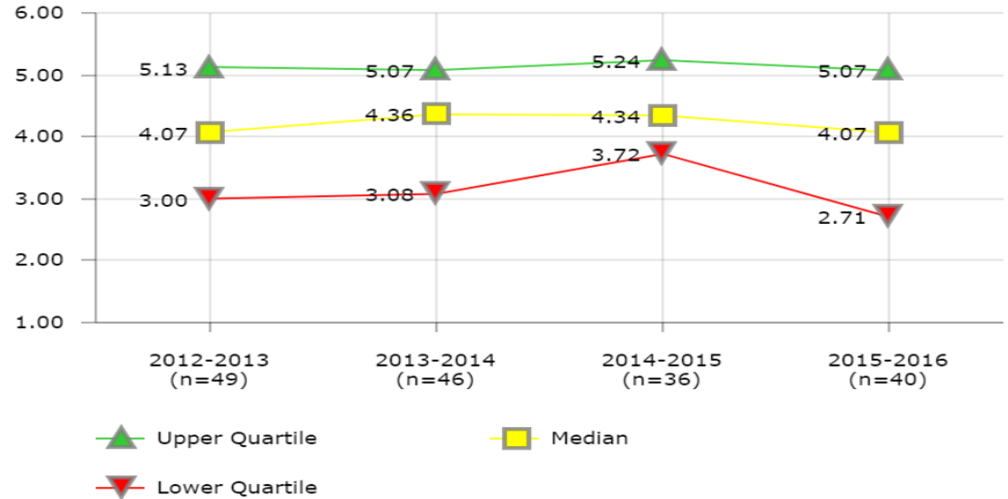
Council Greater City Schools KPI

Most Runs Per Bus

Districts in Best Quartile 2015-2016 (between 6-8 runs per bus)

- Anchorage School District
- Broward County Public Schools
- Charlotte-Mecklenburg Schools
- Des Moines Public Schools
- Hillsborough County Public Schools
- Miami-Dade County Public Schools
- Orange County Public School District
- Palm Beach County School District
- San Diego Unified School District
- St. Paul Public Schools

MPS: 3.80 runs per bus



Thank you.

Presenter: David Solik-Fifarek, Sr. Director, Business Services



Dr. Keith P. Posley, Superintendent

2020 Milwaukee Public Schools • 9