

Regional Showcase – Southwest Region Curtin Leadership Academy

December 8, 2022

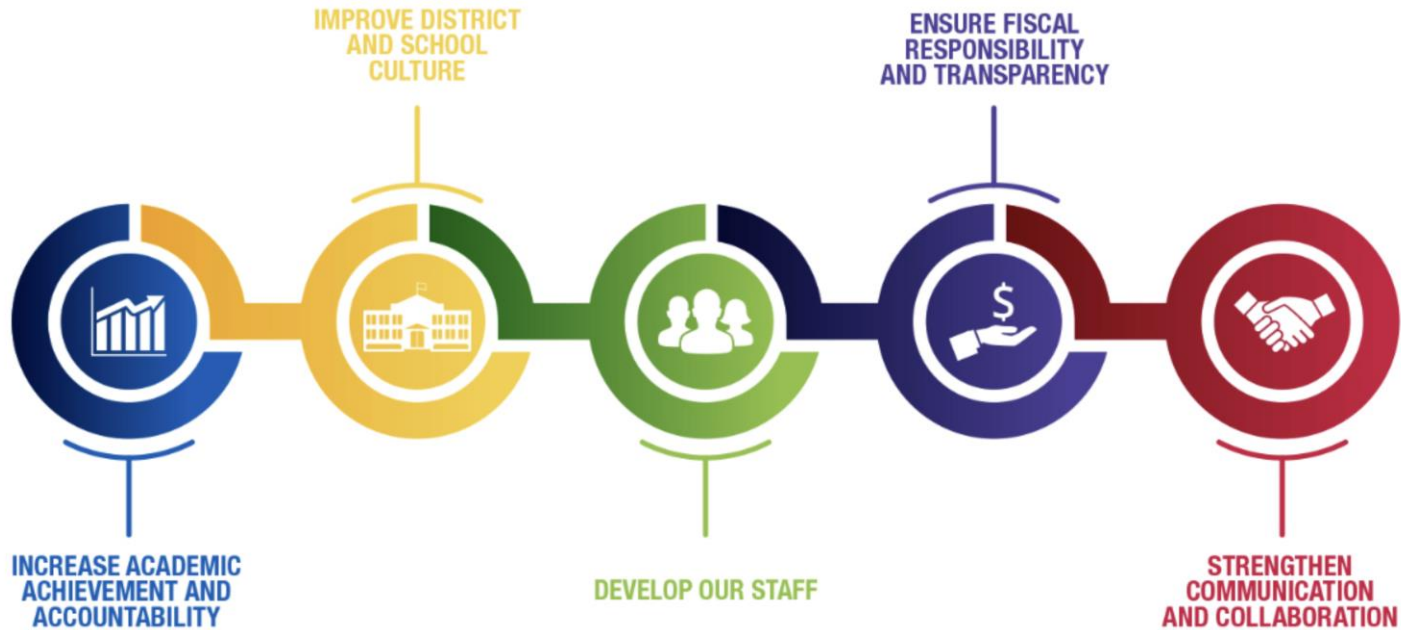


Presenters:

Mr. Eduardo Galvan, Regional Superintendent
Ms. Veronica Leshok, Principal, Curtin School

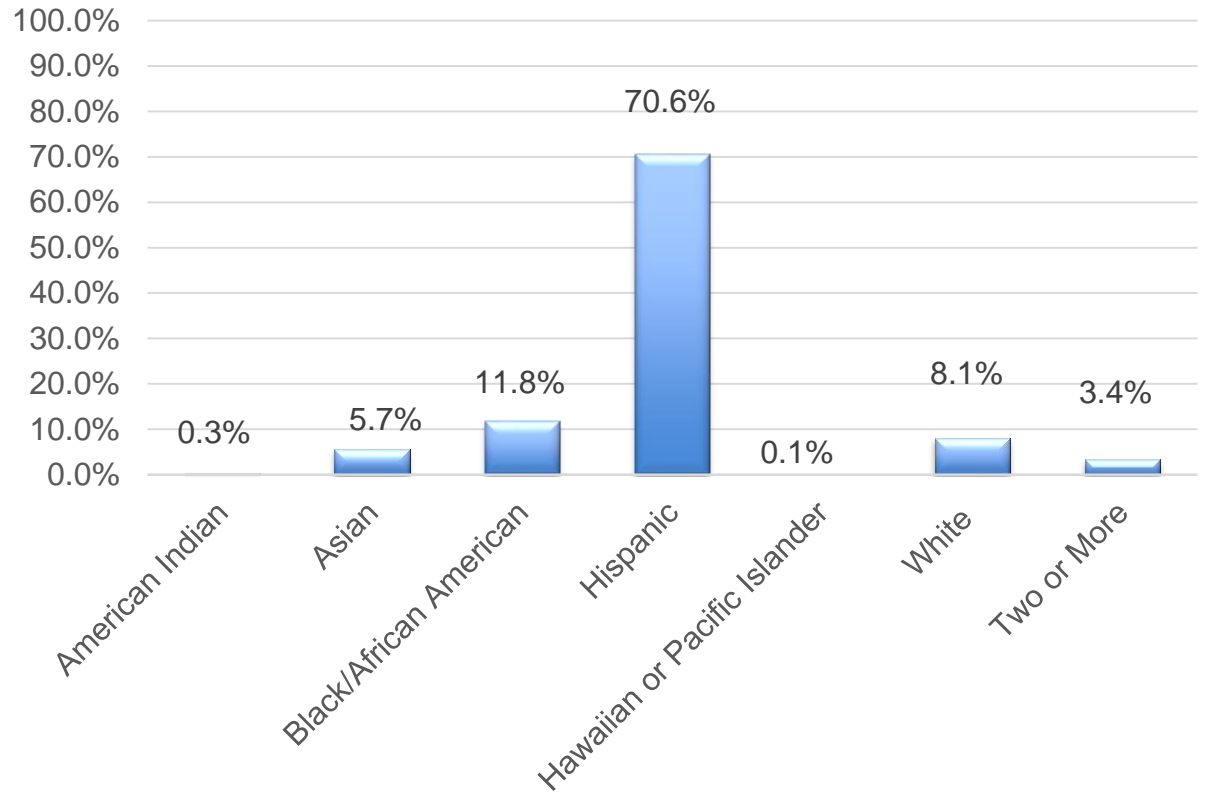
Dr. Keith P. Posley,
Superintendent

Five Priorities for Success



Southwest Region Demographics

- **11,910 students**
- **24 schools**
- **35.0% English learners**
- **22.6% students with disabilities**
- **81.9% economically disadvantaged**



2021-22 State Report Cards

School Name	Overall Score	Overall Accountability Rating	School Name	Overall Score	Overall Accountability Rating
Academy of Accelerated Learning	AR	Alternate Rating - Needs Improvement	Lincoln Avenue Elementary	57.1	Meets Few Expectations
ALBA - Academia de Lenguaje y Bellas Artes	73.8	Exceeds Expectations	Longfellow Elementary	67.2	Meets Expectations
Allen-Field Elementary	57.1	Meets Few Expectations	Lowell International Elementary	46.8	Fails to Meet Expectations
Curtin Elementary	70.1	Exceeds Expectations	Manitoba Elementary	57	Meets Few Expectations
Doerfler Elementary	64.1	Meets Expectations	Milwaukee Spanish Immersion	54.1	Meets Few Expectations
Fairview Elementary	77.6	Exceeds Expectations	Mitchell Elementary	63.7	Meets Expectations
Forest Home Elementary	63.3	Meets Expectations	Morgandale Elementary	64.4	Meets Expectations
Grant Elementary	52.3	Meets Few Expectations	Riley Dual Language Montessori School	58.4	Meets Expectations
Greenfield Bilingual	59.6	Meets Expectations	Rogers Street Academy	60.2	Meets Expectations
Hayes Bilingual School	68.4	Meets Expectations	Vieau Elementary	59.2	Meets Expectations
Honey Creek Elementary	56.9	Meets Few Expectations	Whitman Elementary	64.7	Meets Expectations
Kagel Elementary	71.2	Exceeds Expectations	Zablocki Elementary	57.7	Meets Few Expectations



Due to the COVID-19 pandemic, please use caution when interpreting scores and ratings. Careful review of the detailed data on all pages is encouraged. Also, see <https://dpi.wi.gov/accountability/resources>.



Curtin Learning Vision Statement

Jeremiah Curtin Leadership Academy, a [STEM](#) focused school, is committed to providing a [culturally responsive education](#) that meets the needs of the whole-child resulting in equitable outcomes for all students in the areas of academic achievement and social-emotional development.

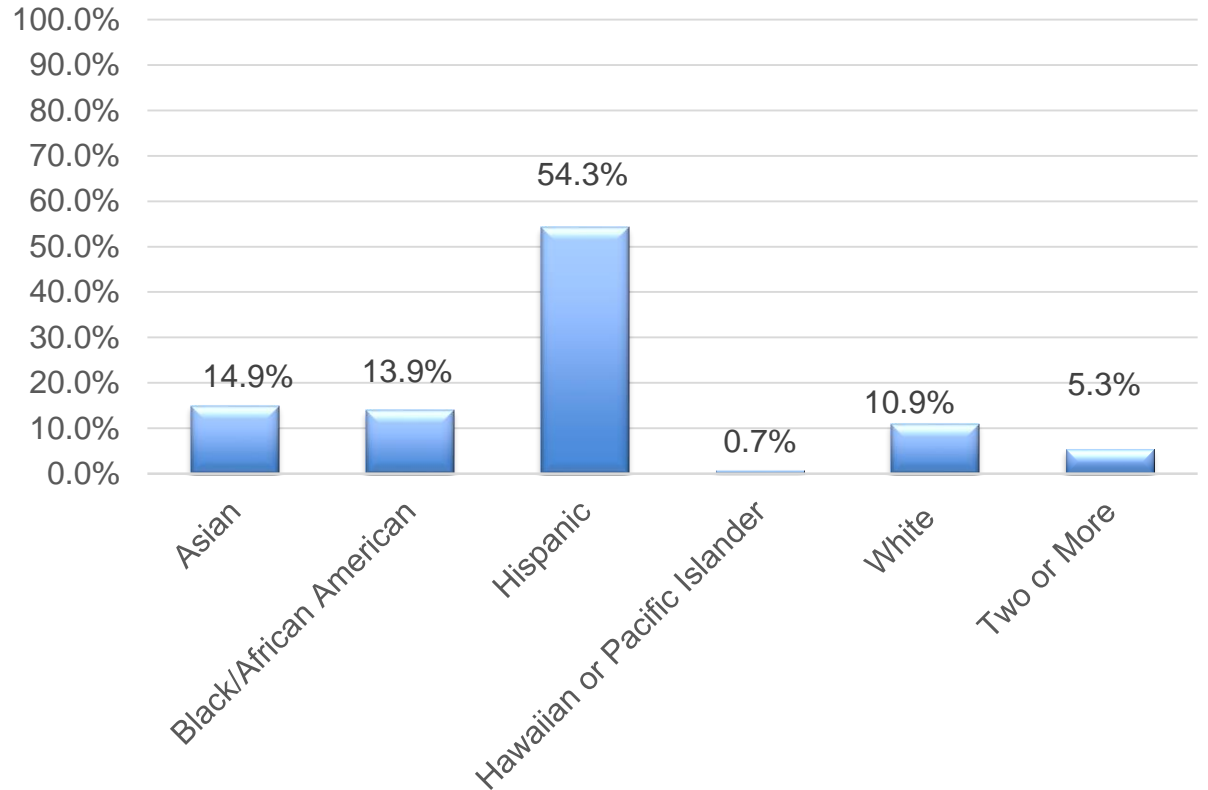
At Jeremiah Curtin Leadership Academy, all learners will engage in leadership and learning experiences that are meaningful with real-world application by:

- Engaging
- Thinking
- Collaborating
- Innovating
- Creating

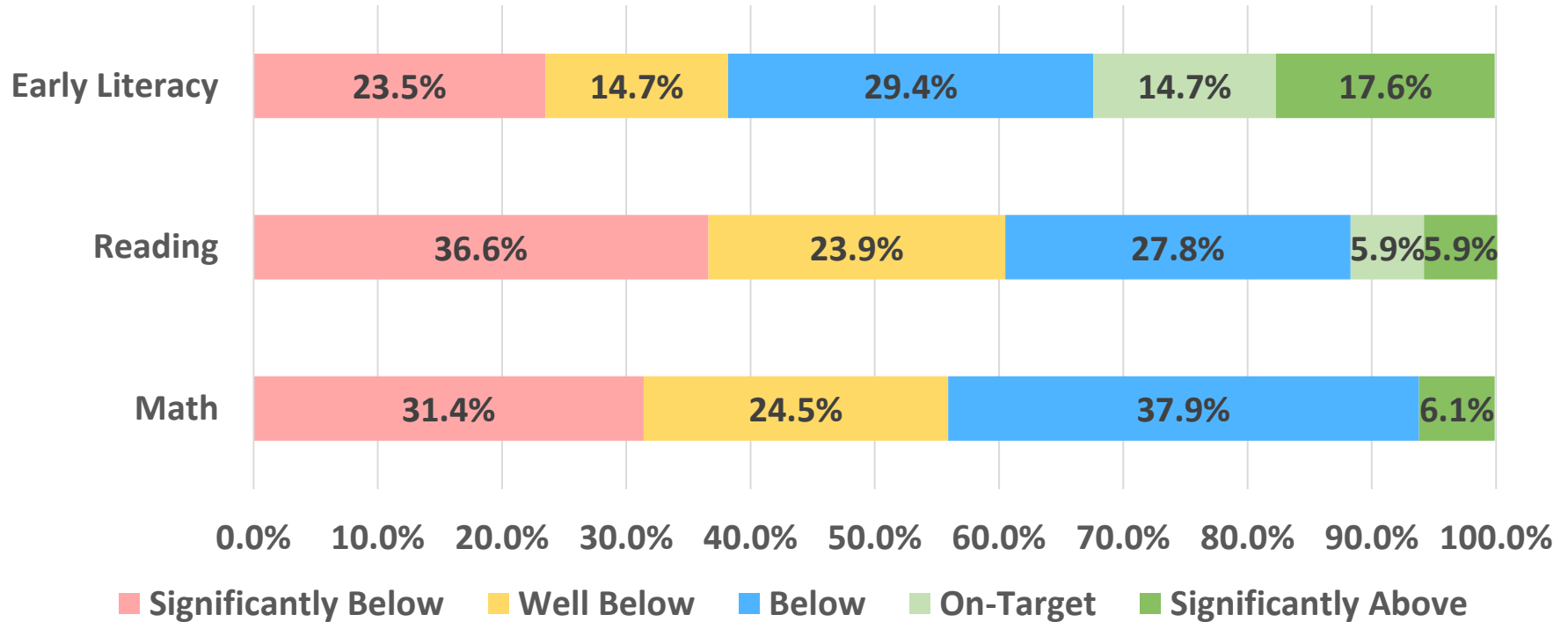


Curtin Leadership Academy

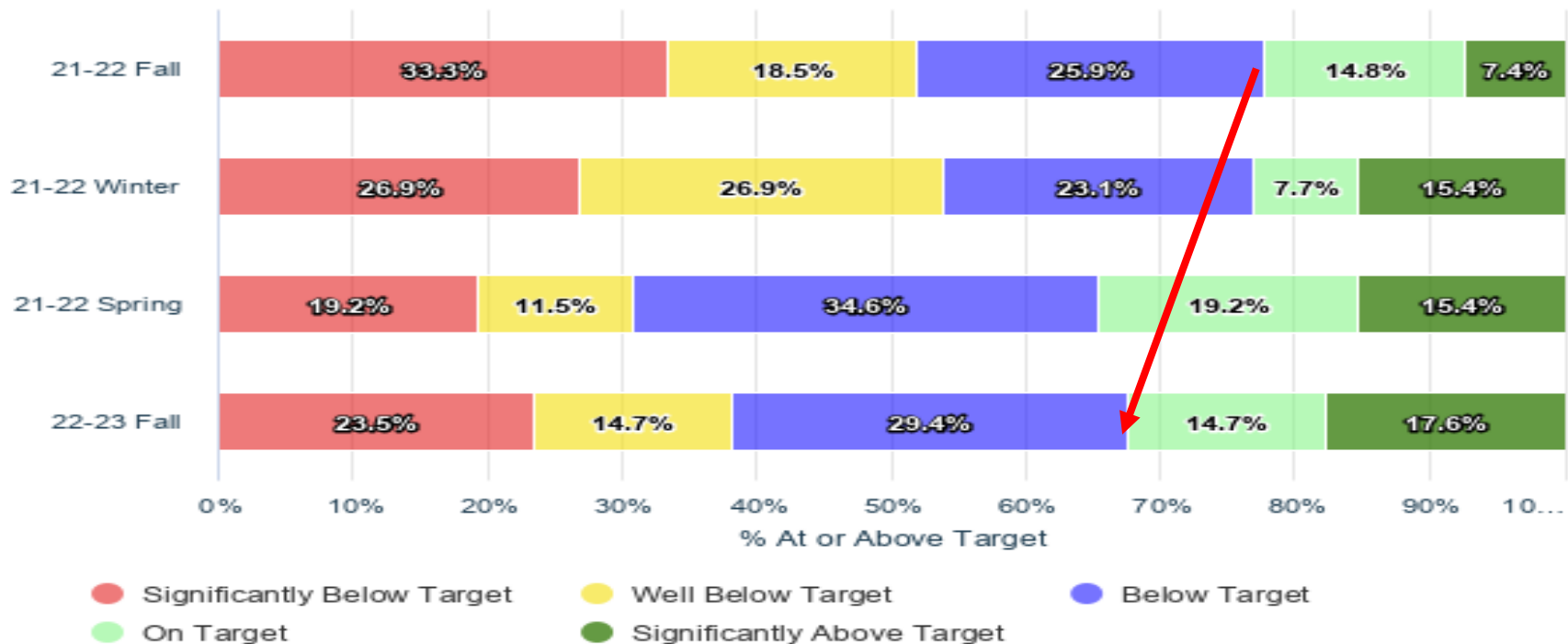
- 302 students
- 25.2% English language learners
- 16.9% students with disabilities
- 87.7% economically disadvantaged



Curtin Leadership Academy – Star Fall Screening



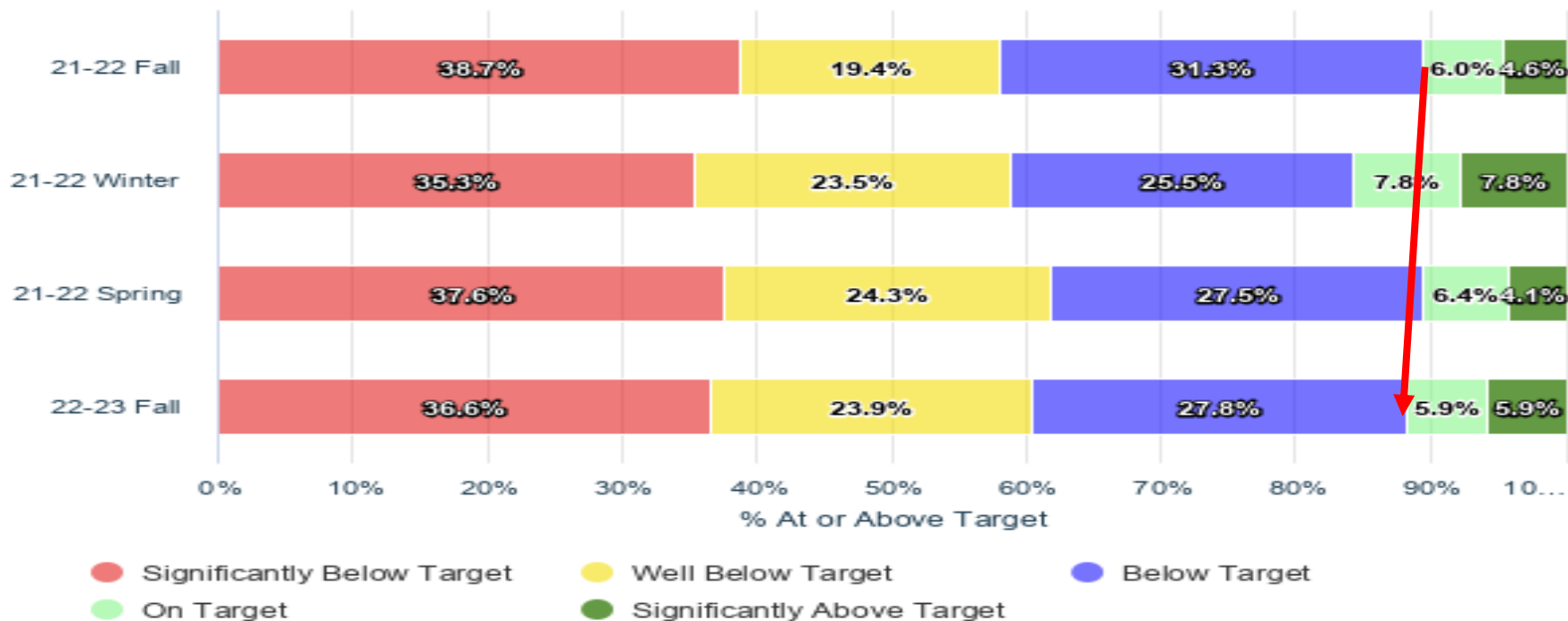
Early Literacy



Starting the year 10.1% ahead of last fall!



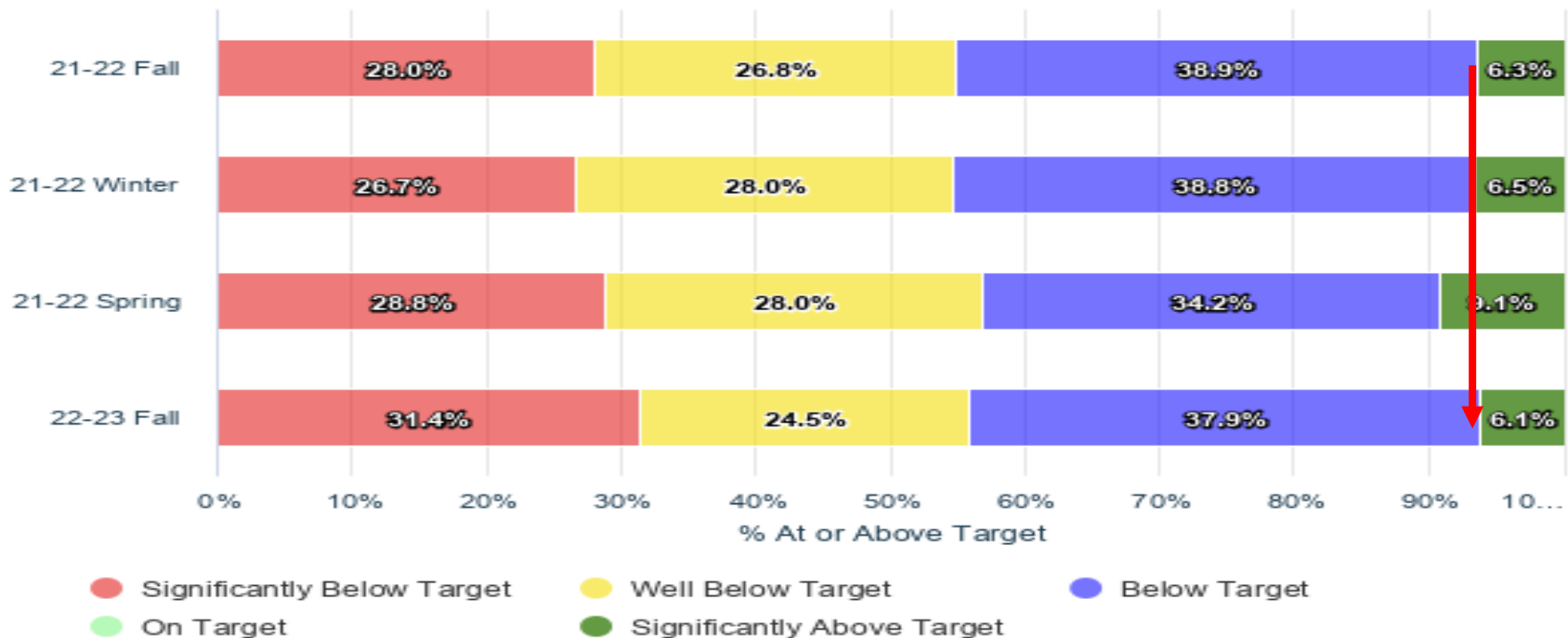
Reading



Starting the year 1.2% ahead of last fall!



Math



Starting at the same place as last fall.

School Programs

- GE Foundation School STEM focused
- Project Lead the Way (MSOE) K-8th
- Leadership & Character Building
- SEL
- Family Engagement
- Partnerships



PLTW



Points of Pride

BLMA BUDDIES

WHAT WORKS FOR SPECIAL-NEEDS LEARNERS

Karen R. Harris and Steve Graham, *Series Editors*

Over 145,000 in Print

explicit instruction

Effective and Efficient Teaching

ANITA L. ARCHER
CHARLES A. HUGHES



data-analysisstrategy loop
analyzing student work
data protocol



Opportunities for Growth

- Explore why math has been stagnant
- Importance of continuing to meet the diverse student needs
- Continue to seek out and incorporate student and family voice
- Continue to focus on tier 1 and ambitious instruction and leveraging the work of PLCs relative to tier 1 data



Thank you.

Presenters: Mr. Eduardo Galvan, Regional Superintendent
Ms. Veronica Leshok, Principal, Curtin School



Dr. Keith P. Posley, *Superintendent*