

# Equity Update

October 9, 2018



MILWAUKEE  
PUBLIC SCHOOLS

**Presenters:**

Latish Reed, Ph.D., Equity Specialist

Keith P. Posley, Ed.D., *Interim Superintendent*

# Moving towards Equity & Culturally Responsive Practices



Leads to

**Equitable & Culturally Responsive Practices**

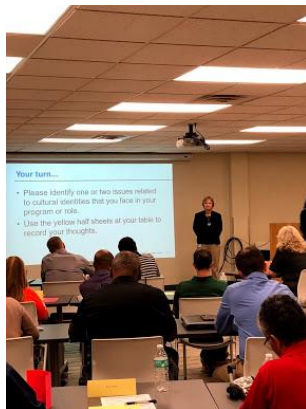
# Culturally Responsive Teaching Fellows

---

- Insert Video



# Department Equity & Culturally Responsive Trainings



# Other Equity & Culturally Responsive Professional Development

---

- Administrator Restorative Practices Training
- New Educators Institute
- Principal Leadership Institute
- Middle School Collaborative Principals & Leadership Teams
- Customer Service – Level III Cultural Awareness

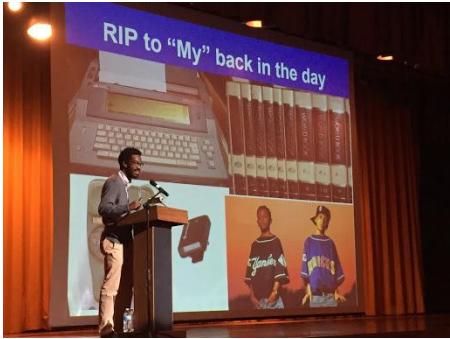
# Other Equity & Culturally Responsive Professional Development (Continued)

---

- Ongoing Collaboration
  - Black and Latino Male Achievement Department
  - Office of Civil Rights Resolution
  - Positive Behavior and Intervention Supports
- Project AWARE (Advancing Wellness and Resilience Education) – Added supports for Gender Inclusion Guidance
- Community Schools' focus on Culturally Responsive Teaching
- School-based Culturally Responsive Teaching Professional Development



# Equity, Education & Empowerment Series



# Milwaukee French Immersion School





# Next Steps

---

1. MPS-Wisconsin Department of Public Instruction – Equity Summit (October 18, 2018)
2. Continue education & collaboration with teams, offices, and departments
3. Develop Equity Guidance Document to accompany Equity Policy
4. MPS-Wisconsin Department of Public Instruction – Beyond Diversity Training (February 4 & 5, 2019)



# Thank you

**Presenter:**

Latish Reed, Ph.D., Equity Specialist, Office of Academics



Keith P. Posley, Ed.D., *Interim Superintendent*





Keith P. Posley, Ed.D., *Interim Superintendent*