

53206 Initiative Update

February 11, 2020

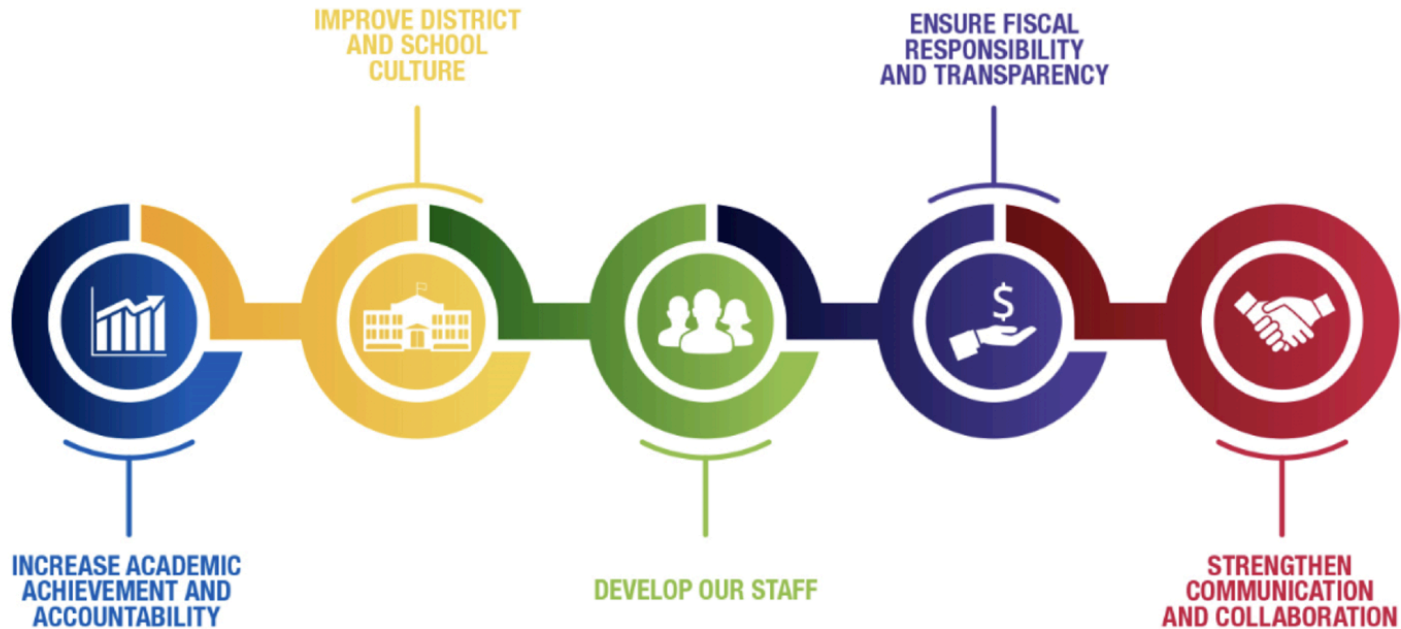


**MILWAUKEE
PUBLIC SCHOOLS**

Presenters: *Carletta Noland, Regional Superintendent Central Region*
Maurice E. Turner, Instructional Leadership Director Citywide Region

*Dr. Keith P. Posley,
Superintendent*

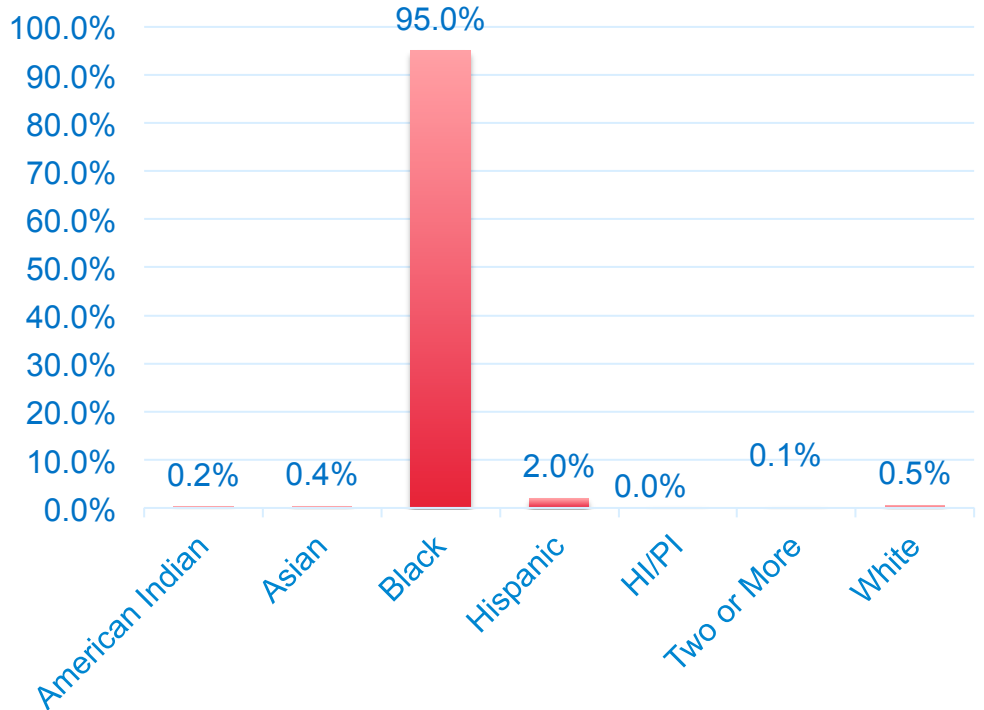
Five Priorities for Success



53206 Initiative

Demographics 2019-20

- 2,132 Students
- 8 Schools
- 0.2% English Language Learners
- 28.4% Students with Disabilities
- 93.2% Economically Disadvantaged

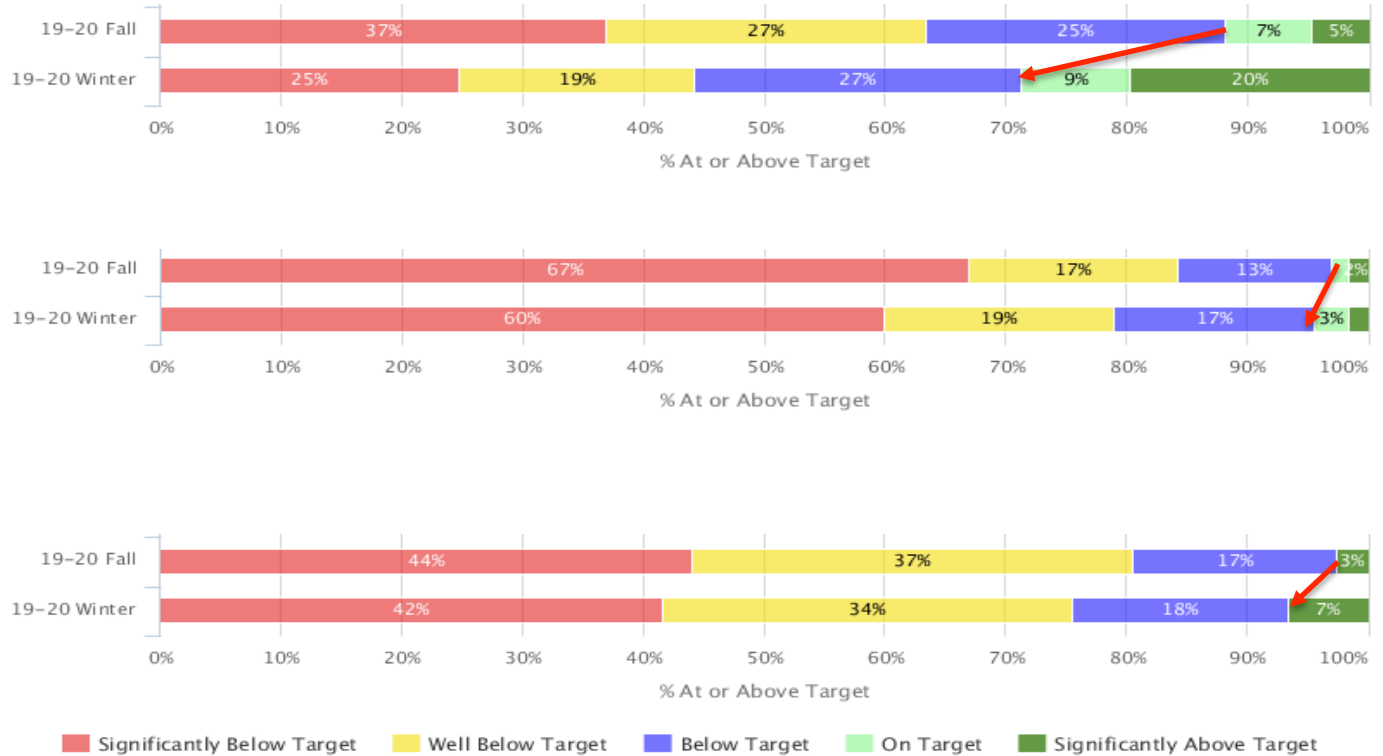


Star Results – 53206 Initiative

Early Literacy
55 more students on target to proficiency, 60 fewer students below basic

Reading
14 more students on target to proficiency, 103 fewer students below basic

Math
46 more students on target to proficiency, 146 fewer students below basic



Regional Development - 53206 Initiative

This initiative was developed as a means to address challenges facing students and families attending schools in the 53206 zip code.



53206 Initiative

- High Quality Instructional Practices
- Social Emotional Well-being
- Family Engagement
- Community Partnerships
- Teaching & Leadership Development

53206 Strategic Plan Process

Phase 1 Completed

- Reconfiguration of schools
- Trauma support specialists in all 53206 schools. Mobile teams in Auer and North Division
- Remodel of Andrew S. Douglas (including official name change)
- Opened Twilight Center in Andrew S. Douglas
- Opening of Success Center at Green Bay Avenue
- Full-time parent coordinator
- Supplemental teachers in 53206 schools
- Early childhood expansion
- NAF Academies at North in health sciences and information technology

Phase 2 In Progress

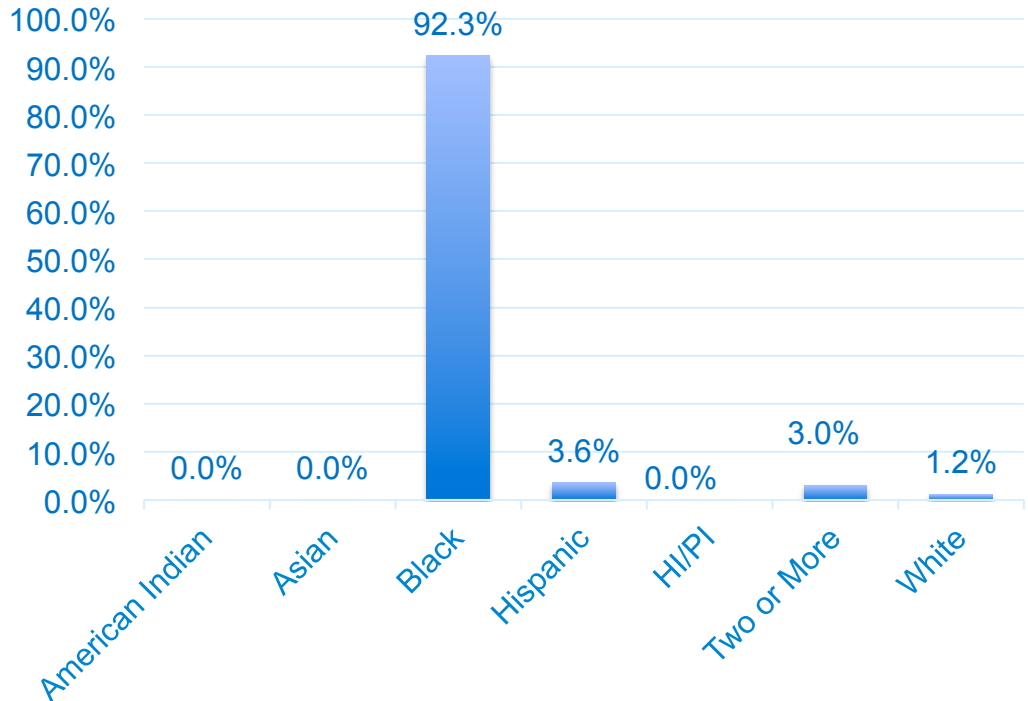
- Develop a 53206 Steering Committee
- Develop a strategic plan that encompasses the five tenets and the community school values of shared leadership, equity and cultural relevance
- Develop a logic model for strategic plan
- Conduct listening sessions with staff, parents and community within 53206 to inform development of planning process
- Complete Community Partnership Inventory
- Explore CLC opportunities in each 53206 school



Hopkins Lloyd

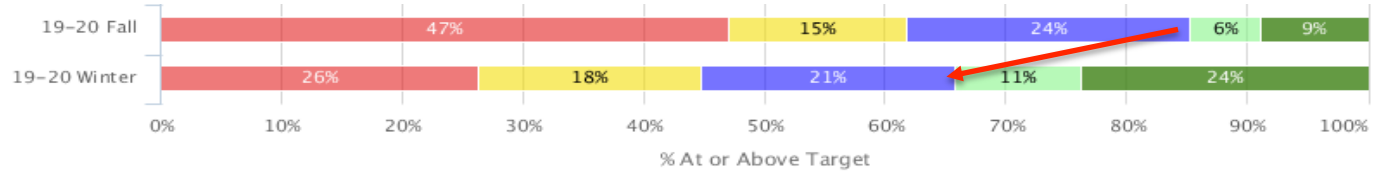
Demographics 2019-20

- 169 Students
- 0.6% English Language Learners
- 25.4% Students with Disabilities
- 91.7% Economically Disadvantaged

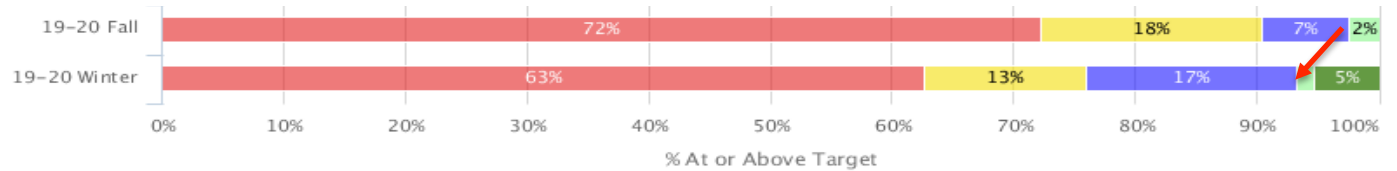


Star Results – Hopkins Lloyd

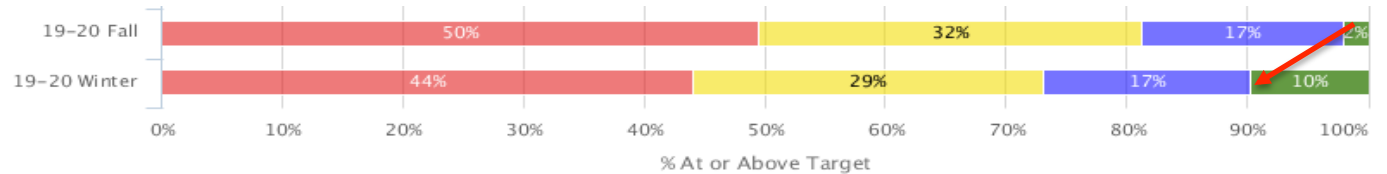
Early Literacy
8 more students on target to proficiency, 4 fewer students below basic



Reading
3 more students on target to proficiency, 18 fewer students below basic



Math
7 more students on target to proficiency, 14 fewer students below basic



■ Significantly Below Target
 ■ Well Below Target
 ■ Below Target
 ■ On Target
 ■ Significantly Above Target



Family Engagement and Community Partnerships

In Action

Homework Diners

- Bi-weekly themed family engagement event
- Families receive homework support from classroom teachers and volunteers
- Free community meal for the entire family
- Free parental resources to support learning
- On average approximately 7-10 families attend each event



Thank you.

