

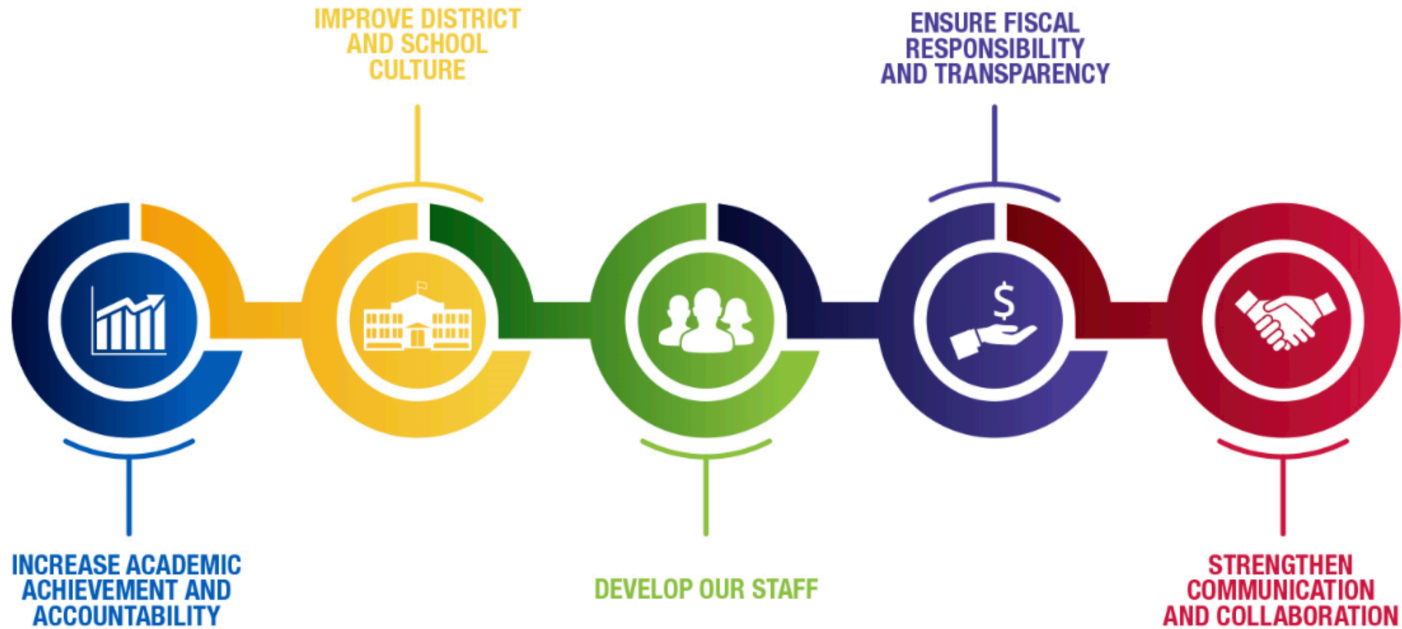
# ESSER III Overview

June 2021

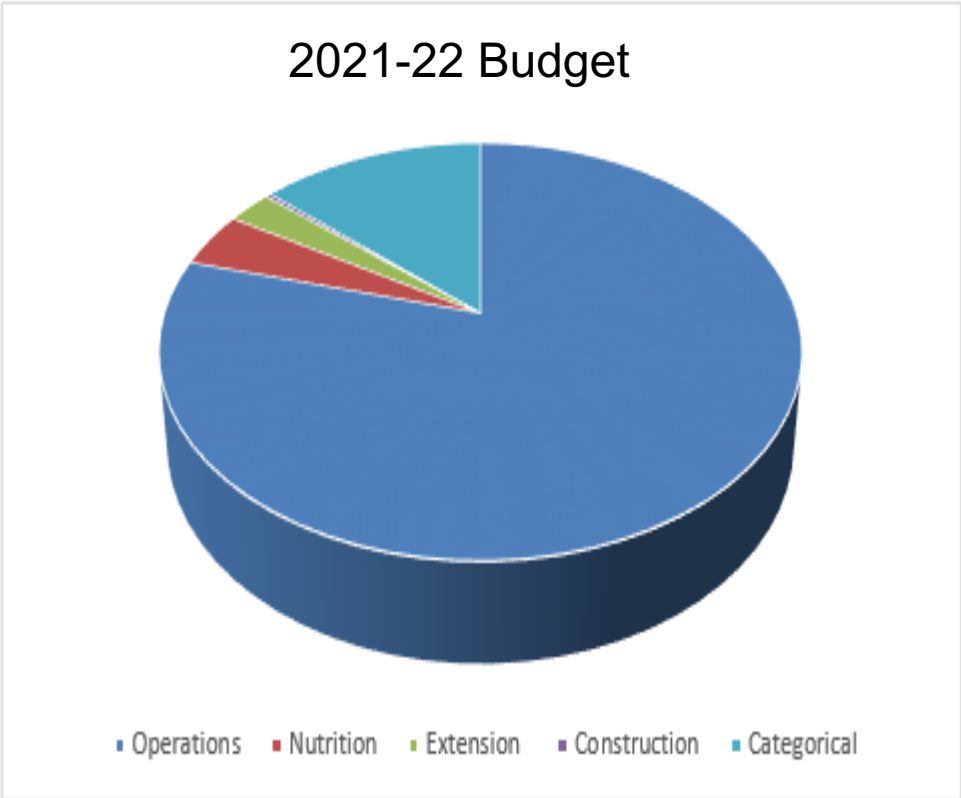


MILWAUKEE  
PUBLIC SCHOOLS

# Five Priorities for Success

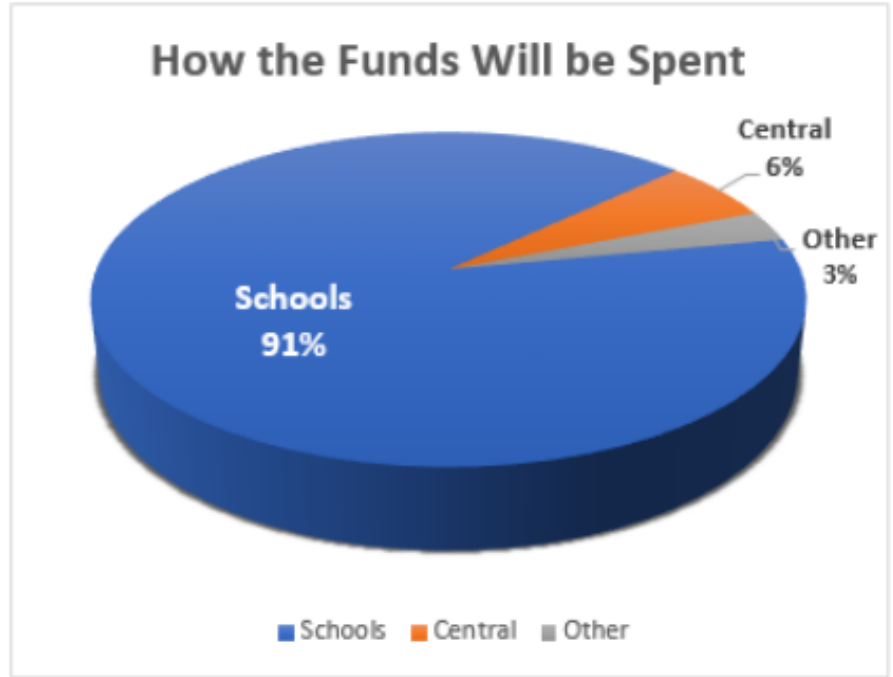


# All Funds Revenue Overview 2021-22



# Directing Funding to Support Schools

For every dollar budgeted in the School Operations Fund, ninety-one cents is used to educate and support MPS students



# Elementary and Secondary School Emergency Relief (ESSER) Programs

Information Category	ESSER I	ESSER II	ESSER III
Stimulus bill	Coronavirus Aid, Relief, and Economic Security Act (CARES Act)	Coronavirus Response and Relief Supplemental Appropriations Act (CRRSAA)	American Rescue Plan Act (ARPA)
Performance period	3/13/2020 – 9/30/2022	3/13/2020 – 9/30/2023	3/13/2020 – 9/30/2024
Total amount in grants to Milwaukee Public Schools	\$41 million	\$225 million	\$506 million – Districts must reserve 20% to mitigate learning loss
School districts provide private school services	Yes; \$15 million	N/A	N/A



## History of Revenue Limit Adjustments to Base Revenue

<u>Year</u>	<u>Per Pupil Revenue Limit Adjustment</u>	<u>Per Pupil % Change</u>
<b>1993-94</b>	\$190.00 or CPI, whichever was greater	----
<b>1994-95</b>	\$194.37 or CPI, whichever was greater	2.3%
<b>1995-96</b>	\$200.00	2.9%
<b>1996-97</b>	\$206.00	3.0%
<b>1997-98</b>	\$206.00	0.0%
<b>1998-99</b>	\$208.88	1.4%
<b>1999-00</b>	\$212.43	1.7%
<b>2000-01</b>	\$220.29	3.7%
<b>2001-02</b>	\$226.68	2.9%
<b>2002-03</b>	\$230.08	1.5%
<b>2003-04</b>	\$236.98	3.0%
<b>2004-05</b>	\$241.01	1.7%
<b>2005-06</b>	\$248.48	3.1%
<b>2006-07</b>	\$256.93	3.4%
<b>2007-08</b>	\$264.12	2.8%
<b>2008-09</b>	\$274.68	4.0%
<b>2009-10</b>	\$200.00	-27.2%
<b>2010-11</b>	\$200.00	0.0%



## History of Revenue Limit Adjustments to Base Revenue

<u>Year</u>	<u>Per Pupil Revenue Limit Adjustment</u>	<u>Per Pupil % Change</u>
<b>2011-12*</b>	-\$528.81	-5.5%
<b>2012-13</b>	\$50.00	*
<b>2013-14</b>	\$75.00	50.0%
<b>2014-15</b>	\$75.00	0.0%
<b>2015-16</b>	\$0.00	-100.0%
<b>2016-17</b>	\$0.00	0.0%
<b>2017-18</b>	\$0.00	0.0%
<b>2018-19</b>	\$0.00	0.0%
<b>2019-20</b>	\$175.00	100.0%

\*For the 2011-12 year, all districts had their base revenue limit per member reduced by 5.5%.

The Per Pupil Change shown here is the statewide average for 2011-12.

Source: Wisconsin Department of Instruction



# Per-pupil Revenue Limit Increase

## History Milwaukee Public Schools

<b>REVENUE LIMIT FORMULA:</b>							
<b>2004-05 TO 2010-11</b>	<b><u>2004-05</u></b>	<b><u>2005-06</u></b>	<b><u>2006-07</u></b>	<b><u>2007-08</u></b>	<b><u>2008-09</u></b>	<b><u>2009-10</u></b>	<b><u>2010-11</u></b>
Base Revenue Per Member	8,042	8,296	8,576	8,877	9,187	9,527	9,813
Per-Member Increase	241	248	257	264	275	200	200
Maximum Revenue Per Member	8,283	8,545	8,833	9,141	9,462	9,727	10,013





# Per-pupil Revenue Limit Increase

## History: Milwaukee Public Schools

SURVEY OF REVENUE LIMIT										
FORMULA: 2011-12 TO 2020-21	<u>2011-12</u>	<u>2012-13</u>	<u>2013-14</u>	<u>2014-15</u>	<u>2015-16</u>	<u>2016-17</u>	<u>2017-18</u>	<u>2018-19</u>	<u>2019-20</u>	<u>2020-21</u>
Base Revenue Per Member	10,104	9,639	9,792	9,945	10,122	10,122	10,122	10,122	10,122	10,297
Per-Member Increase	-556	50	75	75	0	0	0	0	175	179
Maximum Revenue Per Member	9,548	9,689	9,867	10,020	10,122	10,122	10,122	10,122	10,297	10,476



# Revenue Limit: What it could have been

Comparison of Actual Per Pupil and a One Percent Increase Annually							
	Increase to per pupil	Actual Revenue limit (no exemptions)	Actual Per Pupil	# of Pupils Three Year Average	Increased by 1%	Updated Revenue Limit	Difference Actual compared to Updated
2010-11			\$ 10,012.60	85,448			
2011-12	1%	\$ 802,356,936	9,547.89	84,035	\$ 10,112.73	\$ 849,822,929	\$ 47,465,993
2012-13	1%	803,498,514	9,689.11	82,928	10,213.85	847,014,423	43,515,909
2013-14	1%	812,030,000	9,866.99	82,082	10,315.99	846,757,238	34,727,238
2014-15	1%	816,325,363	10,020.24	81,231	10,419.15	846,358,113	30,032,750
2015-16	1%	822,229,412	10,122.11	80,033	10,523.34	842,214,729	19,985,317
2016-17	1%	810,102,830	10,122.11	78,991	10,628.58	839,561,899	29,459,069
2017-18	1%	799,555,591	10,121.73	77,801	10,734.86	835,183,032	35,627,441
2018-19	1%	787,480,716	10,121.73	76,871	10,842.21	833,451,606	45,970,890
2019-20	1%	778,092,996	10,296.73	75,567	10,950.63	827,506,496	49,413,500
2020-21	1%	778,092,997	10,475.73	74,236	11,060.14	821,060,515	42,967,518
						<b>Total change</b>	<b>\$ 379,165,625</b>



# ESSER I Spending

ESSER I Spending	
Description	Amount
Professional development	\$ 14,635
COVID testing	215,522
COVID information for families and staff	7,264
Personal protective equipment (PPE) and sanitizing	3,463,512
Facilities- Air quality	3,853,537
Technology	24,681,721
Indirect Cost	4,266,797
Contracted Schools	4,862,676
	<b>\$ 41,365,663</b>



Proposed ESSER Funding	ESSER II	ESSER III	Total
<b>Accelerating Learning</b>			
Direct Services	\$11,112,841	\$12,646,200	\$23,759,041
High Quality Materials	\$44,552,208	\$9,093,240	\$53,645,448
Professional Development	\$8,257,855	\$9,706,538	\$17,964,393
<b>Total Accelerating Learning</b>	<b>\$63,922,904</b>	<b>\$31,445,978</b>	<b>\$95,368,882</b>
<b>Health and Wellness</b>			
Mental Health	\$7,902,048	\$13,584,674	\$21,486,722
COVID-19 and Health Related	\$2,447,035	\$10,010,210	\$12,457,245
Social Emotional Learning	\$10,561,833	\$9,867,096	\$20,428,929
Physical Education and Experiential Learning	\$3,631,038	\$2,115,315	\$5,746,353
<b>Total Health and Wellness</b>	<b>\$24,541,954</b>	<b>\$35,577,295</b>	<b>\$60,119,249</b>
<b>Facilities</b>			
Air Quality	\$108,174,720	\$75,419,440	\$183,594,160
Plumbing	\$0	\$5,500,000	\$5,500,000
Electrical	\$890,000	\$707,000	\$1,597,000
Interior	\$0	\$8,520,000	\$8,520,000
<b>Total Facilities</b>	<b>\$109,064,720</b>	<b>\$90,146,440</b>	<b>\$199,211,160</b>
<b>Other Educational Services and Programs</b>			
Other Educational Services and Programs	\$27,683,823		\$27,683,823
<b>Grand Total</b>	<b>\$225,213,399</b>	<b>\$157,169,713</b>	<b>\$382,383,112</b>

# ESSER III Plan Development

## Proposed Priority Areas

- Accelerating Learning
- Health and Wellness
- Facilities
- Technology
- Clubs, activities and student safety nets



# ESSER III Plan Development

## Planning Team

- District administrators
- School leaders
- Teachers
- Parents/guardians



# ESSER III Plan Development

## Consultation: Gather input from stakeholders

- Students
- Families
- District administrators
- School leaders
- Educators
- Unions
- Tribes
- Civil rights organizations
- Stakeholders representing the interests of children



# ESSER III Plan Development

## More Information and Input

- <http://mpsmke.com/esser>
- [esser@milwaukee.k12.wi.us](mailto:esser@milwaukee.k12.wi.us)
- Stakeholder Series
- Milwaukee Board of School Director meetings





# Thank you.



Dr. Keith P. Posley, *Superintendent*

© 2021 Milwaukee Public Schools • 17