



**MILWAUKEE
PUBLIC SCHOOLS**

East Region Showcase

November 14, 2024

**Eduardo Galván
Interim Superintendent**



MILWAUKEE
PUBLIC SCHOOLS

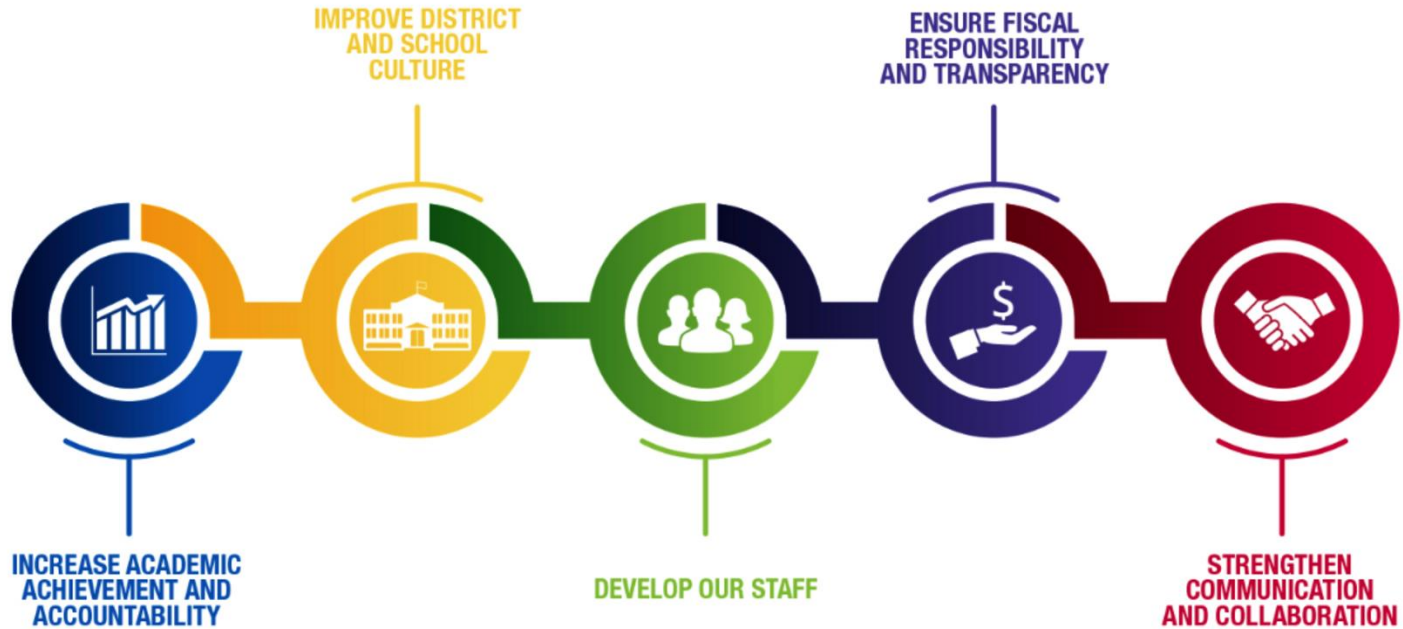
East Region Showcase

Presenters

Miguel Sanchez,
Regional Superintendent

Tiffany Fisher,
Principal,
Roosevelt School of the Arts

Five Priorities for Success



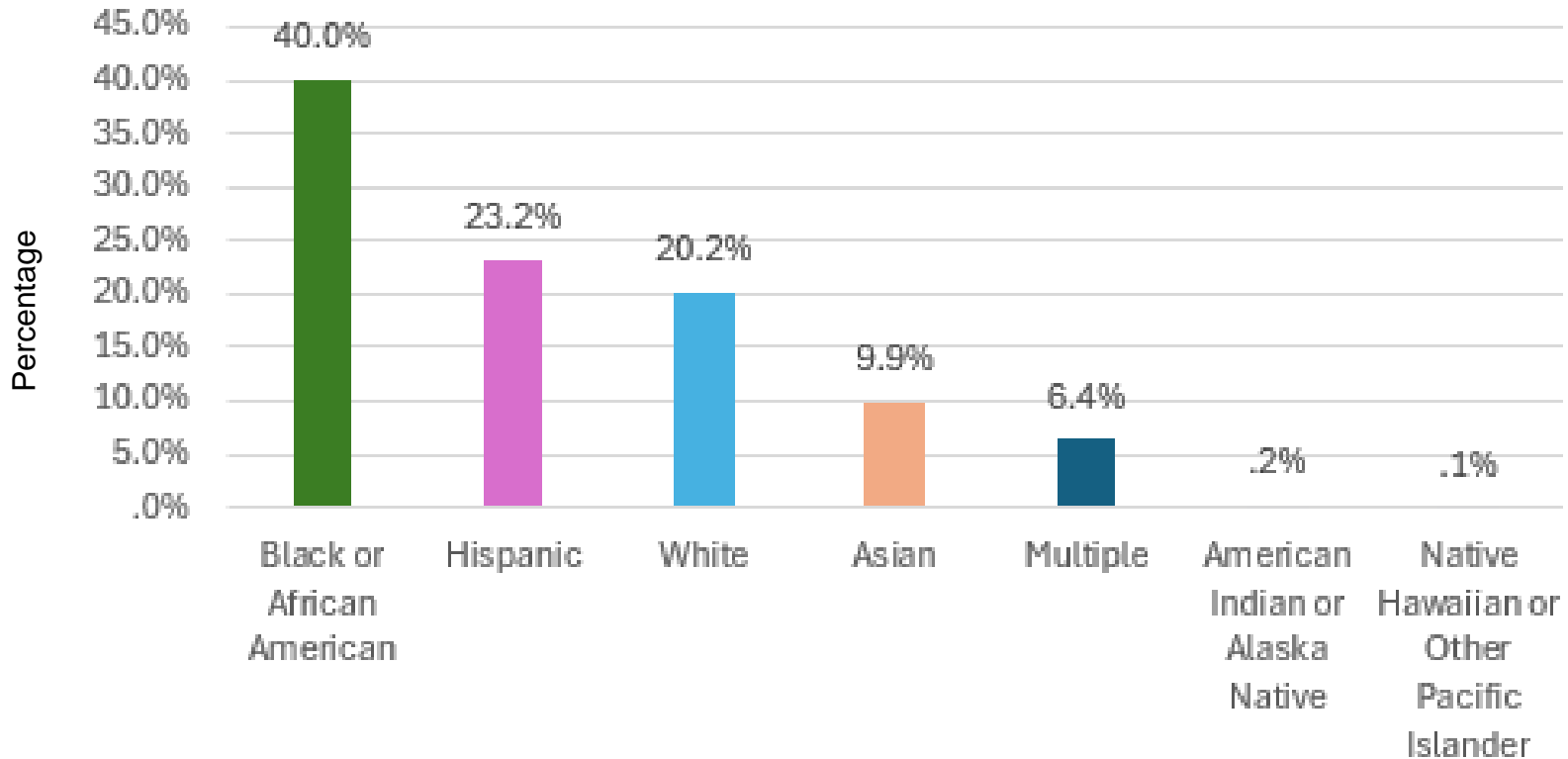
Strategic Plan Driving Our Mission



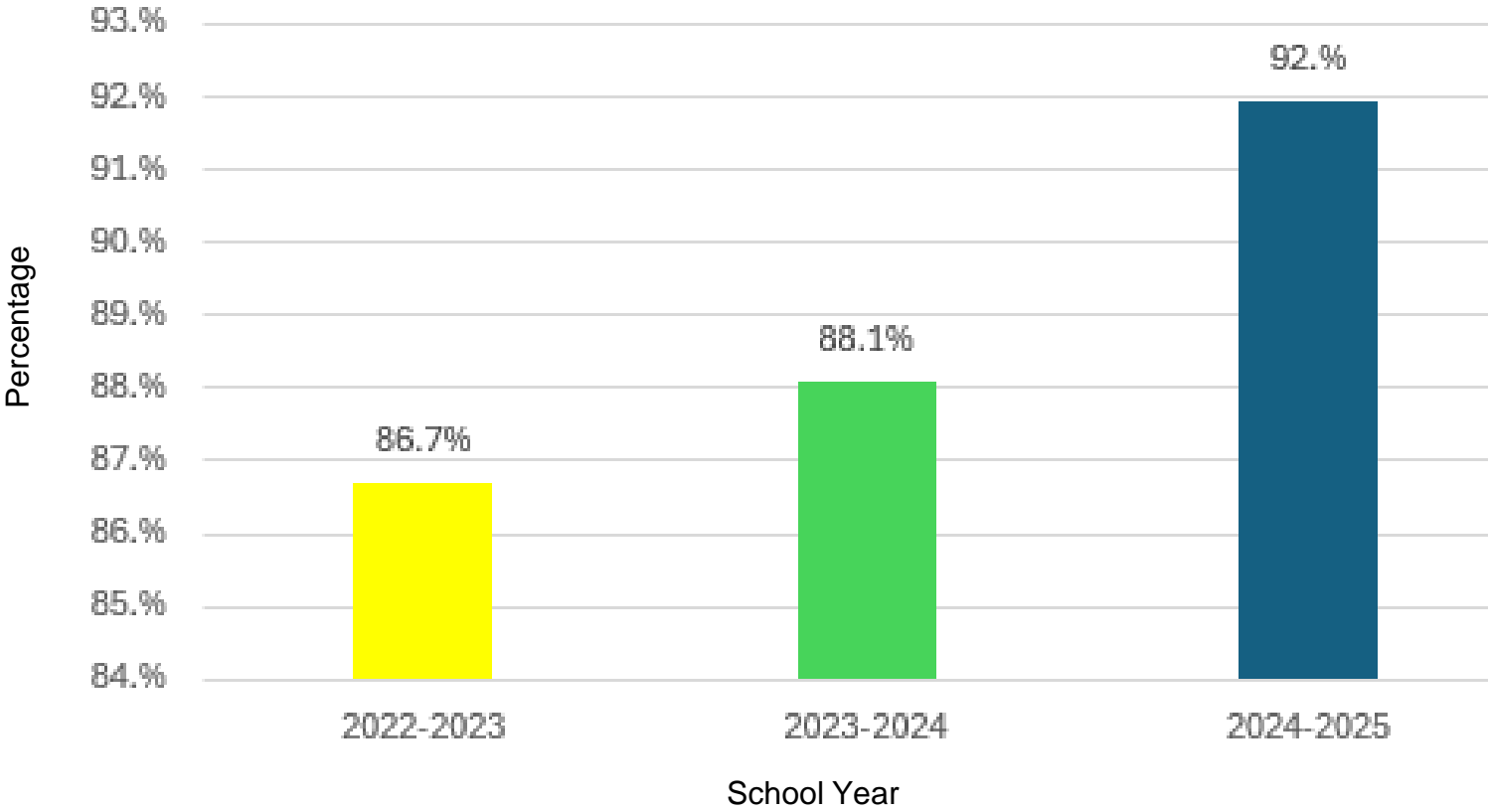
Strategic Plan Driving Our Mission:

MPS is a diverse district that welcomes all students and prepares them for success in higher education, post-education opportunities, work, and citizenship.

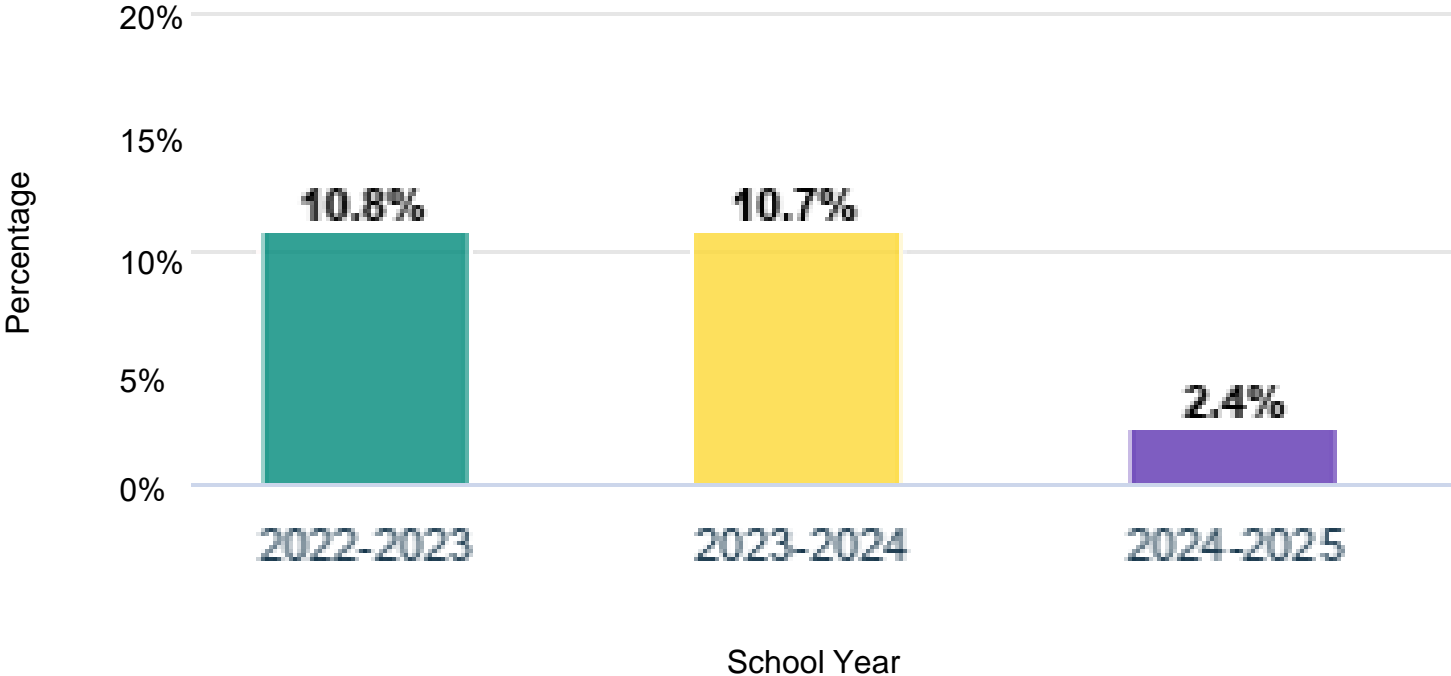
East Region Demographics



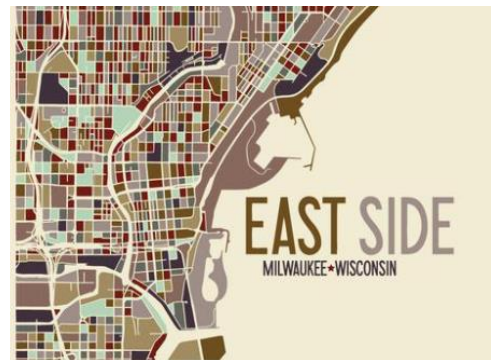
East Region Attendance Comparison



East Region Suspensions Comparison



East Region



SCHOOL SPECIALTY	EAST REGION SCHOOLS	
Montessori	Bay View Craig Fernwood Maryland	
Dual Language/Immersion/Bilingual/ESL	La Escuela Fratney Lincoln Center of the Arts Milwaukee Academy of Chinese Language Parkside Victory	
International Baccalaureate	King Middle	
Arts Integration	Elm Lincoln Center of the Arts Parkside Roosevelt	
Community Schools	Dr. King Jr. O.W. Holmes	
Traditional Schools	Burdick Carver Cass St Clement Gaenslen Garland	Hartford Humboldt I.D.E.A.L. Riverwest Trowbridge

- 10,839 students YTD
 - ✓ Increase of 459 students from 3rd Friday
 - ✓ 2,180 Special Education Students
 - ✓ 1,496 English Language Learners

Roosevelt Middle School of the Arts

Demographics

- 6th – 8th Grade Traditional MS/Arts School
- Enrollment: 290 w/309 Served
- Enrollment is 65 over Projected Enrollment
- 16.0% SwD and 88.4% Econ Disadvantaged
- Race Breakdown:
 - 85.1% Black or African American
 - 7.3% Hispanic
 - 4.0% Multiple
 - 2.3% White
 - 1.3% Asian

Data Spotlight

- 87.0% YTD Attendance Rate (3.1% Increase LYTD)
- 11% Suspension Rate (11.5% Decrease LYTD)



Roosevelt Middle School of the Arts Points of Pride

- Kennedy Center for the Performing Arts: Turnaround Arts
- Arts Leadership Team and Schoolwide Arts Strategy
- 39th Annual Dinner Theater (Historical) and School Musical
- Arts Programming through arts partners allowing for matching
- Washington DC: Student Showcase 23-24 (including staff)
- Recruitment Efforts (5 school visits for a day -200 students)
- 7 Restorative Circles with Families to date
- Summer CSI Teacher Academy (EBIS, Literacy, Sketch noting, HMH Rep, Math)
- From HERO to DOJO- PBIS the middle school way!
- Athletics: Flag Football, Basketball, Volleyball, Track, Soccer
- ESSER: Auditorium Refresh, Outside classroom, Inside classrooms
- Amnesty Day



Community Partners



Ko-Thi Dance Company

Come Home to the Heart

Roosevelt School Improvement Plan At a Glance

ROOSEVELT EBIS @A GLANCE

VISION AND MISSION: WE AIM TO VALIDATE THE EXPERIENCE OF ALL STUDENTS THROUGH THE ARTS!



INSTRUCTIONAL

- Staff will use MPS Pacing guides to make sure students engage with standards/timeline
- High Quality teaching and Learning
- Check for understanding tools frequently
- Student conversations
- Differentiation
- Instructional Design



CLIMATE

- Second Step
- Restorative Practices
- Accountability Systems-Walkthroughs
- Tier 1 systems (routines and procedures)
- PBIS rewards and cool tools



ARTS

- Visual thinking Strategies into core
- Increase schoolwide arts integration in classes
- Strengthen art partners-nationally and locally



SCHOOL AND COMMUNITY ENGAGEMENT

- Increase Parental involvement
- Increase volunteers
- Strengthen Community Partners
- Attendance challenge
- Boost parent understanding of curriculum

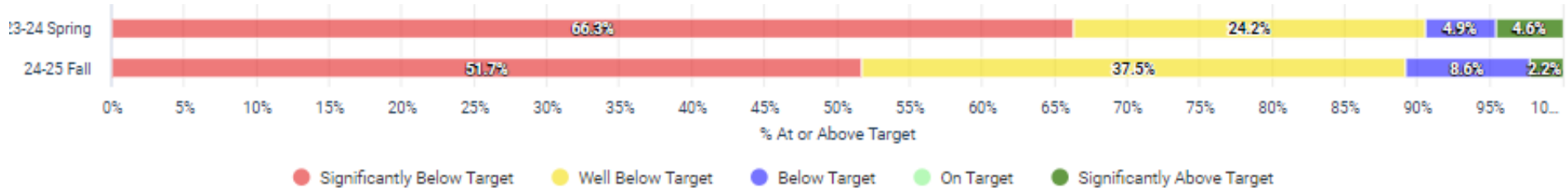
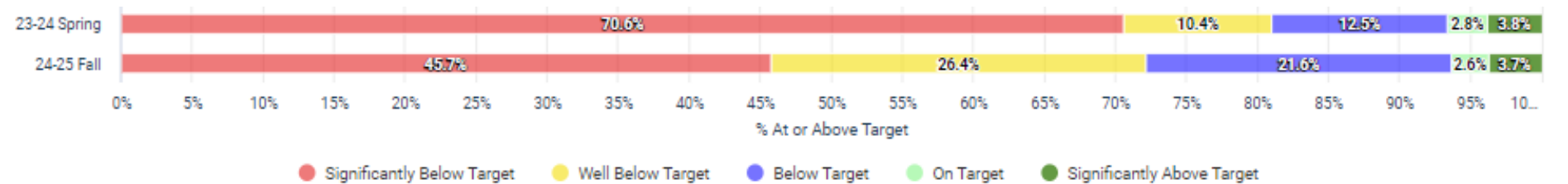


DEVELOPING STAFF

- Engage staff in a PD cycle (including coaching and modeling and district support).
- Differentiate Professional Development for new teachers and veteran teachers based on data and observations.

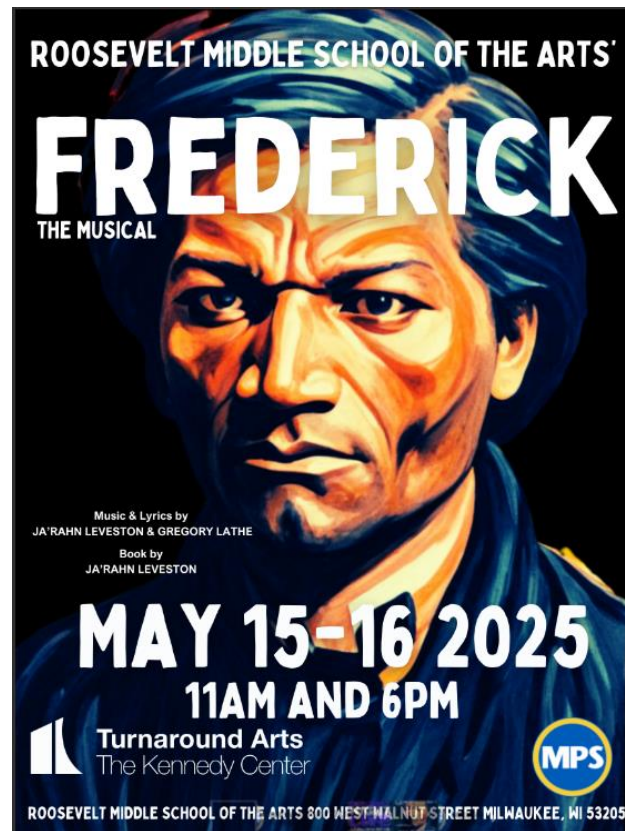
WE value: individuality, competitive learning experience, history, arts and culture and parent and student voice!

Roosevelt STAR Reading and Math Screener Trends



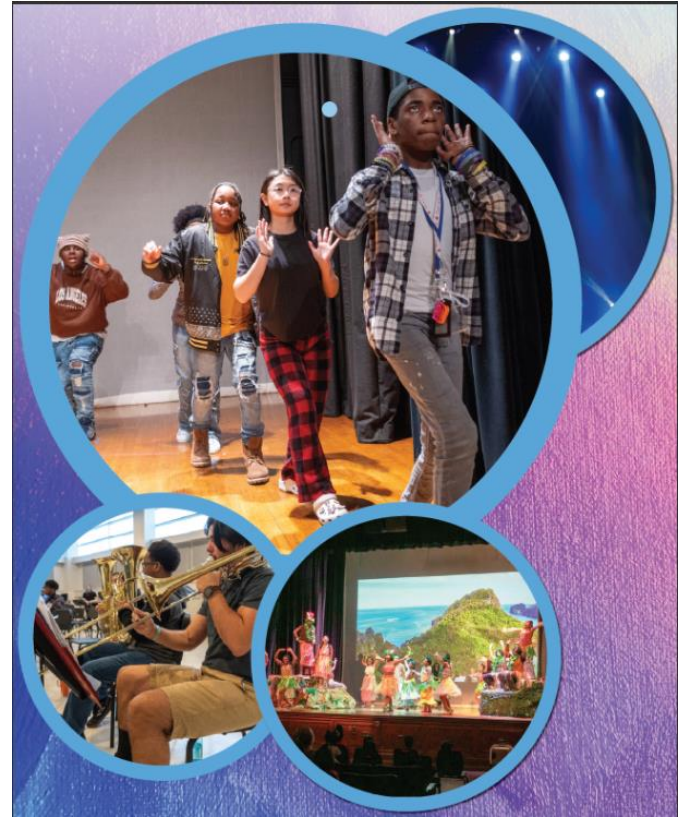
This Year's School Musical is Frederick

Kennedy Center Turnaround Arts Schools create strategic art plans to impact school culture and climate. School events and whole school projects like these sustain opportunities for children to enjoy the educational and restorative value of arts-centric learning experiences.



Student Testimonials

- Messiah Gooden
- Savannah Rhodes





MILWAUKEE
PUBLIC SCHOOLS

Vinaka Maake Asante Shukria Dhanyavadagalu
 감사합니다 Dank Je Dankscheen Kiosonon Kaitos
 Kam Sah Hammida ار كيش Manana Dankon :
 Blagodaram Ngiyabonga Dziakuje Mauruuru Biyan
 Chokrane Diolch i Chi Terima Kasih Matondo
 Juspaxar Arigato Grazie Tack
 Bedankt Dakujem Gracias Mochchakkeram
 धन्यवाद cam ơn ban Khap Paldies Tingki
 Ua Tsaug Rau Koj Grazas Gratias Tibi
 Dėkuji Nirringrazziak Hvala Obrigado
 Suksamat Rahmat Matur Nuwun 谢 谢
 Misaotra Xbala Welalin Di Ou Mesi Kia Ora
 Kop Khun Khap Djiere Dieuf Eskerrik Asko
 Merci Go Raibh Maith Agat Tuke
 Salamat ขอบขอบคุณ