

# Milwaukee High School of the Arts— Regional Showcase

January 14, 2020



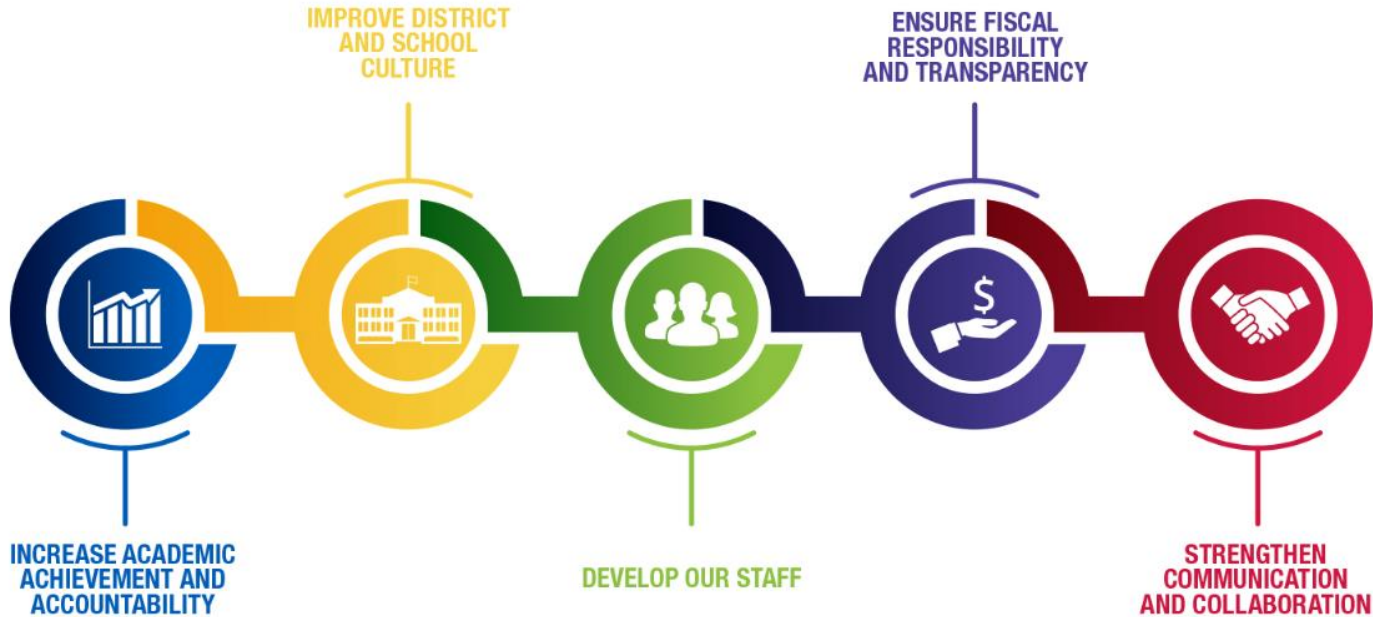
**MILWAUKEE**  
PUBLIC SCHOOLS

**Presenters:** Jennifer Smith, Ed.D., Regional Superintendent  
Larry Farris, Principal

Dr. Keith P. Posley  
*Superintendent of Schools*

# 5 Priorities for Success

---

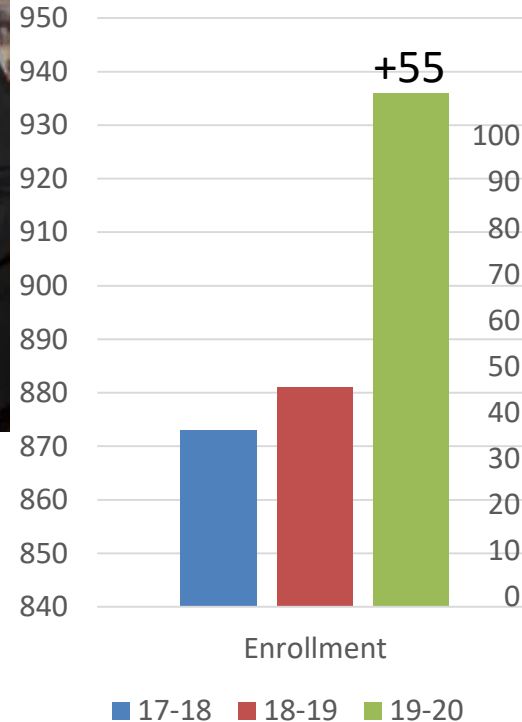


# School Data

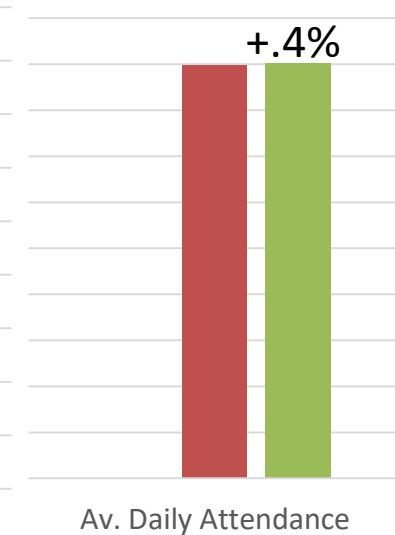


- English Learner population- 12.5%
- Students with disabilities-20%
- Economically disadvantaged – 75%

## Enrollment



## Attendance



# Points of Pride

## Creating a community

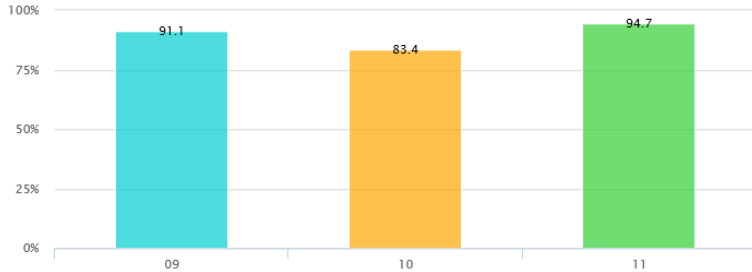
May to Sept Stability    Sept to Sept Stability

89.8%

84.7%

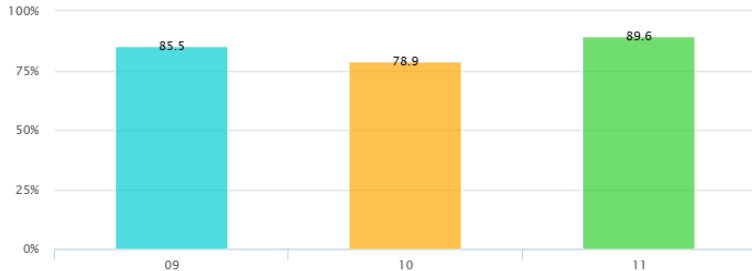
May to Sept Stability by Grade - 2018-2019 to 2019-2020

**Stability Rate:** The percentage of students enrolled (excluding the top grade) on the May count date of the first year that are still enrolled on the following year's September count date.

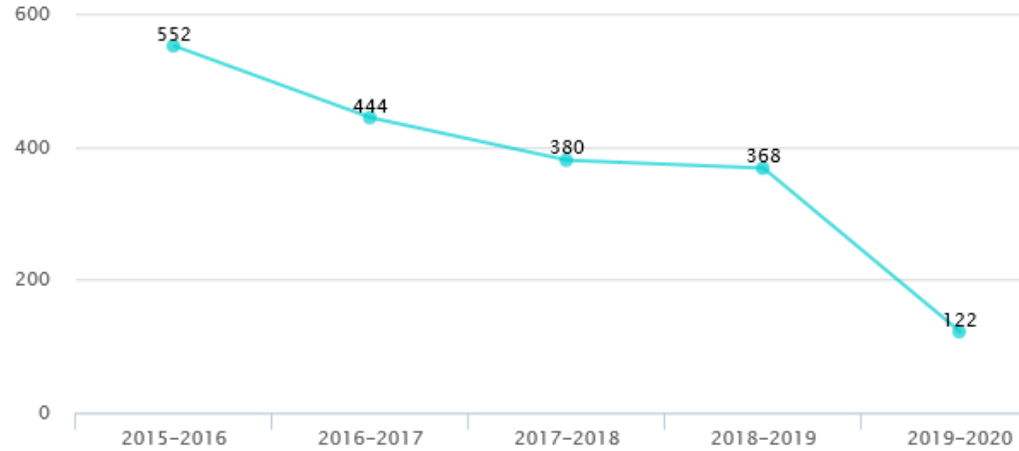


Sept to Sept Stability by Grade - 2018-2019 to 2019-2020

**Stability Rate:** The percentage of students enrolled (excluding the top grade) on the September count date of the first year that are still enrolled on the following year's September count date.



Office Discipline Referrals by Year



# State Report Card Growth

PRELIMINARY - SECURE REPORT - NOT FOR PUBLIC RELEASE October 2nd, 2018

WISCONSIN DEPARTMENT OF PUBLIC INSTRUCTION

**Milwaukee High School of the Arts**  
Milwaukee | Public - All Students  
School Report Card | 2017-18 | Summary



Overall Accountability Ratings	Score
Significantly Exceeds Expectations	83-100
Exceeds Expectations	73-82.9
Meets Expectations	63-72.9
Meets Few Expectations	53-62.9
Fails to Meet Expectations	0-52.9

**School Information**

Grades	9-12
School Type	High School
Enrollment	874
Percent Open Enrollment	2.4%

Race/Ethnicity

American Indian or Alaskan Native	0.8%
Asian	9.5%
Black or African American	60.0%
Hispanic/Latino	17.3%
Native Hawaiian or Other Pacific Islander	0.0%
White	10.9%
Two or More Races	1.6%

Student Groups

Students with Disabilities	20.4%
Economically Disadvantaged	63.0%
English Learners	12.5%

Priority Areas

	School Score	Max Score	9-12 State	9-12 Max
<b>Student Achievement</b>	<b>25.1/100</b>	<b>57.3/100</b>		
English Language Arts (ELA) Achievement	18.4/50	29.8/50		
Mathematics Achievement	6.7/50	27.5/50		

**School Growth**

	NA/NA	NA/NA
English Language Arts (ELA) Growth	NA/NA	NA/NA
Mathematics Growth	NA/NA	NA/NA

**Closing Gaps**

	69.3/100	67.7/100
English Language Arts (ELA) Achievement Gaps	14.6/25	17.4/25
Mathematics Achievement Gaps	16.2/25	17.5/25
Graduation Rate Gaps	38.5/50	32.8/50

**On-Track and Postsecondary Readiness**

	88.1/100	90.5/100
Graduation Rate	88.1/100	90.5/100
Attendance Rate	NA/NA	NA/NA
3rd Grade English Language Arts (ELA) Achievement	NA/NA	NA/NA
8th Grade Mathematics Achievement	NA/NA	NA/NA

**Priority Area Weights**

Priority Area	Percentage Weight
Student Achievement	40.0%
School Growth	NA
Closing Gaps	40.0%
On-Track and Postsecondary Readiness	20.0%

Note: For details about how weights are determined, see weighting calculator: [https://oea-dpi.wisnaps.io/overall\\_weighting\\_calculator/](https://oea-dpi.wisnaps.io/overall_weighting_calculator/)

**Student Engagement Indicators**

Indicator	Total Deductions: -5
Absenteeism Rate (goal <13%)	Goal not met: -5
Dropout Rate (goal <6%)	Goal met: no deduction

**Test Participation Information**

Includes Forward Exam (grades 3-8), ACT (grade 11), and Dynamic Learning Maps (grades 3-8 and 11)

Group	ELA 1-Year	ELA 3-Year	Math 1-Year	Math 3-Year
All-Students Rate	98%	95.9%	97.5%	95.6%
Lowest Subgroup Rate: Hispanic	93.5%	93.5%	93.5%	94.1%

FINAL - SECURE REPORT - NOT FOR PUBLIC RELEASE November 12th, 2019

WISCONSIN DEPARTMENT OF PUBLIC INSTRUCTION

**Milwaukee High School of the Arts**  
Milwaukee | Public - All Students  
School Report Card | 2018-19 | Summary



Overall Accountability Ratings	Score
Significantly Exceeds Expectations	83-100
Exceeds Expectations	73-82.9
Meets Expectations	63-72.9
Meets Few Expectations	53-62.9
Fails to Meet Expectations	0-52.9

**School Information**

Grades	9-12
School Type	High School
Enrollment	884
Percent Open Enrollment	2.4%

Race/Ethnicity

American Indian or Alaskan Native	0.8%
Asian	10.2%
Black or African American	55.9%
Hispanic/Latino	19.1%
Native Hawaiian or Other Pacific Islander	0.0%
White	11.2%
Two or More Races	2.8%

Student Groups

Students with Disabilities	20.6%
Economically Disadvantaged	69.6%
English Learners	12.4%

Priority Areas

	School Score	Max Score	9-12 State	9-12 Max
<b>Student Achievement</b>	<b>22.6/100</b>	<b>59.8/100</b>		
English Language Arts (ELA) Achievement	16.2/50	31.1/50		
Mathematics Achievement	6.4/50	28.7/50		

**School Growth**

	46.1/100	66.0/100
English Language Arts (ELA) Growth	32.1/50	33.0/50
Mathematics Growth	14.0/50	33.0/50

**Closing Gaps**

	69.9/100	67.3/100
English Language Arts (ELA) Achievement Gaps	18.7/25	17.4/25
Mathematics Achievement Gaps	17.1/25	17.2/25
Graduation Rate Gaps	34.1/50	32.7/50

**On-Track and Postsecondary Readiness**

	90.5/100	90.8/100
Graduation Rate	90.5/100	90.8/100
Attendance Rate	NA/NA	NA/NA
3rd Grade English Language Arts (ELA) Achievement	NA/NA	NA/NA
8th Grade Mathematics Achievement	NA/NA	NA/NA

**Priority Area Weights**

Priority Area	Percentage Weight
Student Achievement	5.3%
School Growth	48.0%
Closing Gaps	26.7%
On-Track and Postsecondary Readiness	20.0%

Note: For details about how weights are determined, see weighting calculator: [https://oea-dpi.wisnaps.io/overall\\_weighting\\_calculator/](https://oea-dpi.wisnaps.io/overall_weighting_calculator/)

**Student Engagement Indicators**

Indicator	Total Deductions: -5
Absenteeism Rate (goal <13%)	Goal not met: -5
Dropout Rate (goal <6%)	Goal met: no deduction

**Test Participation Information**

Includes Forward Exam (grades 3-8), ACT Aspire (9 and 10), ACT (11), and Dynamic Learning Maps (3-11)

Group	ELA 1-Year	ELA 3-Year	Math 1-Year	Math 3-Year
All-Students Rate	97.3%	92.9%	97.5%	94.0%
Lowest Subgroup Rate: Two or More	95.7%	97.7%	95.7%	95.3%



# Freshman Academy

---

- **Cohort model to support academic success and social transition**
- **9<sup>th</sup> grade Professional Learning Community with high teacher investment**
- **Saturday academies 8 times per year**
- **Resulted in only two 9<sup>th</sup> grade repeaters in 2019**



# Arts Based Education

---

- **Continuing with the Arts majors in Visual Arts, Music, Dance, Theater and Creative Writing**
- **Arts are in demand for community performances**
- **Strong partnership with Wisconsin Conservatory for Music**



# Unique opportunities for students

---

- Introduction of TEALS program in Computer Science to expand Project Lead the Way (PLTW)
- PLTW connected to Visual Arts major
- English as a Second Language partnership with Milwaukee Academy of Chinese Language.





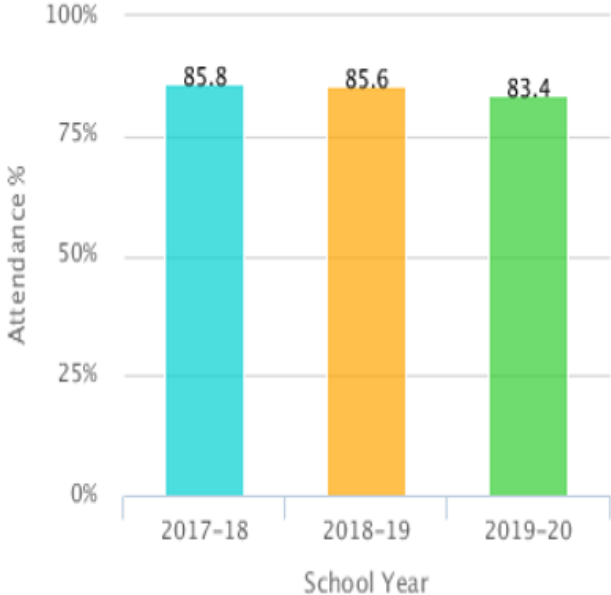
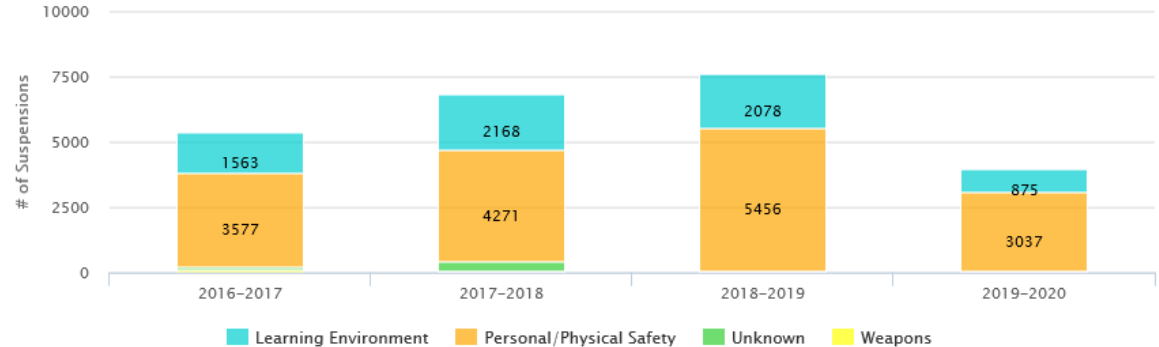
# High School Region – Opportunities for Growth

## Suspensions and Attendance

Suspension Rate Last 4 Years



Suspensions by Year - Full Years and Current Year to Date



# Thank you!

---

