

Gifted Identification and PSAT Data

February 14, 2019



MILWAUKEE
PUBLIC SCHOOLS

Presenter:

Melanie R. Stewart, Ph.D., Director Research, Assessment and Data

Dr. Keith P. Posley, Superintendent

FIVE PRIORITIES FOR SUCCESS

Improve District and School Culture

Ensure Fiscal Responsibility and Transparency



Increase Academic Achievement and Accountability

Develop Our Staff

Strengthen Communication and Collaboration

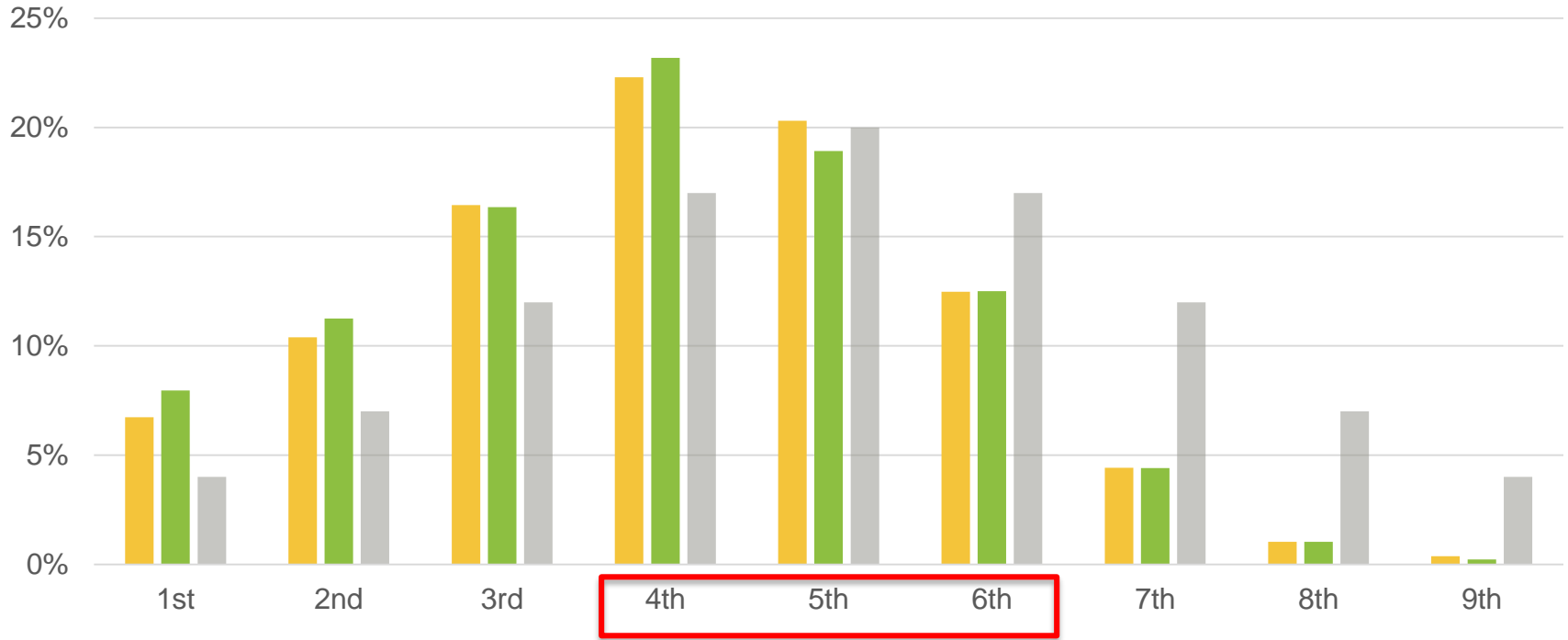


Identification of Gifted & Talented Students

- Milwaukee Public Schools uses a variety of assessments to identify high ability and potential in students
 - Cognitive Abilities Test (CogAT)
 - Teacher Observation of Potential in Students (TOPS)
 - Star

Cognitive Abilities Test Screener - Composite Score

Percent of All Students in Each Stanine



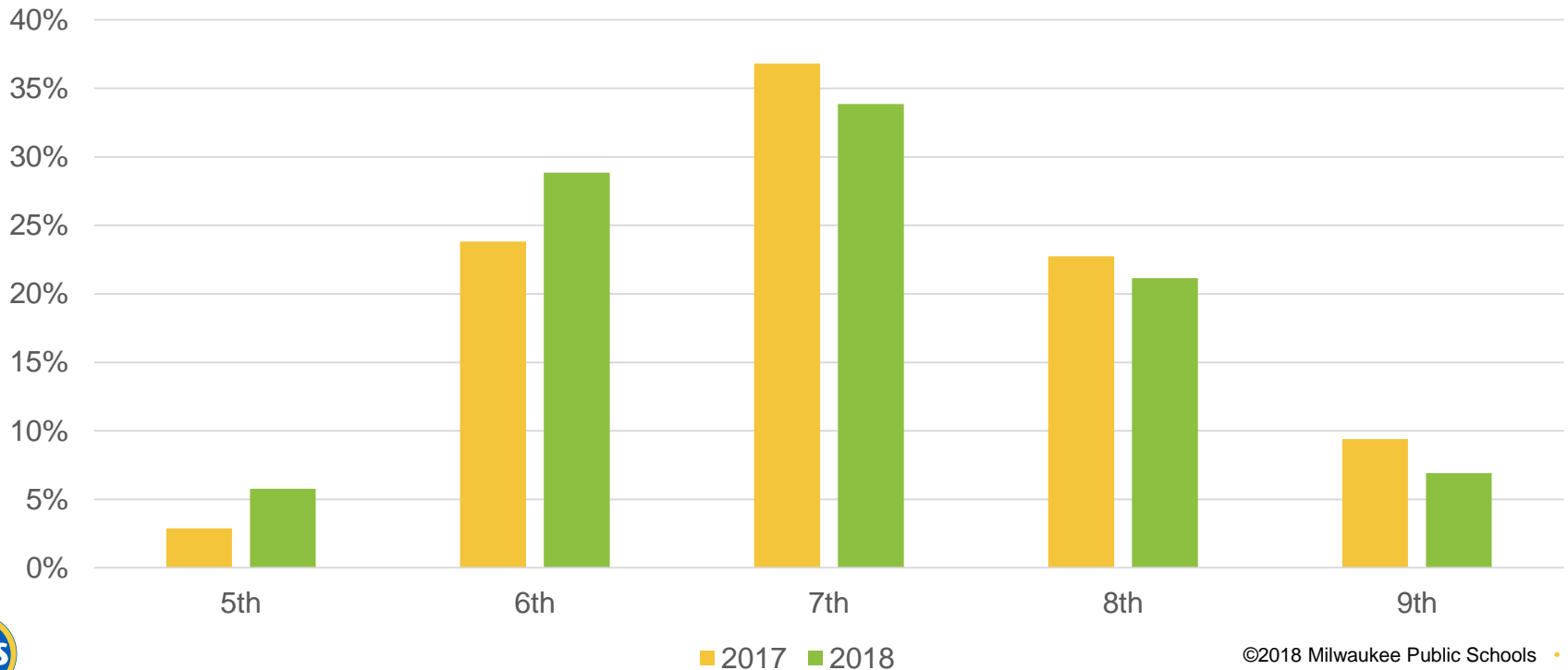
Identified Students from CogAT Screener

- The CogAT Screener identified 268 students that scored in the 7th, 8th or 9th stanine, making them eligible for the Post-Screener.
- Those identified students came from 73 different schools in 2018, compared with 37 schools in 2017.
- 17.5% of students taking the Post-Screener (47) scored in the 9th stanine on at least one section of the assessment.

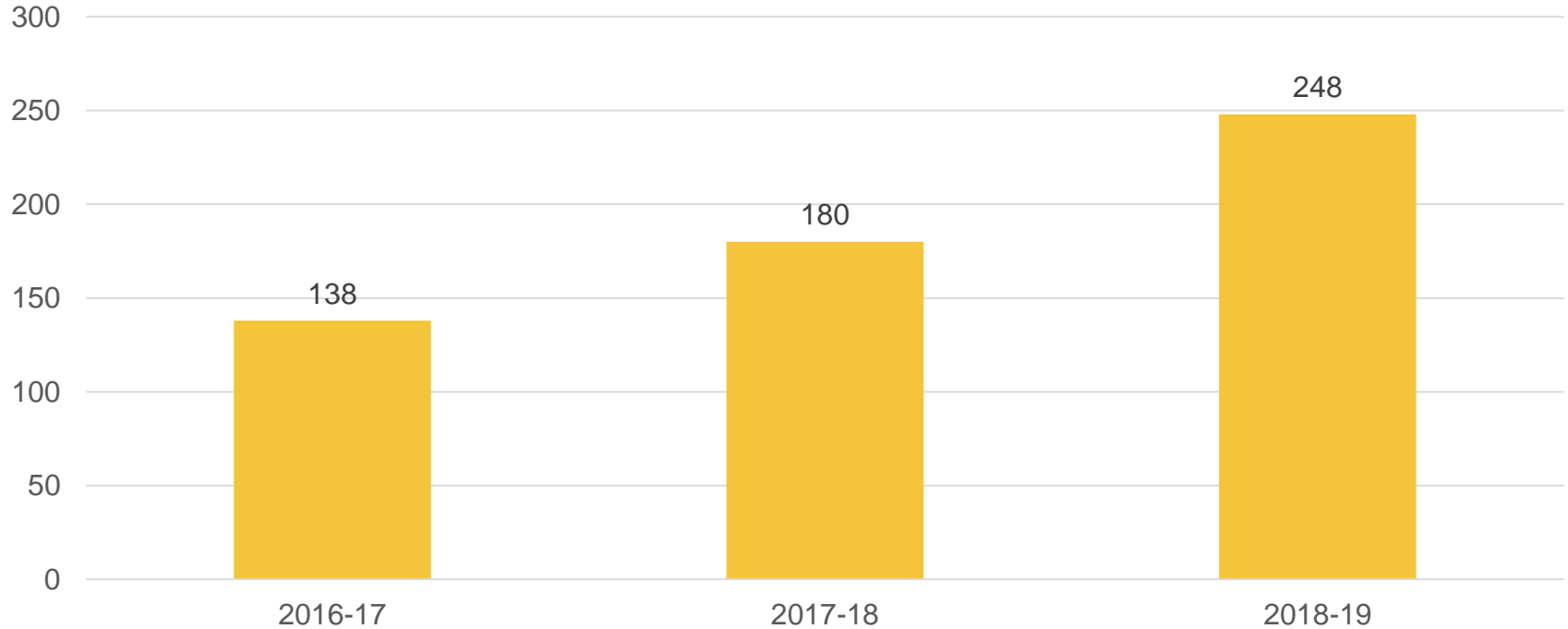


Age Stanine Distribution: Post-Screener Composite Score

Percent of Students in Each Stanine



Identification with TOPS



STAR Data

Additional students are identified for enrichment when they score at or above the 75th Percentile

	Fall 2017	Fall 2018
Early Literacy	1366	1333
Reading	3058	3242
Math	6645	6207

Services for Identified Students

- GT parent listserv
- GT parent “GT 101” professional learning
- Social Emotional Needs of Gifted (SENG) – Parent-led discussion groups
- Saturday and summer GT camps for students in K-7th grade
- New Javits Grant: Scaling Up Expanding Excellence for Underrepresented Students (SEE US!)



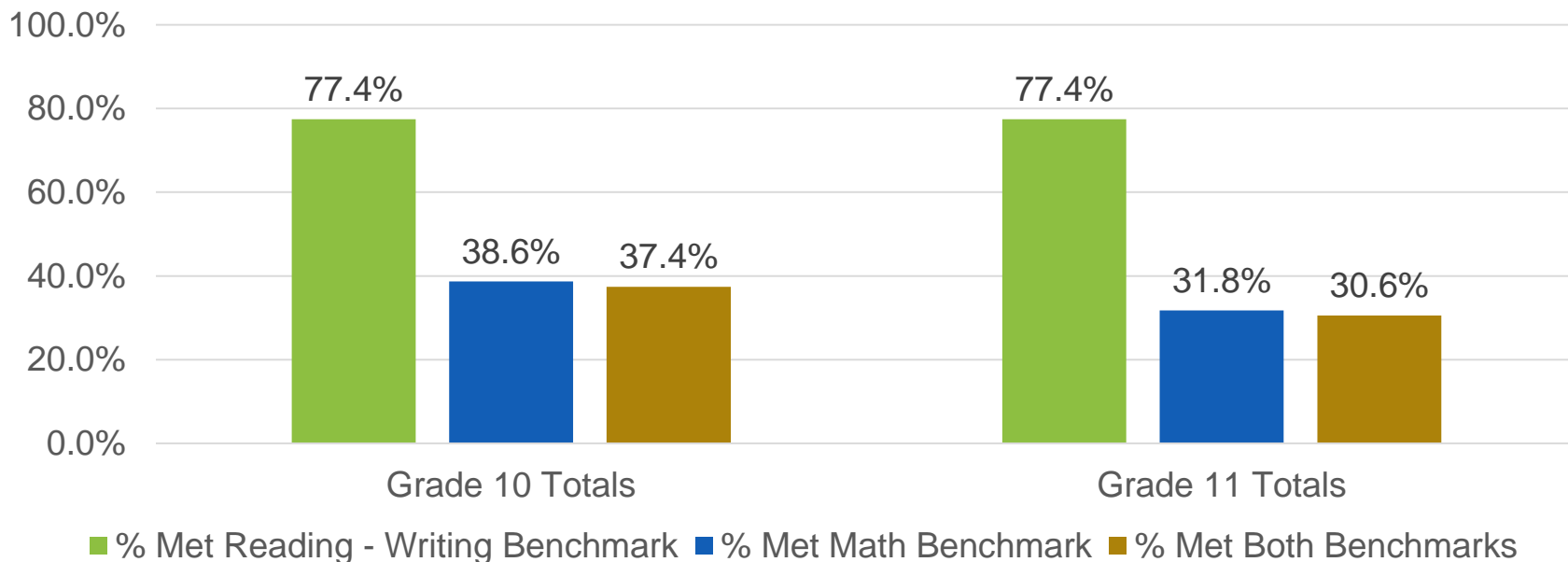
Preliminary SAT/National Merit Scholarship Qualifying Test

The Preliminary SAT/National Merit Scholarship Qualifying Test (PSAT/NMSQT) measures the skills and knowledge that research shows are the most essential for college and career readiness and success.



PSAT/NMSQT Benchmarks

Percentage of Students Meeting Benchmark



PSAT/NMSQT Results

- Used by students to participate in the SAT Practice Project
- Identifies students with AP potential
- Provides students several scholarship opportunities



Thank you

Presenter:

Melanie R. Stewart, Ph.D.



Dr. Keith P. Posley, *Superintendent*