

# Family & Community Engagement Report



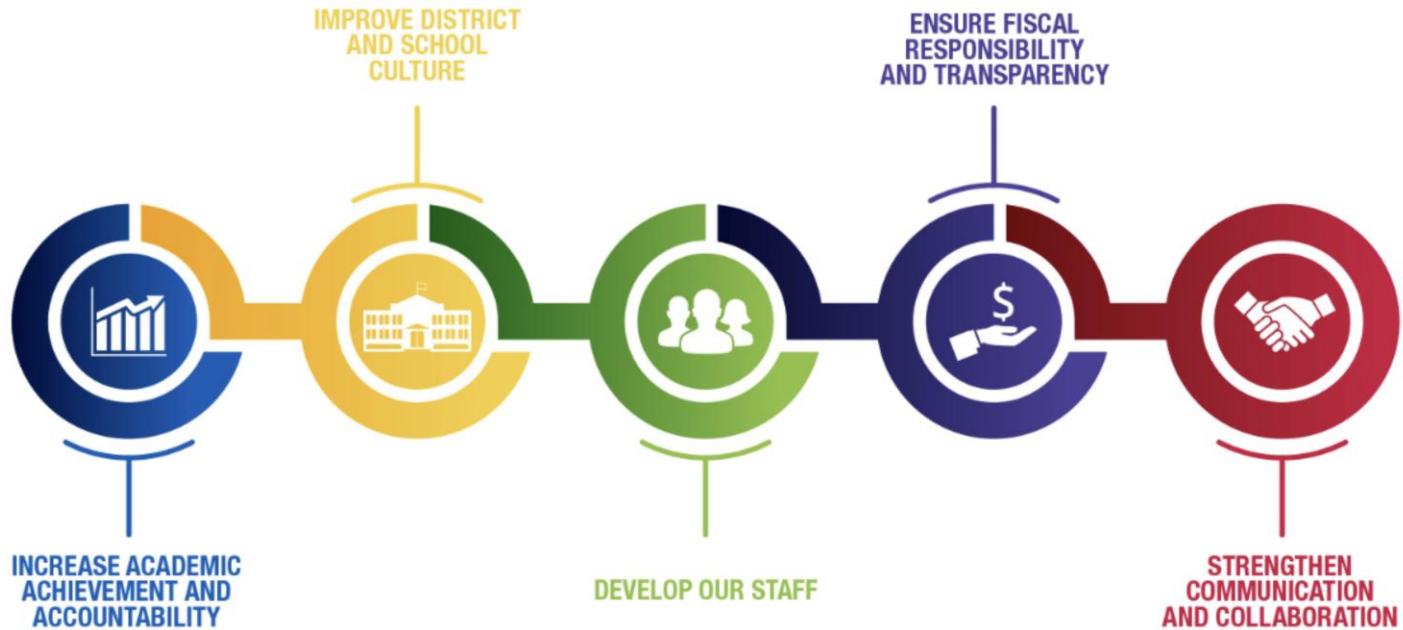
**MILWAUKEE**  
PUBLIC SCHOOLS

**Presenters:**

Christy Stone, Director of Strategic Partnerships and Customer Service  
Darryl Hall, Family and Community Engagement Specialist

Dr. Keith P. Posley, *Superintendent*

# Five Priorities for Success



# Family Engagement



- The Family Engagement Framework aligns with the district's Five Priorities for Success to provide clear direction on our key areas of focus.
- The framework helps to foster healthy school, family, and student relationships to promote student success.
- All schools are working to meet the six standards of the MPS Family & Community Engagement Framework.

# Reflection of 2021-22



- Parent Coordinator Retention
- Professional Development and Coaching
- Family Engagement Events

# Family Engagement Approach



- Parent Coordinator Community of Practice
- Resilient Kidz Training
- Whole-School Approach to Family Engagement
- Sustained Partnerships With Families

# Community Highlights



- District Backpack Giveaway
- Marcus Center Student Matinee Series
- Green Bay Packers Empowerment Event
- James Place Volunteers
- Generac and GE HealthCare

Thank you.



Dr. Keith P. Posley, *Superintendent*

© 2022 Milwaukee Public Schools • 7