



**MILWAUKEE  
PUBLIC SCHOOLS**

# 21<sup>st</sup> Century Community Learning Centers 2020-21 Evaluation Report

January, 2024

Dr. Keith P. Posley  
*Superintendent*



**MILWAUKEE**  
PUBLIC SCHOOLS

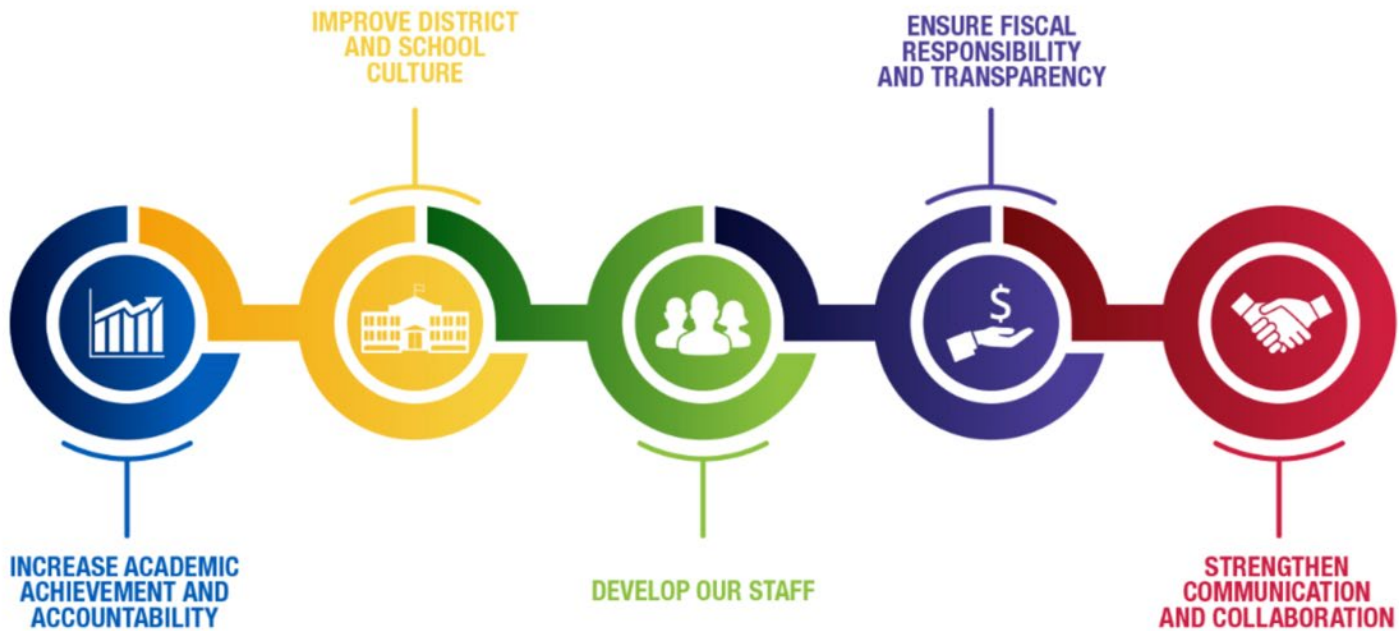
**21<sup>st</sup> Century  
Community Learning  
Centers 2020-21  
Evaluation Report**

*Presenters*

**Leighton Cooper**  
Coordinator-After-School Programs  
Milwaukee Recreation

**Grant Sim**  
Research and Evaluation Scientist  
Wisconsin Center for Education  
Research

# *Five Priorities for Success*



# 21<sup>st</sup> Century Community Learning Center Local Evaluation

**21<sup>st</sup> Century Community Learning Centers are required to track and measure progress toward established objectives in order to inform the following practices:**

- Assess program impact on students and families
- Improve practices and services
- Adapt targets as needed
- Inform the implementation of high-quality programming
- Ensure accountability towards grant program goals and purpose

# 21<sup>st</sup> Century Community Learning Center Local Evaluation

Programs must produce and publish an annual evaluation that demonstrates progress toward the objectives and summarizes the program improvement efforts.

## MPS CCLC Evaluation Distribution:

- Milwaukee Recreation Website ([mkerec.net](http://mkerec.net))
- Community-based organizations share evaluation reports via their stakeholder networks
- Presentation to Milwaukee Board of School Directors



# Evaluation Process - Methodology

Evaluation examines:

- Number of students served
- How often students attended CLC
- Selected student demographics
- Progress on four state CLC goals



# Four State CLC Goals

1. Provide a stable, safe, and supportive environment to meet the needs of the target population.
2. Challenge youth as learners.
3. Support the development of other skills necessary for student success.
4. Engage families in support of student learning.



# Evaluation Process – Data Sources

- CLC site-level goals
- CLC attendance and participation in select activities
- Student and family surveys
- Student demographics
- School attendance
- Disciplinary records (from day school)
- Assessment results





# Evaluation Findings – Students Served

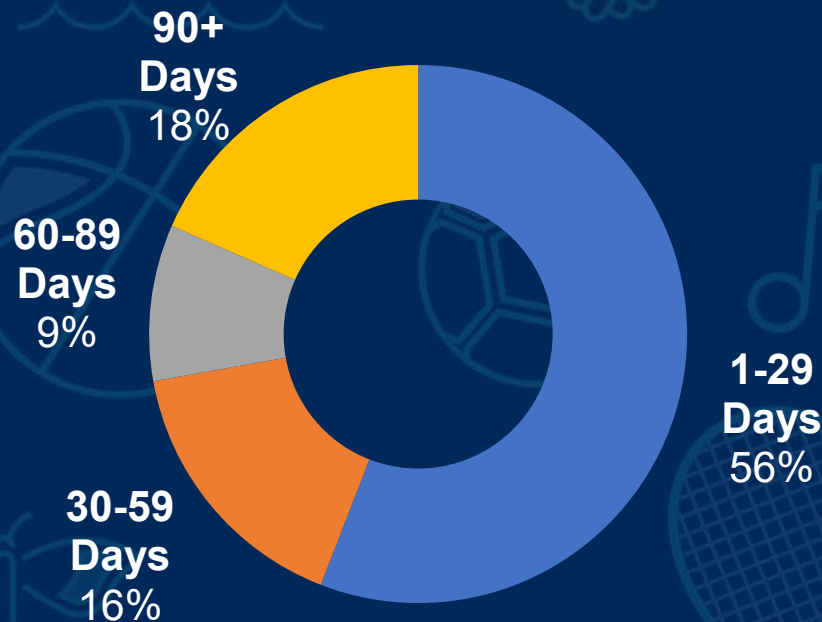
**1,798** Students served

**42** Average student days attended

**30** Average number served per site

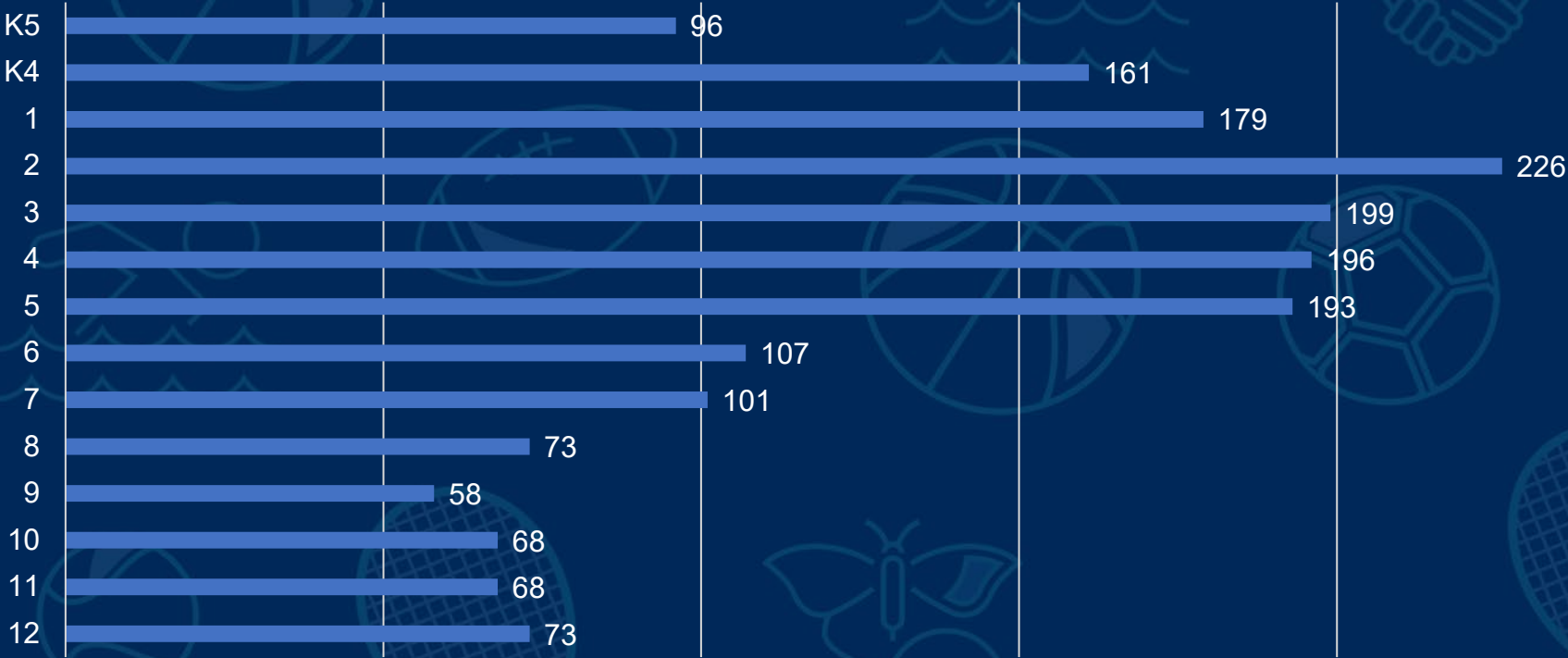
## Distribution of Attendance

2020-21 School Year



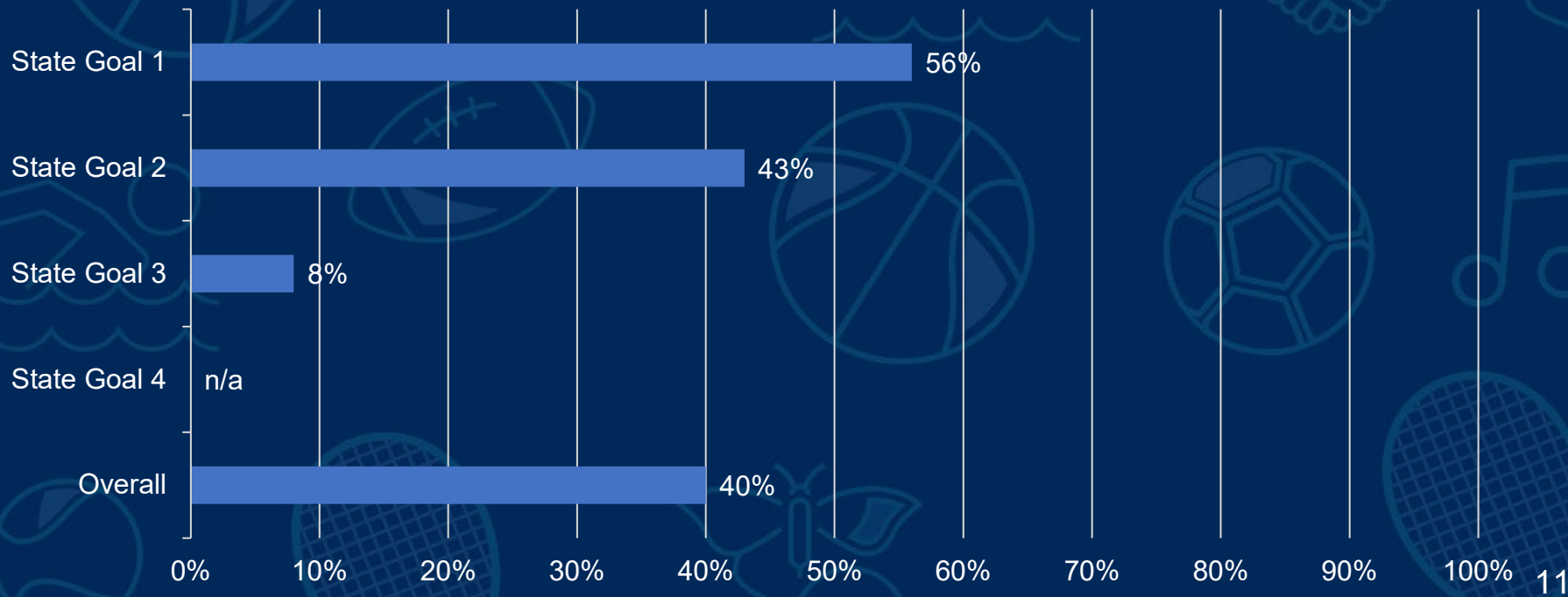
# Evaluation Findings – Student Demographics

## Participation by Grade Level



# Evaluation Findings – Progress Towards Objectives

## Goal Attainment: Percentage of Local Goals Met



# Evaluation Findings – Progress Towards Objectives

Improve local goal-setting:

- Have a better process for reviewing site-level goals.
- Ensure that goals are rigorous yet attainable.
- Have clearly identified and available data sources that can be collected easily.

More goals with data = more reliable evaluation results.

Continue to work with MPS on more robust evaluation.





**MILWAUKEE  
PUBLIC SCHOOLS**

**Thank  
You!**