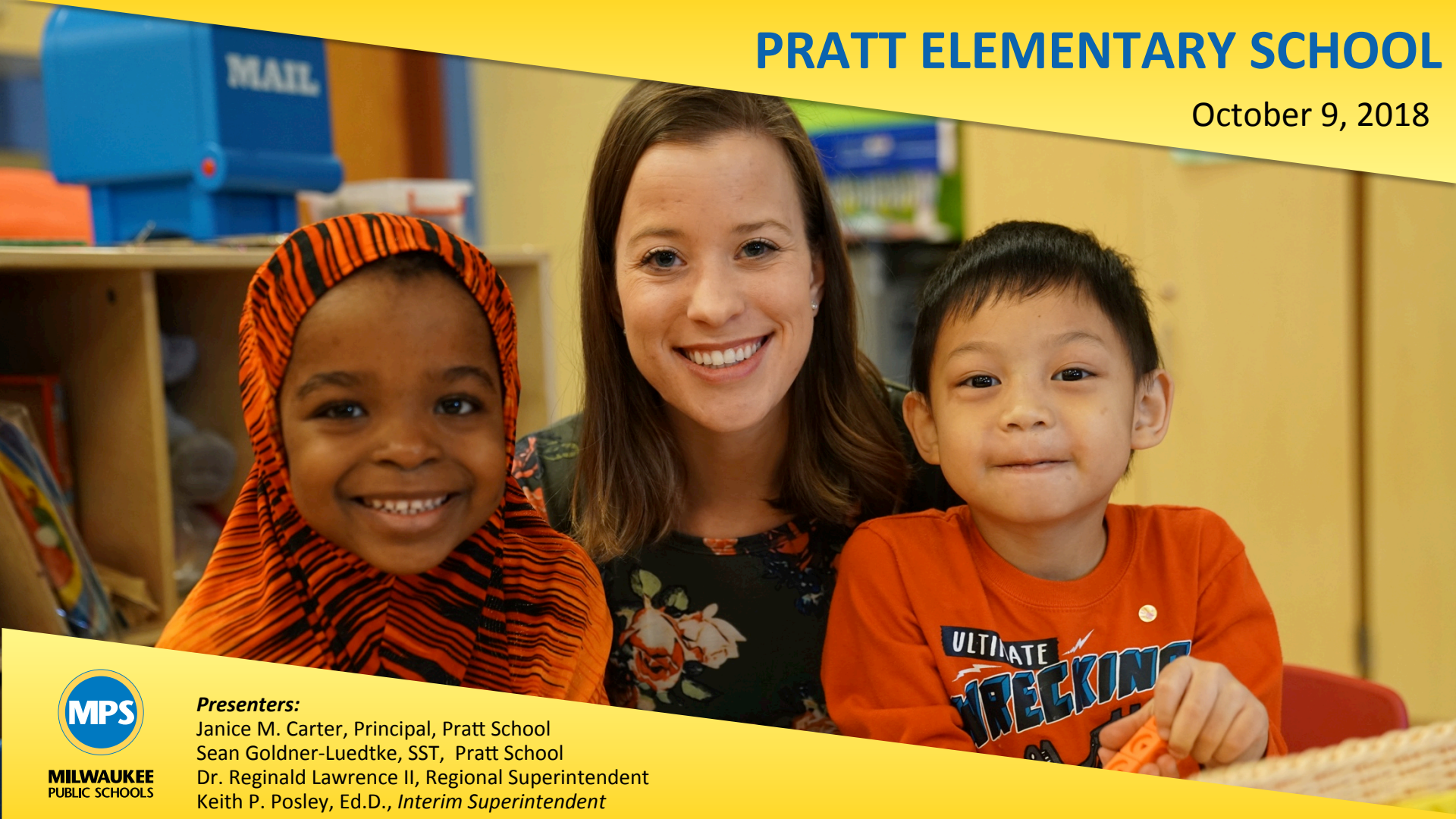


PRATT ELEMENTARY SCHOOL

October 9, 2018



MILWAUKEE
PUBLIC SCHOOLS

Presenters:

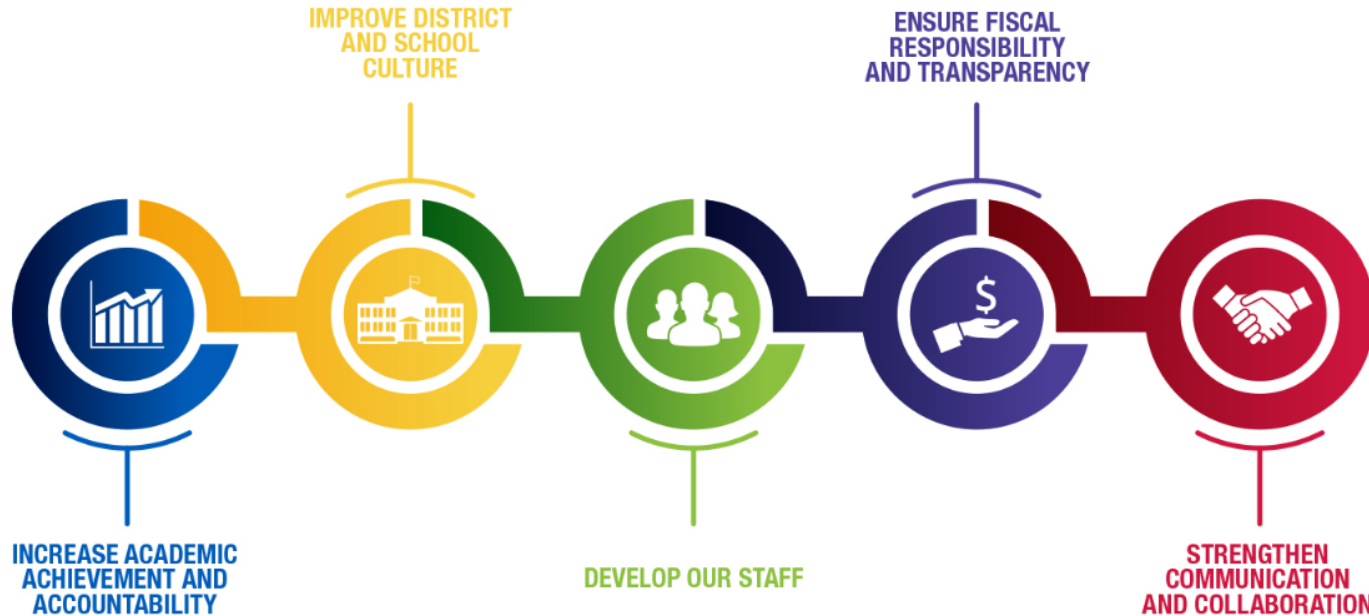
Janice M. Carter, Principal, Pratt School

Sean Goldner-Luedtke, SST, Pratt School

Dr. Reginald Lawrence II, Regional Superintendent

Keith P. Posley, Ed.D., *Interim Superintendent*

5 Priorities for Success



Pratt Elementary School



Pratt Elementary School

Vision

- Pratt School will be among the high performing schools in the state. We provide rigorous, high quality opportunities for students using child centered, research proven methods based on the common core state standards (CCSS) and the Wisconsin Model Early Learning Standards (WMEELS).

Rocket

- Together we will **ROCKET** in improving the academic and social success of ALL students through clear, consistent and effective:
 - Use of **Rigor**
 - Remaining **Objective**
 - Clear **Communication**
 - Being **Knowledgeable**
 - Providing **Evidence**
 - **Teaching for Proficiency**



Pratt School Facilities/Academics Timeline



Facilities

- 2013 – Reviewed and targeted climate – rolled out new building wide Positive Behavior Intervention Strategies (PBIS) initiative/ Universal Expectations
- 2014 – Began school facilities refresh to match climate targets/ computers/Smart boards, painting, office overhaul, change mindset
- 2015 – K5/ 1st grade Achievement Gap Reduction (AGR) classroom refresh matched by 4/5th grade classroom refresh
- 2016 – 2nd/ 3rd grade AGR Refresh/ Whiteboards
- 2017 – Painting of the primary playground
- 2018 – Air Conditioning – Gym/ Office

Academics

- 2013 - Reviewed and targeted climate – rolled out new building wide PBIS initiative/ Universal Expectations Targeted Suspensions and Attendance/ high priority areas
- 2014 – Systems in place to review and target data using MAP/ Began Blue party celebrations
- 2015 – Classroom/Building competitions to target classroom gains/ System set up for review of student work/feedback
- 2016 – Teacher ownership of evidence pieces and dates/ Rigor based on CCSS/ WMELS
- 2017 – Feedback teacher to teacher of grade level expectations/ Boys and Girls Club
- 2018 – Selected to become an I.B. Primary Years Programme (PYP) School

School Climate Data



Attendance -

2015 – 90.3%

2016 - 92.5%

2017 – 92.1 %

2018 – 91.8% *** students assigned from out of our region – no transportation provided

Suspensions –

- 2015 – 4.4% (16)
- 2016 – 4.9% (17)
- 2017 – 1.9% (6)
- 2018 – 3.6% (11)
- RTI Implementation–
 - 2016 – 17 - Distinction
 - 2017 – 18 – Behavior - Silver



Academic Highlights

Year	State Report Card Rating	Academic Data	Academic Recognition
2015	N/A	MAP Assessment: Gap Closure- Math 14.9%, Reading 12.2%	N/A
2016	58.1-Meets Few Expectations	STAR Assessment: Prof/Adv- Math 31%, Reading 44% Gap Closure- Math 28.9%, Reading 25.7%	N/A
2017	82.9- Exceeds Expectations	STAR Assessment Prof/Adv-Math 58% Reading 41% Gap Closure- Math (No Gap), Reading 72%	School of Merit- Reading School of Merit- Math
2018	N/A	STAR Assessment: Prof/Adv- Math 50%, Reading 26% Gap Closure- Math 47.7%, Reading 30.7%	Silver Level-Reading Silver Level-Math Silver Level-Rtl



Partnerships/Associations

✓ Wheaton Franciscan – Doctor Program

✓ **United Methodist Church of Whitefish Bay**
–volunteers The logo for the United Methodist Church of Whitefish Bay, featuring a blue cross icon and the text "UNITED METHODIST CHURCH of Whitefish Bay" in blue and green.

✓ Pitney Bowes

✓ **Johnson Controls**



✓ Unison/SET – Peace Program

✓ Schools That Can



Thank you.

Presenters:

Janice M Carter, Principal, Pratt School

Sean Goldner- Luedtke, SST, Pratt School



Keith P. Posley, Ed.D., *Interim Superintendent*





Keith P. Posley, Ed.D., *Interim Superintendent*

