

# Montessori Strategic Plan Update

February 11, 2021



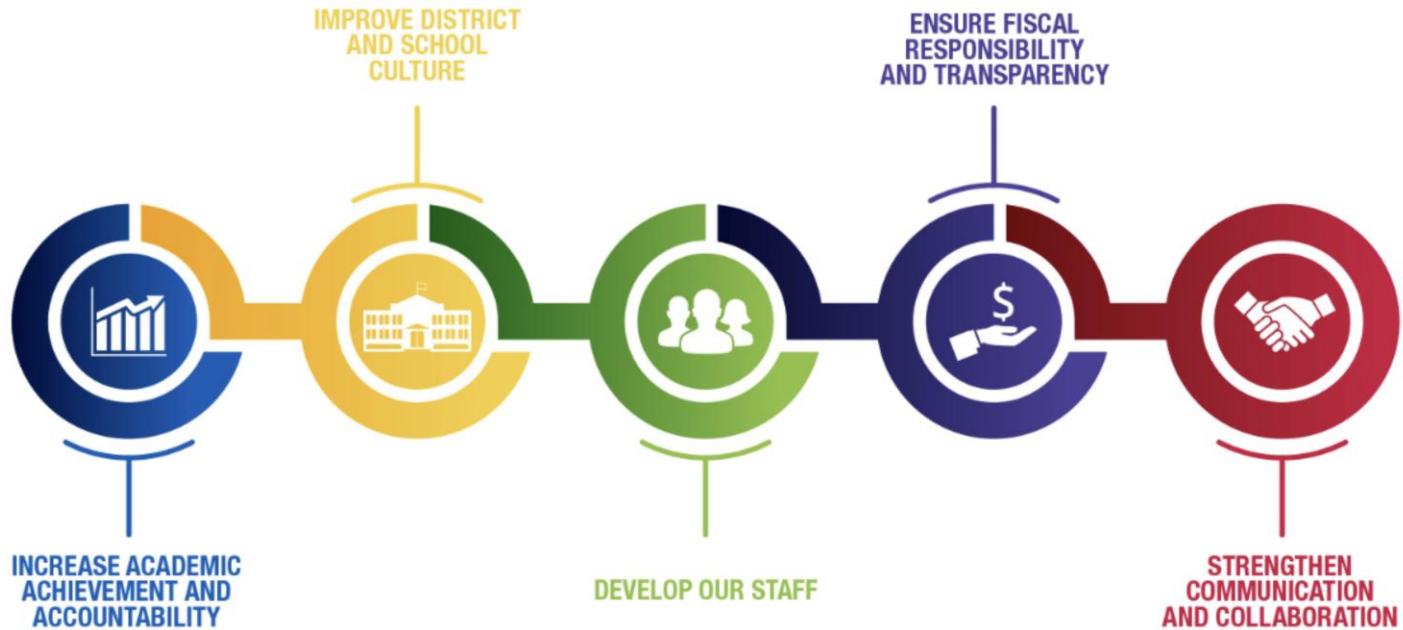
**MILWAUKEE**  
PUBLIC SCHOOLS

**Presenters:**

Abigail Rausch, Montessori Coordinator, Department of Curriculum and Instruction  
Joe DiCarlo, Principal, Maryland Ave Montessori School  
Roni Idom, Parent, Montessori Advisory Committee

Dr. Keith P. Posley, *Superintendent*

# Five Priorities for Success



# Montessori Strategic Plan Progress

## Completed Work

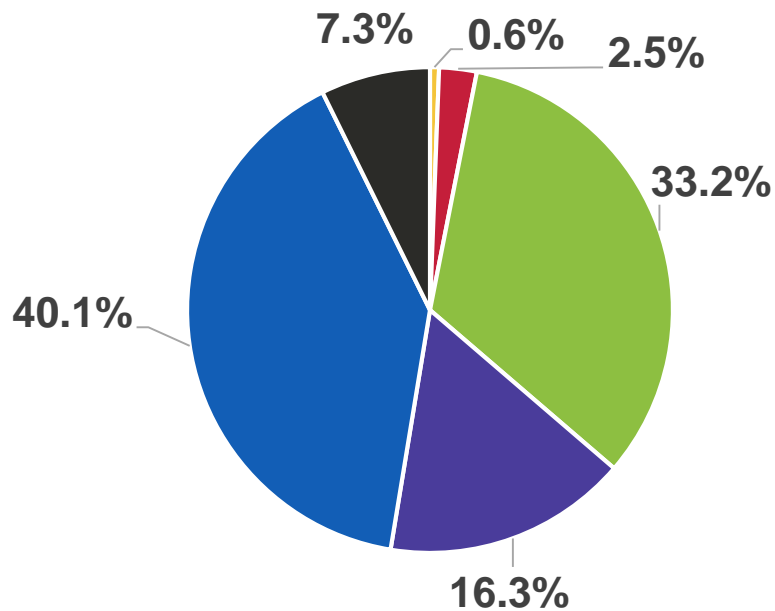
- Presented professional development to districtwide Montessori staff
- Coordinated and developed the six week virtual curriculum guides for weeks 19-24
- Montessori Advisory Committee monthly meetings for December, January, February
- Distributed year two Montessori Scholarships
- Oriented new teacher, recently arrived from Mexico
- Participated in the Kindergarten Enrollment Fair, Feb.6 and Feb. 20
- Montessori Marketing complete

## Current Work

- Holding virtual monthly Montessori principal meetings
- Participating in bi-weekly virtual Montessori school support teacher meetings
- Providing targeted support for Montessori virtual instruction
- Coordinating and developing of the six week virtual curriculum guides for weeks 25-30
- Developing a retention survey for Montessori program employees

# Montessori Schools Demographics

- 3,536 students
- 8 schools\*
- 1.2% English language learners
- 14.6% students with disabilities
- 47.5% economically disadvantaged



\*Riley Elementary Montessori is through Grade 2

American Indian  
Hispanic

Asian  
White

Black/African American  
Two or More

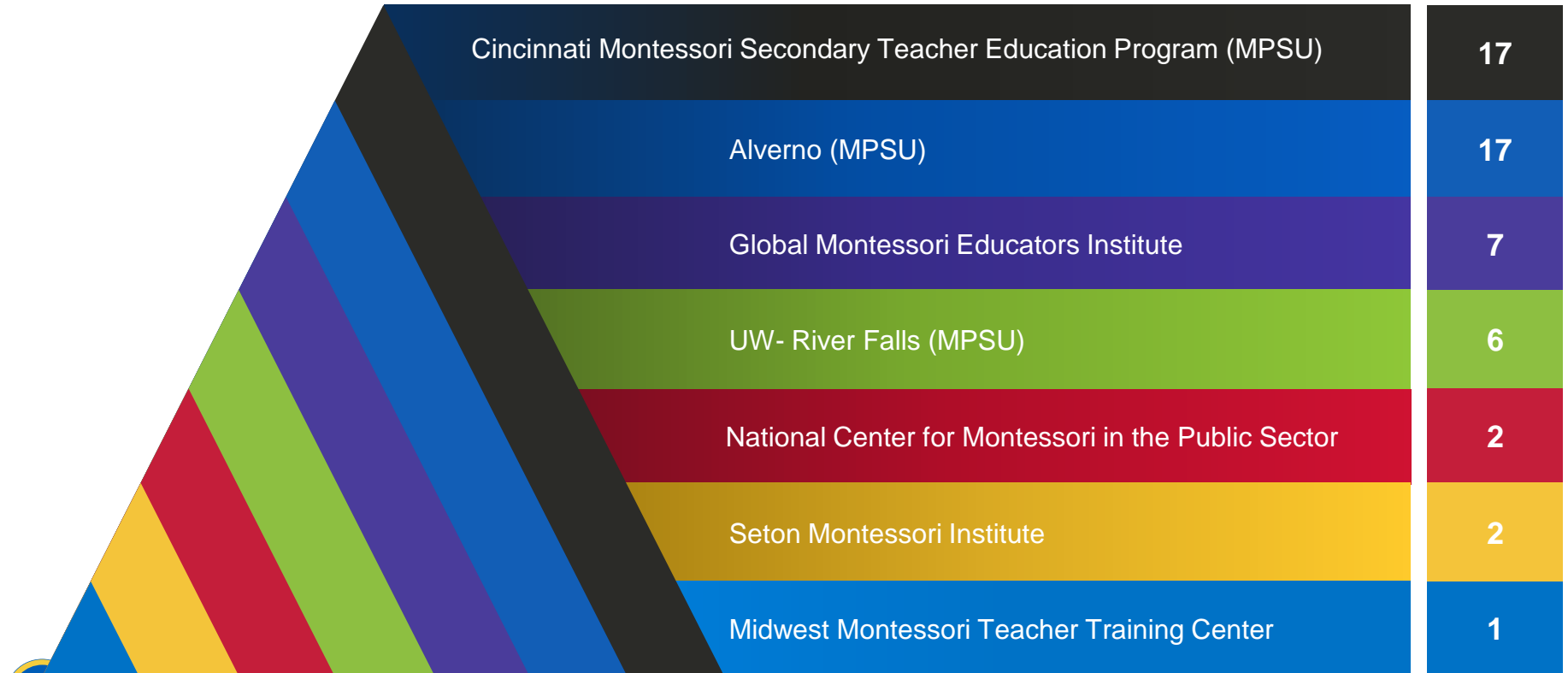


# Montessori Expansions

- Bay View
  - Second campus
  - Montessori through grade 7
- MacDowell
  - Added 5 classes in the last 5 years
- Riley Bilingual
  - Montessori through grade 2
  - Traditional and bilingual through grade 5



# MPS Employees in Montessori Certification



# Montessori Strategic Plan: Next Steps

March  
2021

- Montessori Advisory Committee meeting
- Finalize Montessori material ordering requirements for expansions
- Establish secondary education committee to define expectations for the implementation of Montessori middle school curriculum

April  
2021

- Montessori Advisory Committee meeting
- Finalize MPSU pathway for state licensing support for Montessori teachers completing Montessori Certification
- Continued support for Montessori virtual instruction will be developed and provided as deemed necessary

May  
2021

- Montessori Advisory Committee meeting
- Develop Montessori-specific summer school curriculum
- Develop Montessori teacher-to-administrator pathway

# Thank you.



Dr. Keith P. Posley, *Superintendent*

© 2021 Milwaukee Public Schools • 8