



MILWAUKEE
PUBLIC SCHOOLS

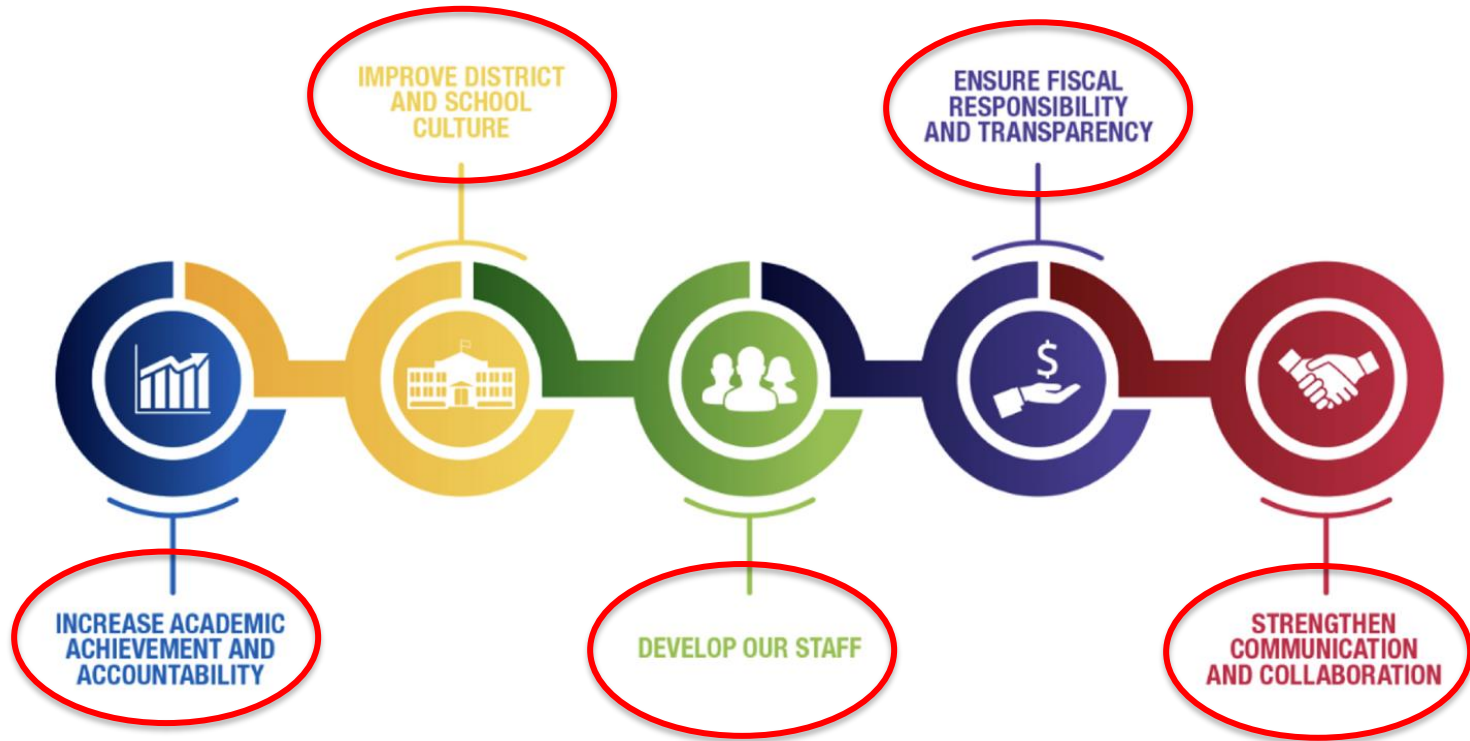
Update on Resolution 2122R-008 — Strategic Planning

Melanie R. Stewart, Ph.D.,
Director of Research, Assessment, and Data

January 24, 2023

Dr. Keith P. Posley
Superintendent

Five Priorities for Success



Resolution

- October 2021 – Resolution 2122R-008 was approved by the Board of Directors
 - Timeline of process needs is posted
 - Community-wide input
 - Plan covers a specific time frame
 - Includes a mission statement, goals, and objectives
 - Includes accountability measures and annual performance targets

MPS Mission

Milwaukee Public Schools is a diverse district that welcomes all students and prepares them for success in higher education, post-education opportunities, work, and citizenship.

2021–2022 Baldrige Framework Overview



From Baldrige Performance Excellence Program. 2021. *2021–2022 Baldrige Excellence Framework: Proven Leadership and Management Practices for High Performance (Education)*. Gaithersburg, MD: U.S. Department of Commerce, National Institute of Standards and Technology. <https://www.nist.gov/baldrige>.

Team

- Data Metrics – Melanie Stewart and Natalie Collins
- Technology and Communications – Chad Meyer, Nicole Armendariz, and Stephen Davis
- Senior Leadership – Eduardo Galvan
- Human Resources – Pepper LaMothe and Alexandra Kestner
- Finance – Shelley Perkins
- Academics – Felicia Saffold and Lorena Gueny
- Equity and Inclusion – Patricia Ellis
- Operations – Michelle Lenski
- Governance – Jacqueline Mann and Nita Farrow
- Strategic Partnerships – Christy Stone
- Chiefs – Paulette Chambers, Katrice Cotton, Martha Kreitzman, Adria Maddaleni, and Jennifer Mims-Howell



Strategic Planning Surveys

- Kickoff presentations were delivered to leaders January 11 and 12
- Strategic planning surveys were released January 17
- Short videos were shared with leaders and teachers that can be viewed prior to staff and students taking the survey
- Website was updated

Students and Staff

- Hosted for confidentiality by University of Wisconsin–Milwaukee
- School leaders were asked to schedule a day and time for staff and students to take the survey the week of January 23 or January 30
- District leaders were asked to schedule a department meeting for survey completion

Community and Families

- Community communications include two press releases and social media post
- Media coverage occurred
- Families received notice via Friday Family Newsletter, email, and social media
- Seeking groups that we can share information with on the strategic plan and the survey





**MILWAUKEE
PUBLIC SCHOOLS**

District

Schools

MPS > District > Initiatives & Strategic Planning > Strat

Strategic Plan

District

Website

- Update main page
- Organizational profile
- Data collected to date
- Survey link
- Survey count will be updated weekly

Survey Responses

- Responses as of January 23
 - Students
 - Staff
 - Families
 - Community



Please Share Your Insights

- Family and Community Survey



https://mpsresearch.co1.qualtrics.com/jfe/form/SV_cwil7nLKX5lfNJA



Please Share Your Insights

Students in Grades 6–12

Teachers will share survey link with students to complete during class between January 23 and February 3



All Staff

Survey has been shared with staff

Time will be provided during work hours to complete the survey



**MILWAUKEE
PUBLIC SCHOOLS**

**Thank
You!**