

ACCESS for ELLs® 2019-20 Results



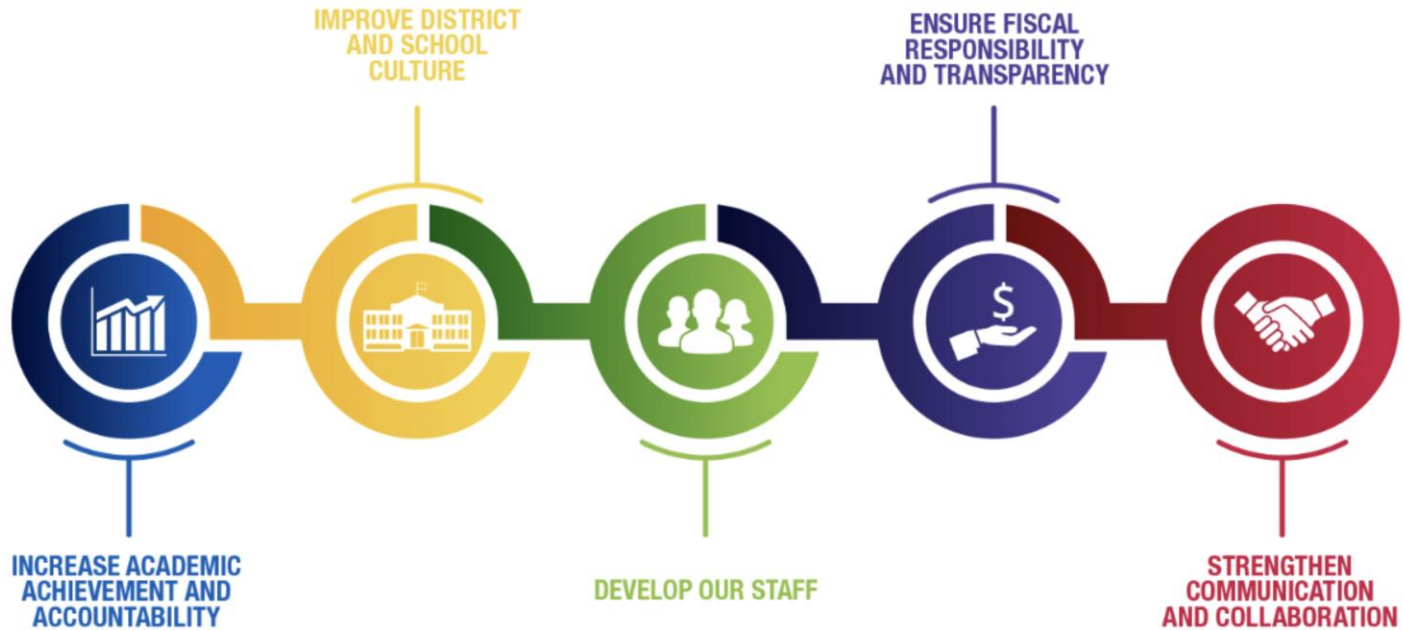
September 10, 2020

MILWAUKEE
PUBLIC SCHOOLS

Presenters: Melanie R. Stewart, Ph.D. Director Research, Assessment and Data

Dr. Keith P. Posley,
Superintendent

Five Priorities for Success

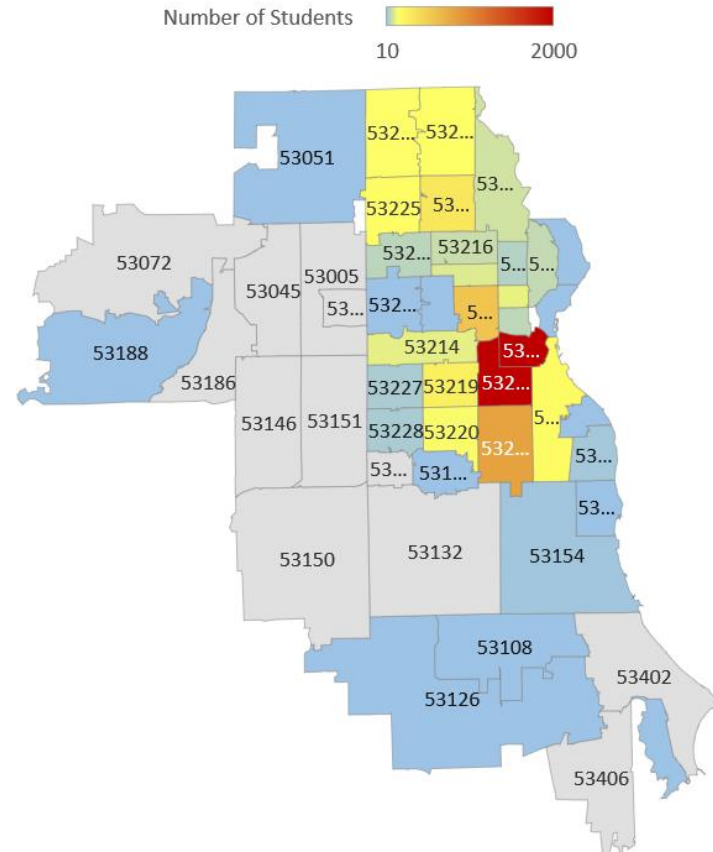


ACCESS for ELLs®

- Federal and state laws require that students identified as English Learners (ELs) be assessed annually to determine their level of English language proficiency (ELP) and ensure that they are progressing in achieving full English proficiency. This includes students who receive special education services.
- In addition to meeting these statutory accountability requirements, the annual ELP assessment can be effectively used for planning and instructional purposes. It serves as the single most psychometrically valid and reliable measure of a student's ELP.

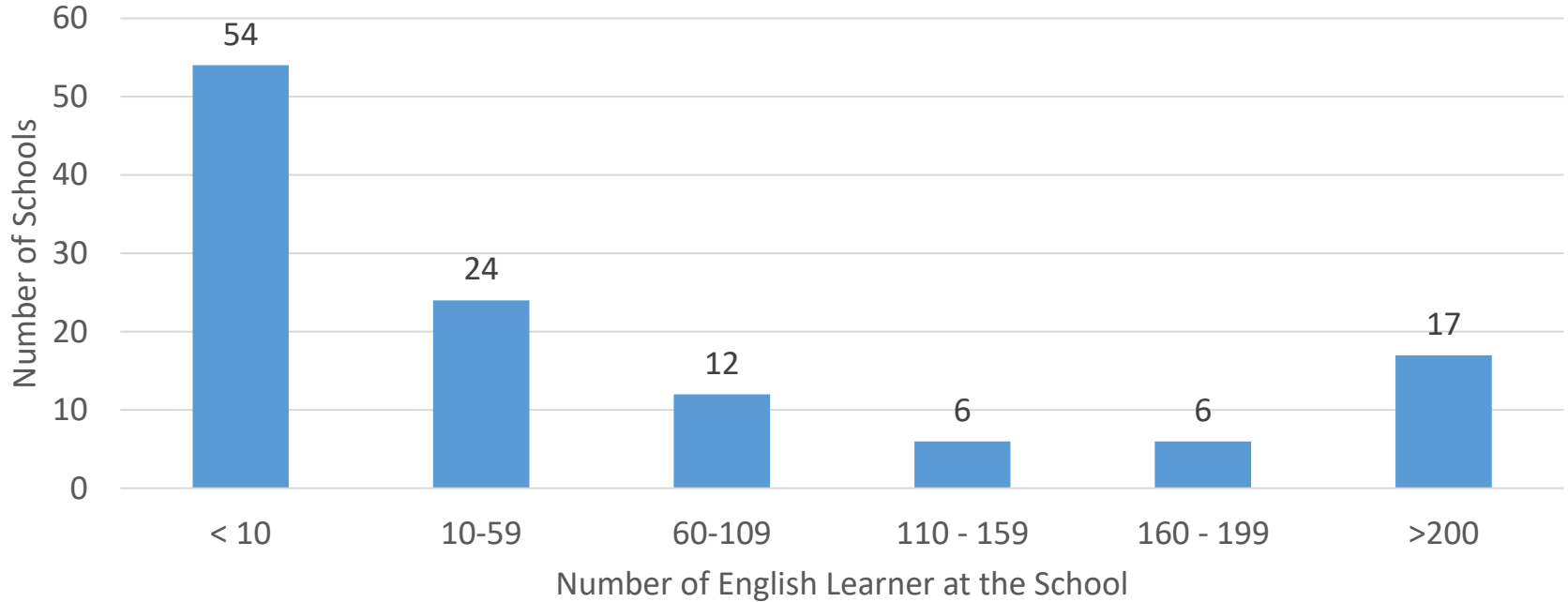
Geographic Data

EL Students by Home Zip Code



Region	Number of EL Students
Central	610
Citywide	961
Contracted (Partnership and Non-Instrumentality)	1064
East	923
High School	1004
Northwest	188
Southwest	3931

Number of Schools with Varied English Learner Populations



Number of English Learner by Grade Level and Race/Ethnicity

Grade	Number of EL Students	Grade	Number of EL Students
K5	719	7 th	733
1 st	794	8 th	621
2 nd	877	9 th	691
3 rd	897	10 th	526
4 th	796	11 th	460
5 th	664	12 th	165
6 th	738		

Race	Percent
Hispanic/Latino	68.8%
American Indian/Alaska Native	0.1%
Asian	22.9%
Black or African American	5.0%
Native Hawaiian/Other Pacific Islander	<0.1%
White	3.2%
Two or More	0.1%



ACCESS for ELLs®

Domains

- Speaking
- Reading
- Listening
- Writing

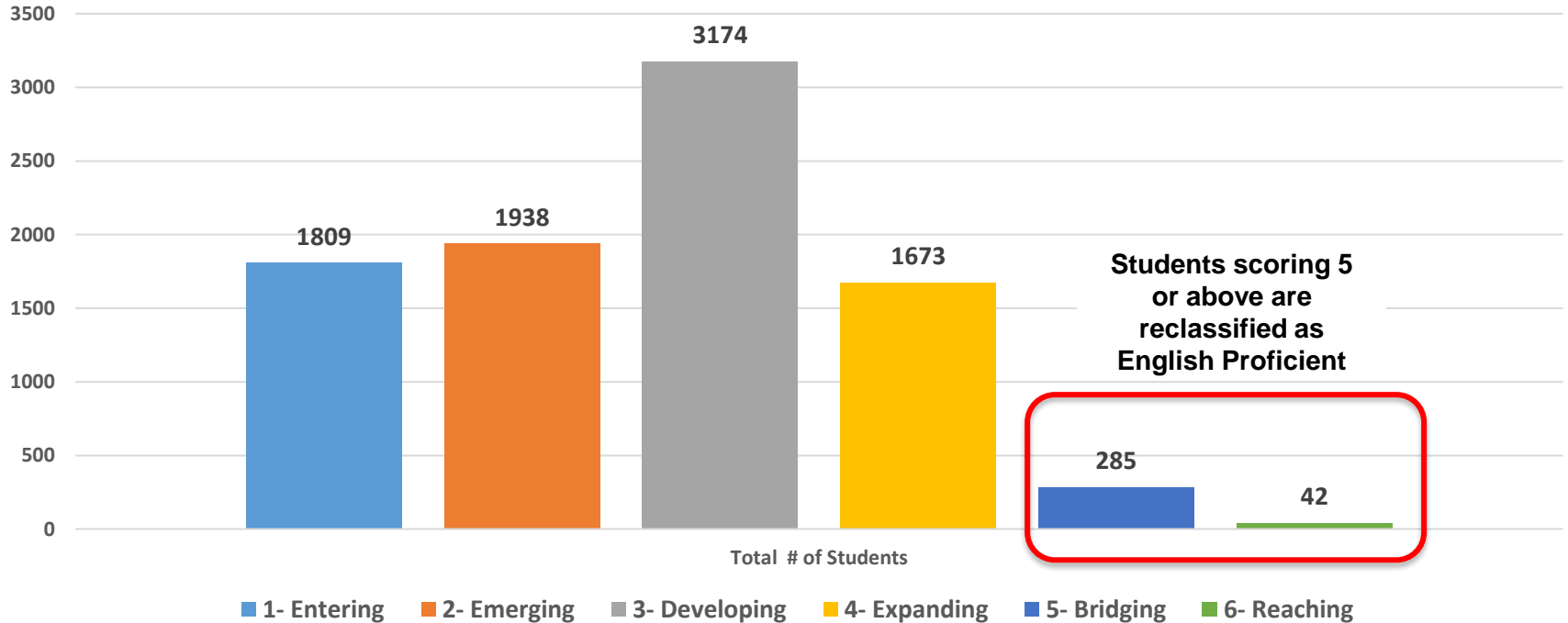


Format

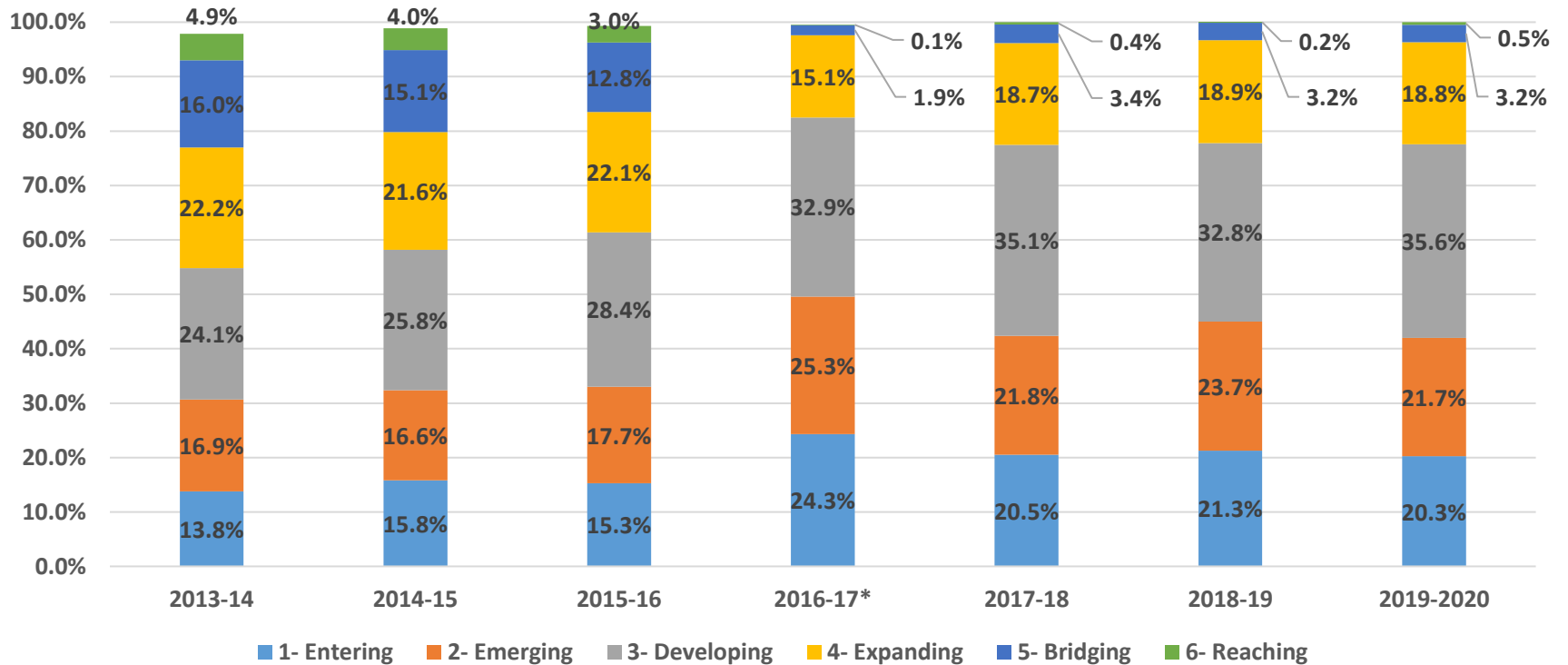
- Computer Based
- Adaptive
- Writing grades 1-3 on paper
- Kindergarten is administered 1-on-1
- Parent guides to reports in 13 languages

2019-20 ACCESS for ELLs[®] Results

Total Number of Students in ELP Levels



Percentage of Students in English Proficiency Levels

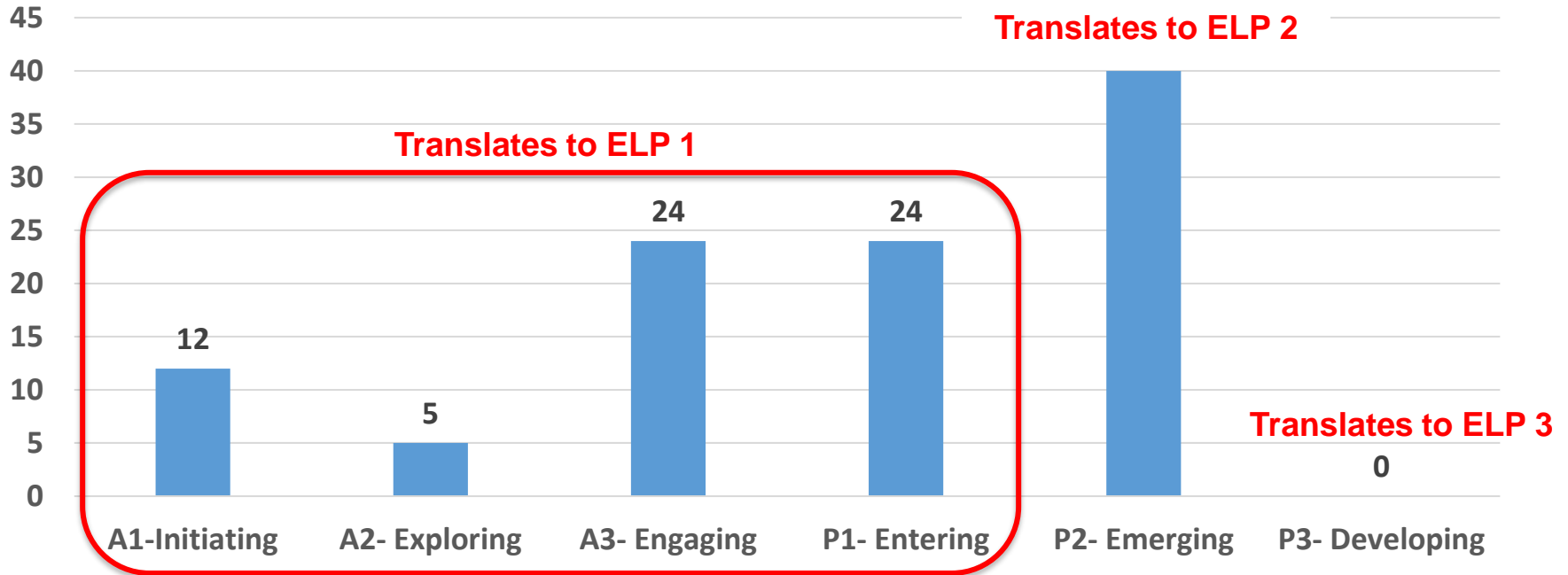


***Indicates the change to College Career Readiness Proficiency Levels**

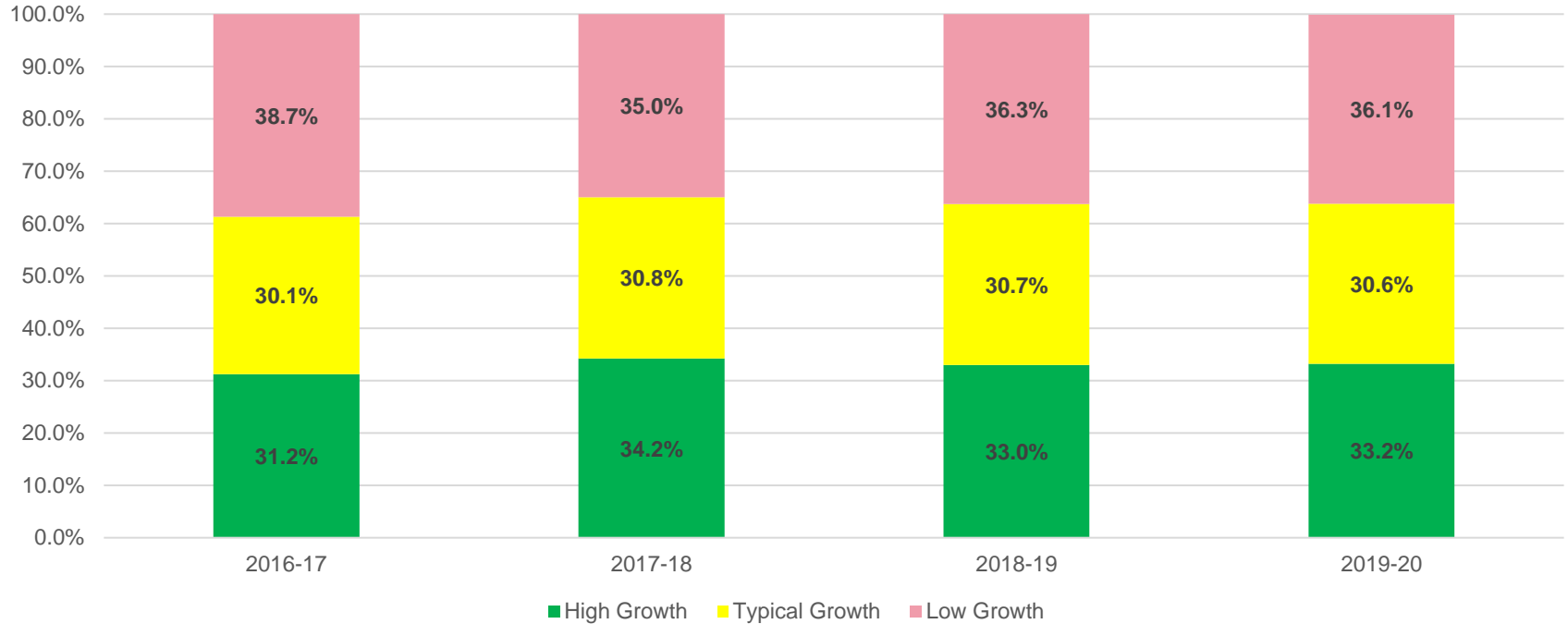


2019-20 Alternate ACCESS for ELLs®

Number of Students Taking Alternate ACCESS



ACCESS Overall Growth Level



**Part of Every Student Succeeds Act
Accountability and Identification**



Thank you.



Dr. Keith P. Posley, *Superintendent*