

# Bilingual Multicultural Education

February 2022



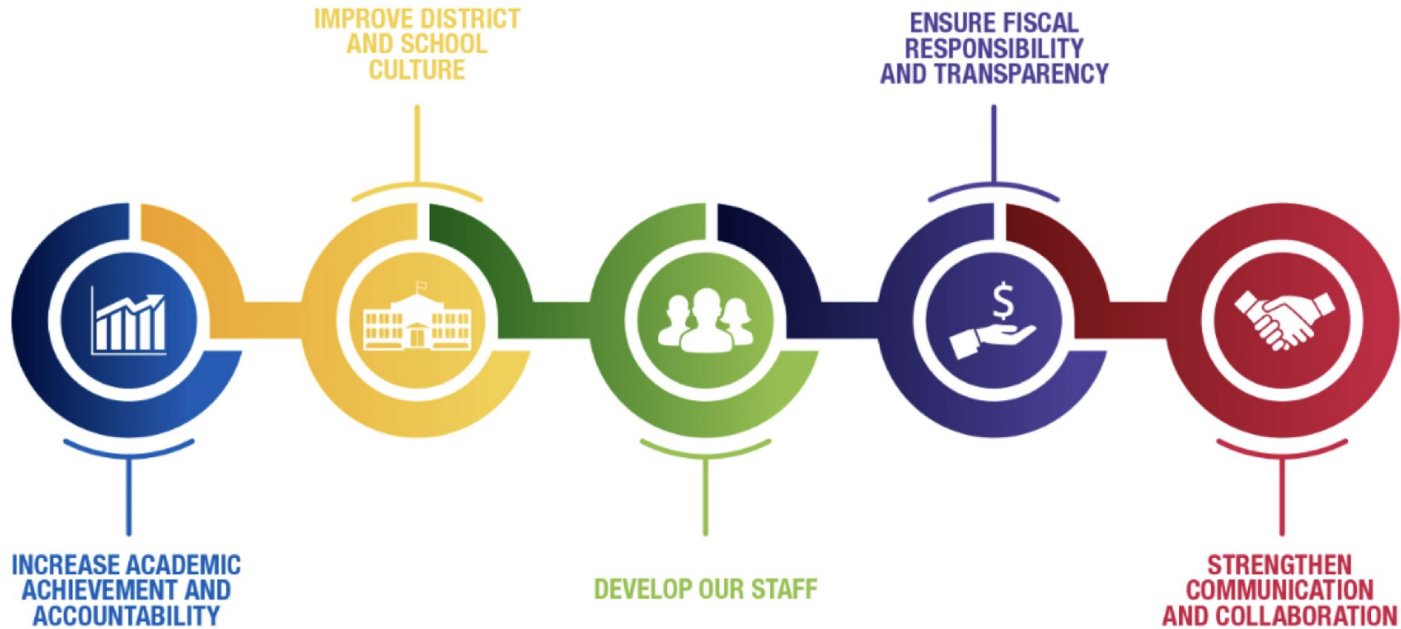
**MILWAUKEE**  
PUBLIC SCHOOLS

***Presenters:***

Eduardo Galvan, Regional Superintendent  
Lorena Gueny, Director, Bilingual Multicultural Education

*Dr. Keith P. Posley, Superintendent*

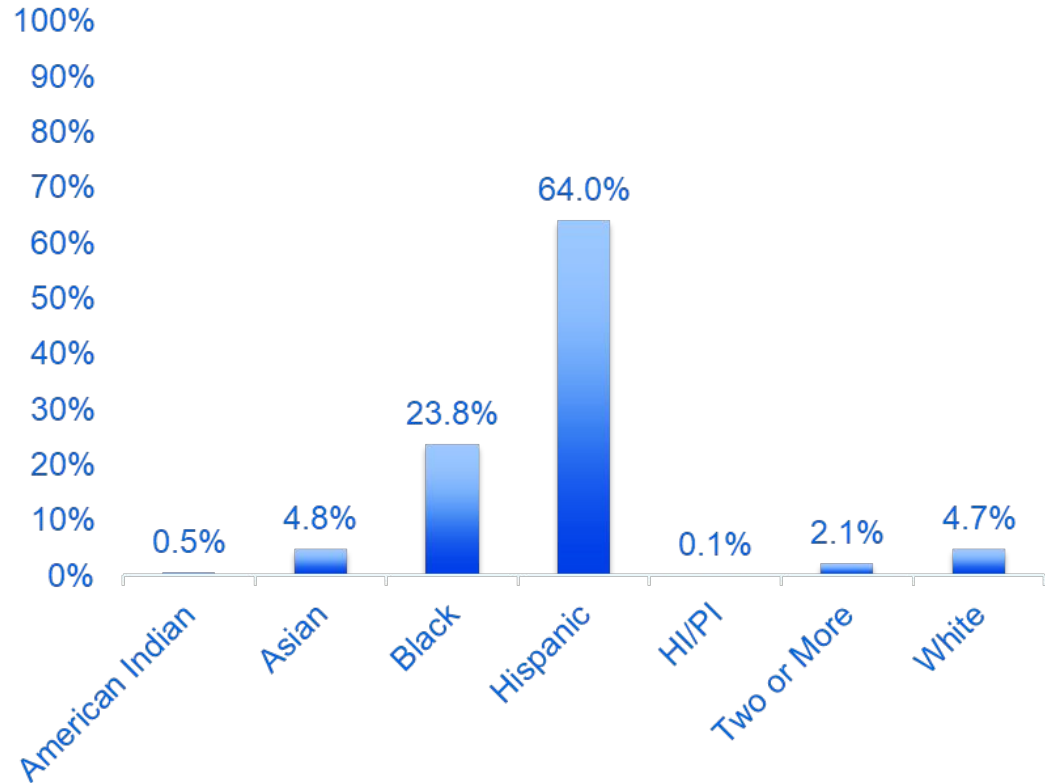
# 5 Priorities for Success



# Bilingual Schools

## 2021-22

- 15,300 All Students Served
- 21 Schools
- 37.2% English Language Learners
- 23.2% Special Education
- 81.0% Economically Disadvantaged



# Bilingual Multicultural Education Department

---

- **Mission:** The mission of the Department of Bilingual Multicultural Education is to provide equitable access to quality multilingual and multicultural programming in Milwaukee Public Schools.
- **Vision:** MPS students graduate with strong cultural and linguistic identities, leveraging these assets to navigate college, career, and life as global citizens in an inclusive society.



# Fundamentals: Resolution 1415R-003

---

- Bilingual expansion and programming
- Parent engagement and marketing
- District Multicultural Multilingual Advisory Council - DMMAC
- Seal of Biliteracy
- Professional development to schools



# Program Updates

Program	Updates	Next Steps
Bilingual	<p>Regularly Update Biliteracy Year-at-a-Glance</p> <p>Write/Revise ¡Arriba la Lectura! Biliteracy Units</p> <p>Write/Revise Galería de lengua y cultura Biliteracy Units</p> <p>Continue with Reading Adoption Professional Development ¡Arriba la Lectura!, K5-6th grade Galería de lengua y cultura, 7th-8th grade</p> <p>Begin offering Saturday planning support sessions.</p>	<p>Continue to update and develop biliteracy units pertinent to ¡Arriba la Lectura! and Galería de lengua y cultura</p> <p>Continue to offer professional development pertinent to the Reading Adoption and Biliteracy Pedagogy</p>



# Program Updates

Program	Work in Progress	Next Steps
<p>English as a Second Language (ESL)</p> <p>English Language Development (ELD)</p>	<p>Received the Refugee School Impact and Refugee Youth Mentoring grants.</p> <p>Kicked off a pilot school approach with Story School to provide differentiated professional development and coaching around ELD.</p> <p>Identified Kagel School as a Bilingual Dual Language ELD Pilot School.</p> <p>Provided updates around ESL and ELD to school leaders during drop-in sessions at the January institute.</p> <p>Provided 24 new ESL teacher support sessions to 9 first-year ESL teachers and 29 support sessions for all K-12 ESL teachers.</p>	<p>Implement the ELD action plan, 2021-2024.</p> <p>Offer professional development on the ELD framework to all schools that educate English Learners.</p> <p>Analyze outcomes from pilot schools to continuously shape and enhance Ambitious Instruction plan for English learners.</p> <p>Provide differentiated professional development and coaching sessions.</p>



# Program Updates

Program	Work in Progress	Next Steps
World Languages / Immersion	<p>Continued work to Path to Proficiency language acquisition Curriculum Map and Lesson Plan Template.</p> <p>Nine new teachers have been hired in our World Languages program.</p> <p>Proximity Learning continues to provide MPS with license world languages teachers where needed.</p>	<p>Implementation of Mango Languages for the whole district.</p> <p>Continue to offer professional development for all teachers on the addition of Mango Languages as a classroom resource. One on one teacher leader support for new teachers.</p> <p>Summer Opportunities for credit recovery and acceleration will be provided by Proximity Learning.</p>
Seal of Biliteracy (SBL)	<p>There are approximately 150 students working on the Seal of Biliteracy this year from nine different high schools.</p>	<p>Spring assessment for languages other than English via AAPPL and OPI.</p> <p>Adding 22 more low incidence partner languages spoken by our MPS student population in the criterion.</p>





# DMMAC Update

---

## •Current updates:

- Development of Recruitment Strategy
- Updates on World Language Recommendation Plan
- Information Session on Mango

## Upcoming Meetings

2/16, 3/16, 4/20, 5/18, 6/8



# Thank you.



Dr. Keith P. Posley, *Superintendent*

© 2021 Milwaukee Public Schools • 10