

# Bilingual Multicultural Education

October 5, 2021



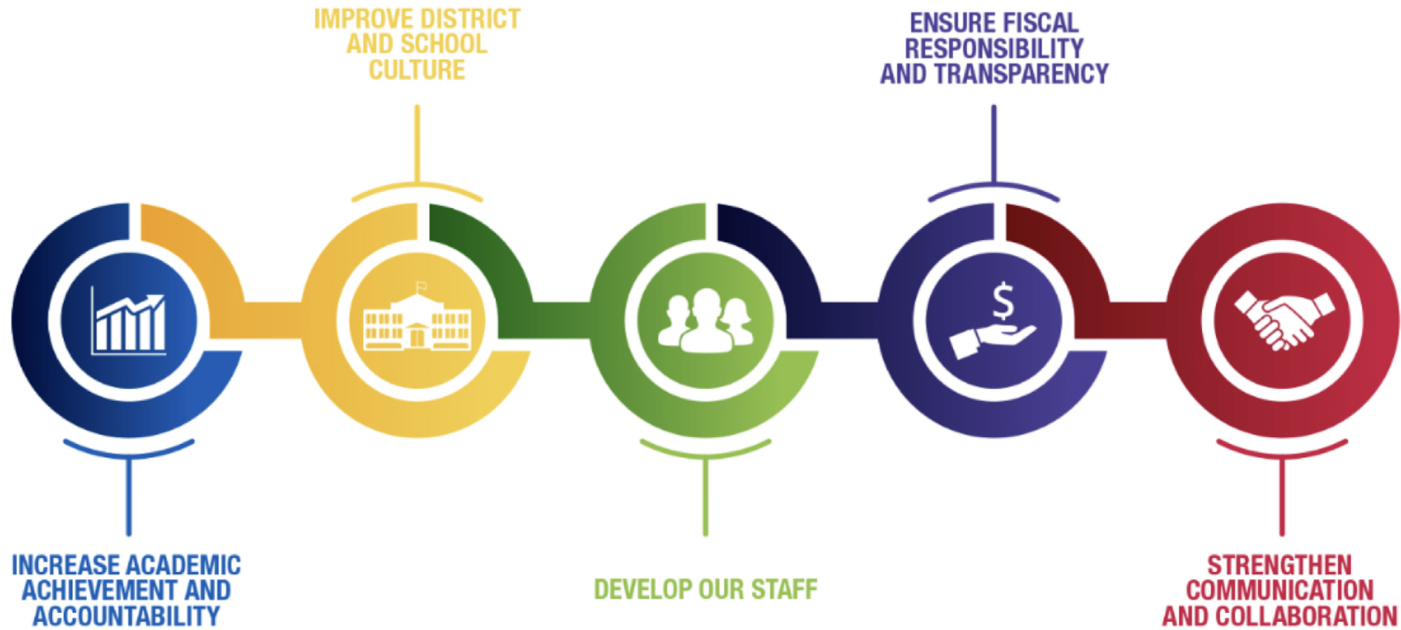
**Presenters:**

Eduardo Galvan, Regional Superintendent  
Lorena Gueny, Director, Bilingual Multicultural Education

**MILWAUKEE**  
PUBLIC SCHOOLS

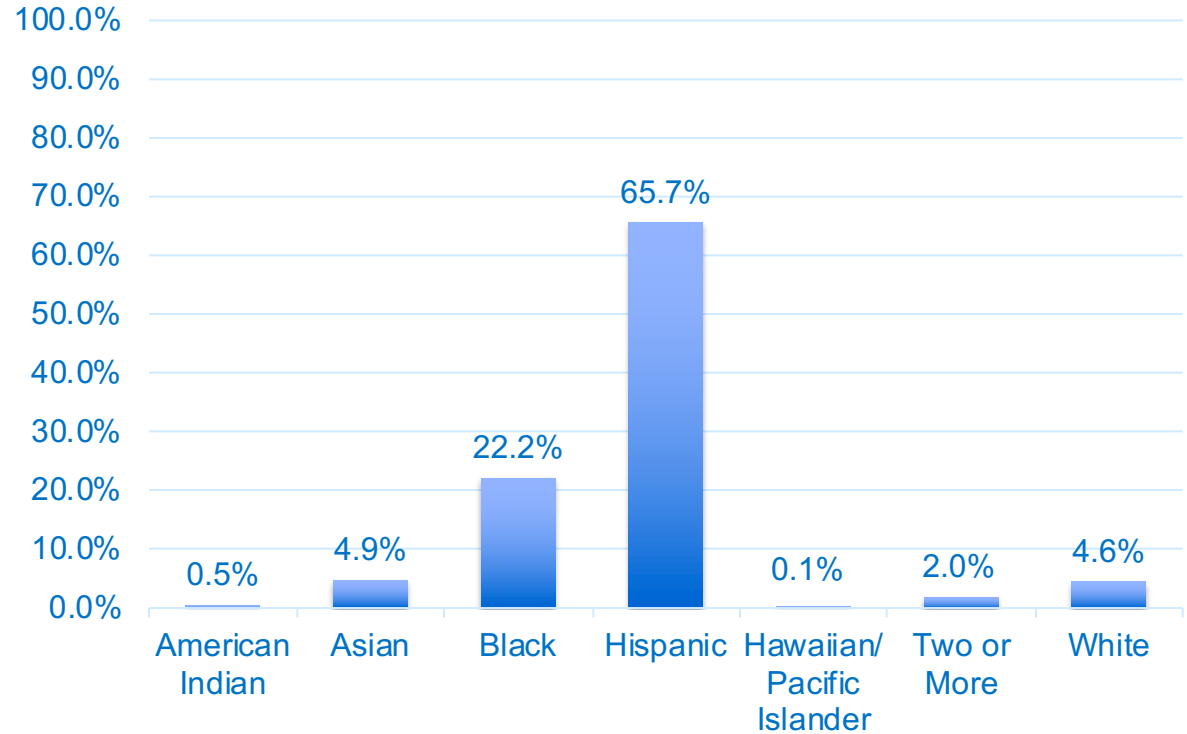
Dr. Keith P. Posley, *Superintendent*

# 5 Priorities for Success



# MPS Bilingual Schools

- 13,174 students
- 21 schools
- 38.1% English language learners
- 23.0% students with disabilities
- 80.6% economically disadvantaged\*



\*Alternate Income Forms continue to be collected and processed.



# Bilingual Multicultural Education Department

---

- **Mission:** The mission of the Department of Bilingual Multicultural Education is to provide equitable access to quality multilingual and multicultural programming in Milwaukee Public Schools.
- **Vision:** MPS students graduate with strong cultural and linguistic identities, leveraging these assets to navigate college, career, and life as global citizens in an inclusive society.





# Program Updates

Program	Updates	Next Steps
Bilingual	<p>Developed biliteracy year-at-a-glance</p> <p>¡Arriba la Lectura! biliteracy units</p> <p>Galería de lengua y cultura biliteracy units</p> <p>Reading adoption professional development ¡Arriba la Lectura!, K5-6th grade Galería de lengua y cultura, 7th-8th grade</p> <p>Biliteracy professional development Biliteracy unit exploration, K5-8th grade</p>	<p>Continue to develop biliteracy units pertinent to ¡Arriba la Lectura! and Galería de lengua y cultura</p> <p>Continue to offer professional development pertinent to the Reading adoption and biliteracy pedagogy</p>

# Program Updates

Program	Work in Progress	Next Steps
<p>English as a Second Language (ESL)</p>	<p>Developed newcomer units using new English language development K-8 resources from Vista and National Geographic.</p> <p>Provided summer tutoring to 30 newcomer refugee youth in grades 9-12.</p> <p>Distributed Chromebooks and oriented 60 newcomer refugee families at the elementary/middle level on the use and care of the Chromebooks.</p> <p>Reapplied for the Refugee School Impact and Refugee Youth Mentoring grants.</p>	<p>Implement the English language development action plan, 2021-2024.</p> <p>Offer professional development on the English language development framework to all schools that educate English Learners.</p> <p>Continue to write units that model the use of the new English language development resources.</p>



# Program Updates

Program	Work in Progress	Next Steps
Seal of Biliteracy (SBL)	Fifty-eight students graduated with the Seal of Biliteracy from eight (8) different schools (Audubon, Bradley Tech, Golda Meir, King, Milwaukee School of Languages, Pulaski, Riverside, and South).	<p>Provide professional development for school based coordinators and advisors to begin SBL work for FY22.</p> <p>Developed SBL timeline for FY22.</p>
World Languages / Immersion	<p>Low Incidence Partner Languages included: Karen, May May, Swahili, and Vietnamese.</p> <p>Developed a Path to Proficiency language acquisition curriculum map and a lesson plan template.</p>	<p>Begin a Swahili student Cohort lead by Ms. Selline Onalo from Riverside University High School.</p> <p>Purchasing online interactive resources adoption: DawnSignPress for American Sign Language and Mango Languages for all other languages, including ESL.</p> <p>Purchasing e-portfolio: LinguaFolio</p>



# Program Updates

Program	Work in Progress	Next Steps
Andrew Douglas	World Language expansion - Spanish	<p>The classes at these three sites are taught through proximity learning. BME will work with HR to place a teacher should one become available.</p> <p>These additions join seven other World Language/IB sites that offer language classes. These seven schools are: AAL, Lowell, King Middle School, Morse, Pratt, Stuart and Wedgewood.</p>
Golda Meir	World Language expansion – Spanish and French	
Morgandale	World Language expansion – Spanish	



# Program Updates

Program	Work in Progress	Next Steps
Curtin	Addition of 0.5 ESL teacher this year.	Provide services to ESL students and monitor growth of ELs at school. If numbers support, additional ESL allocation adjustments will be made.
Kagel	Kagel School added sixth grade this year as the program continues to grow.	Addition of 7 <sup>th</sup> grade for next school year.
Riverside	This year added 11 <sup>th</sup> grade bilingual class.	Continue to work with administration and student services to grow program and recruit bilingual students. Bilingual Multicultural Education department will continue to provide PD and program support.
Hamilton	This year added 10 <sup>th</sup> grade bilingual class.	Continue to work with administration and student services to grow program and recruit bilingual students. Bilingual Multicultural Education department will continue to provide PD and program support.
Marketing	Working with BME and communications, two flyers were developed to assist with marketing of the programs offered for language instruction.	Continue to work to develop marketing materials. The input from the DMMAC parents will be sought for future marketing ideas.



# District Multicultural Multilingual Advisory Committee Updates

---

- **First meeting:** October 20, 2021 virtually (zoom) at 5:30pm.
- **Agenda:** TBD at first meeting.
- **Current updates:** Recruiting parents and families, engaging with community partners and brainstorming with school staff to ensure everyone has access to DMMAC.

## Upcoming Meetings

11/17, 12/15, 1/19, 2/16, 3/16, 4/20, 5/18, 6/8



# Thank you.



Dr. Keith P. Posley, *Superintendent*