

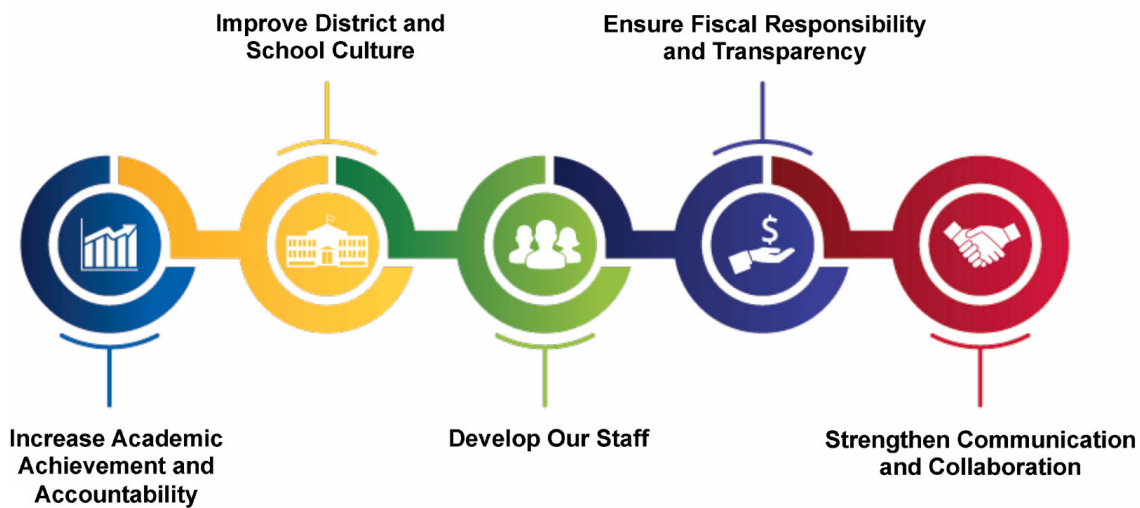


**MILWAUKEE
PUBLIC SCHOOLS**



Superintendent’s Report – July 2020

The Superintendent’s Report is designed to provide the Milwaukee Board of School Directors and the MPS community with an update on current activities underway to support the district goals of academic achievement; student, family and community engagement; and effective and efficient operations as they are aligned to the district’s strategic objectives and the Five Priorities for Success.



MPS COVID-19 Update

There have been many impacts to Milwaukee Public Schools as a result of the COVID-19 pandemic. The district is continuing its extensive planning and implementation efforts to support members of the MPS family during this time including the following examples:

- Collected feedback and input regarding the district’s reopening plan via a number of mechanisms (including a survey and work groups) from students, families, staff, stakeholder groups, as well as state and local leaders.
- Developed a reopening plan and phased-in reopening recommendation for consideration by the Milwaukee Board of School Directors.
- Continued Stop, Grab, and Go sites to distribute healthy meals through summer months.
- Delivered Summer Academy 2020 via a virtual format.
- Provided helplines and district updates to keep families informed and provide assistance.

District leadership will continue these and more efforts to support all members of the MPS family.

Helplines and District Updates Keep Families Informed



MPS is continually seeking ways to support our students and families during school closures. Get access to the latest information and assistance through our phone lines, website, schools, app, and other sources.

MPS Central Services phone lines are open for questions -- call (414) 475-8393. MPS has also created a special hotline -- (414) 475-8900 -- to provide assistance and guidance to families. Both lines are open Monday through Friday from 8:00 a.m. to 5:00 p.m.

Families of students receiving Specialized Services Support can access assistance regarding their child's education. Call (414) 438-3648 and leave a message stating the student's name and birth date along with your name and contact information. You will be contacted within 24 hours of your call.

Both lines are open Monday through Friday from 8:00 a.m. to 5:00 p.m.

Looking for Child Care Near You?

Looking for child care options near you this summer? Milwaukee Recreation has openings at sites across the city.

Milwaukee Recreation has select availability remaining in our Child Care Camps, Community Learning Centers (CLCs), and Safe Places.

These programs - offered in nearly 50 locations around Milwaukee - safely provide academic support, enrichment, and recreation to youth throughout the summer.

Visit these links to find more information on all [Child Care Camp](#) locations, as well as [CLCs and Safe Places](#).



You can also search for the site nearest to your preferred address [here](#) (to view only Summer Camp sites, click on "Recreation Before and After School" at the bottom of the map).

Register

All sites are open and accepting registrants. Prices vary by location. To register, please contact the Site Coordinator at your desired location (contact information listed in the above links).

Cool off at a Wading Pool this summer!

Cool off this summer with Milwaukee Recreation's Wading Pools! Three sites opened on July 13.

Children ages 8 and under are invited to visit any of the locations listed below to cool off and enjoy the water features.

Enderis Playfield (2938 N. 72nd St.)

- Wading Pool Open: 11:00AM - 3:00PM

Merrill Playfield (461 N. 35th St.)

- Wading Pool Open: 10:30 a.m. - 2:30 p.m.
- Free Meals Available: 11-11:45 a.m.

Modrzejewski Playfield (1020 W. Cleveland Ave.)

- Wading Pool Open: 10:30 a.m. - 2:30 p.m.
- Free Meals Available: 11-11:45 a.m.

Additional Wading Pool sites will open this summer. Stay tuned to this [webpage](#) for more information.



Head Start Students Accessed Learning at Home in July



To help our youngest students continue learning, the MPS Head Start program offered summer activities during July. Families were able to help their children learn through Google Classroom. Children ages 3 and 4 who were enrolled in Head Start in spring participated.

Families were able to see important updates and access Frog Street for Young Learners, an award-winning curriculum for use at home. Children also read online books in English and Spanish and took part in a wide range

of learning activities. This opportunity allowed students to stay engaged in learning, continue to grow important skills, and build essential knowledge to help become strong readers. Also included were resources for health, mental health, disabilities, and family engagement.

Enrollment is Open for Fall 2020—Curbside Enrollment Dates Still Available!

Summer goes by quickly—enroll now for fall 2020! Milwaukee Public Schools is accepting enrollment for next school year. Select a school for your child now and fill out your enrollment for the best chance of getting your top school choice.

MPS is proud to have Chromebooks for all students to maximize learning. Caring, licensed teachers help make our learning environment warm and welcoming. School staff are eager to support families on their child's academic journey and with other needs and resources.

The district is home to nearly 160 schools and has a program for every student including Head Start, half- and full-day kindergarten, neighborhood schools, specialty schools, Montessori, language immersion, bilingual schools, special education, arts, Advanced Placement (AP), International Baccalaureate (IB), and more.

Families with children entering kindergarten, making the transition from elementary school to middle school (completed grade 5 and entering grade 6), or making the transition into high school (completed grade 8 and entering grade 9) should select their top school choices and complete their enrollment as soon as possible.

How to Enroll

Enroll online now at mpsmke.com/enroll.

Enrollment by phone is available Monday through Friday from 9:00 a.m. to 7:00 p.m. Call (414) 267-5100

Enroll curbside! Two dates are still available for families to enroll at MPS Central Services from the comfort and safety of their cars. Staff will direct traffic and process enrollments on the following dates:

Monday, Aug. 3: 9:30 a.m.–3:30 p.m.

Tuesday, Aug. 4: 9:30 a.m.–3:30 p.m.

Make sure your child is enrolled and will be ready for fall. Enroll today!

MPS Central Services is located at 5225 W. Vliet St. in Milwaukee. District offices remain closed to visitors.

Twilight Centers Opened Monday, July 13

Milwaukee Recreation's Twilight Centers returned on July 13. Youth and teens are invited to join us for free programming at safe places around the city.



The following high school sites are open to 12- through 18-year-olds on Mondays through Fridays from 5:30-9:00 p.m.

- Madison HS: 8135 W. Florist Ave.
- North Division HS: 1011 W. Center St.
- Obama SCTE: 5075 N. Sherman Blvd.
- Pulaski HS: 2500 W. Oklahoma Ave.
- South Division HS: 1515 W. Lapham Blvd.

Milwaukee Recreation also features a middle school Twilight Center, open to 10- through 15-year-olds on Mondays through Fridays from 5:00-8:00 p.m.

- Andrew Douglas MS: 3620 N. 18th St.

Bay View and Washington Twilight Centers are closed for the summer.

All participants must wear a mask and follow all implemented safety measures (masks will be available on site if needed).

NOTE: There will be no Family Nights this summer. All pools remain closed. Visit mkerec.net/twilight for more information.

TWILIGHT CENTERS

Open July 13 - Aug. 14

SITE NAME	ADDRESS	AGES	DAYS & TIMES
Madison HS	8135 W. Florist Ave.	12-18 yrs old	M-F / 5:30-9 p.m.
North Division HS	1011 W. Center St.	12-18 yrs old	M-F / 5:30-9 p.m.
Obama SCTE	5075 N. Sherman Blvd.	12-18 yrs old	M-F / 5:30-9 p.m.
Pulaski HS	2500 W. Oklahoma Ave.	12-18 yrs old	M-F / 5:30-9 p.m.
South Division HS	1515 W. Lapham Blvd.	12-18 yrs old	M-F / 5:30-9 p.m.
Andrew Douglas MS	3620 N. 18th St.	10-15 yrs old	M-F / 5-8 p.m.
Bay View HS	2751 S. Lenox St.	CLOSED	CLOSED
Washington HS	2525 N. Sherman Blvd.	CLOSED	CLOSED

Twilight Centers offer programming for youth and teens at select schools during the evenings. This is a free drop-in program.

Safety measures will be in place once participants arrive.
All participants must wear a mask (masks will be available on site).

Milwaukee Recreation will not offer Family Night programs this summer. Pools are also closed.

Visit mkerec.net/twilight for more information.



A department of MPS

Mobile Recreation Program Opens

Milwaukee Recreation rolled out its new drop-in mobile recreation program on Monday, July 6.

Mobile recreation vehicles have been visiting playfield sites throughout the city for 20-30 minutes at a time, providing structured play opportunities and exercise components. Children have the opportunity to take home the equipment they personally use during these activities.

All programs and equipment are free!



List of Mobile Recreation Locations

- Bryant Playfield: [5726 N 87th St.](#)
- Ben Franklin Playfield: [2308 W. Nash St.](#)
- Carmen Playfield: [7320 W. Carmen Ave.](#)
- Clarke Square Park: [2330 W. Vieau Place](#)
- Columbia Playfield: [1345 W. Columbia St.](#)
- Custer Playfield: [4001 W. Custer Ave.](#)
- Emigh Playfield: [495 E. Morgan Ave.](#)
- Green Bay Playfield: [3818 N. 8th St.](#)
- Holt Playfield: [1716 W. Holt Ave.](#)
- Lindbergh Park: [3629 N. 16th St.](#)
- Lindsay Park: [4360 N. 87th St.](#)
- Merrill Playfield: [461 N. 35th St.](#)
- Mitchell Park: [2200 W. Pierce St.](#)
- Modrzejewski Playfield: [1020 W. Cleveland Ave.](#)
- Southgate Playfield: [3350 S. 25th St.](#)
- Stark Playfield: [4951 N. 40th St.](#)

[Click here for specific site information and schedules \(scroll through the document to find your desired site\).](#)

Milwaukee Recreation also offers free meals for 6-17 year olds at various locations around the city. Find those locations and times [here!](#) (These meal sites will be grab-and-go only.)