

MPS Summer School Programming

January 2024

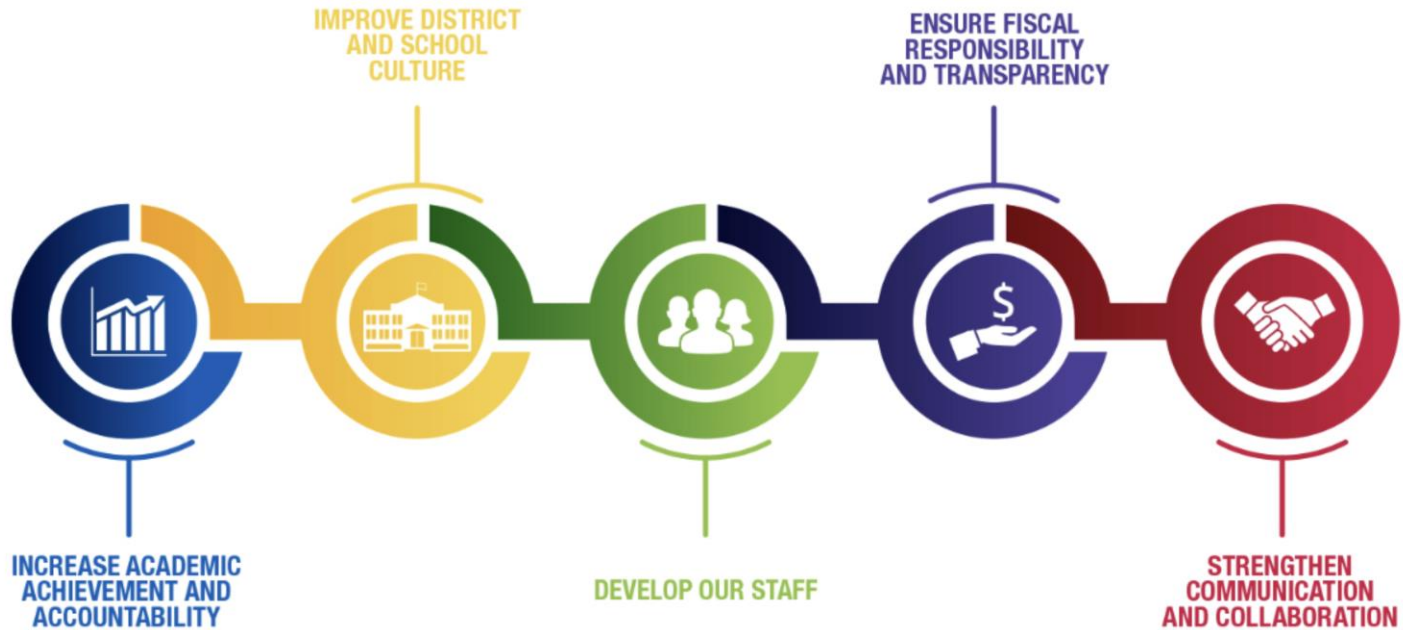


**MILWAUKEE
PUBLIC SCHOOLS**

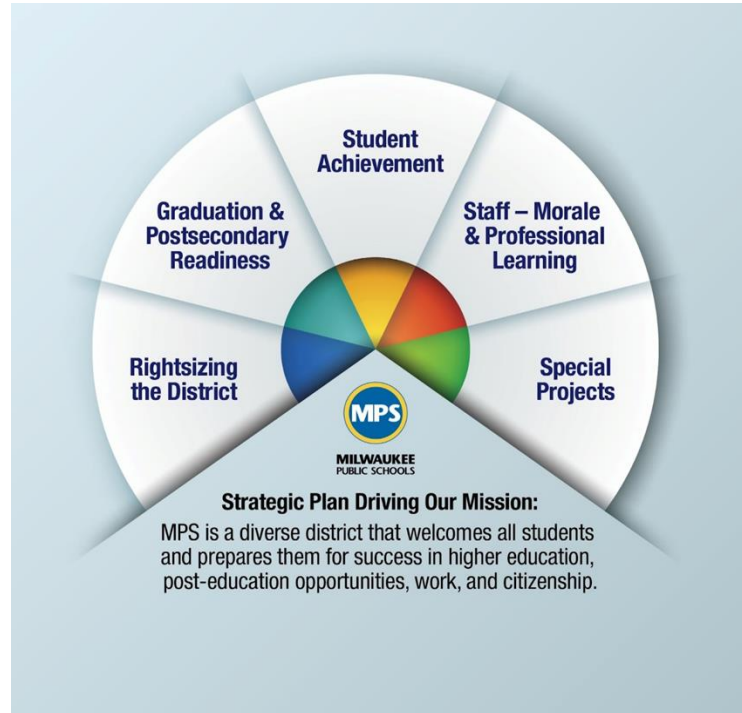
Presenters: Dr. John R. Hill, Director, Department of College and Career Readiness
Natalie Anderson, Manager, Extended Learning Opportunities
Dr. Leah Gilliam, Coordinator, Extended Learning Opportunities

Dr. Keith P. Posley,
Superintendent

Five Priorities for Success



MPS Strategic Plan



Highlights From Summer Academy 2023

- Over 2,700 courses completed
- 36 students earned college credit
- 145 graduates
- 12 new program offerings
- 171 courses recovered in Virtual Night School
- In-person and off-site adventures



Discovery World Family Engagement Day

High School Programming

Session I: June 13 to July 2, 2024

Session II: June 24 to July 25, 2024

**Specialty Session: July 8 to July 25, 2024
(new)**

**AP/IB Session: July 29 to August 16, 2024
(new)**

- Student Day: Monday through Friday from 8:00 a.m. to 1:00 p.m.
- Staff Day: Monday through Friday from 7:30 a.m. to 1:00 p.m.

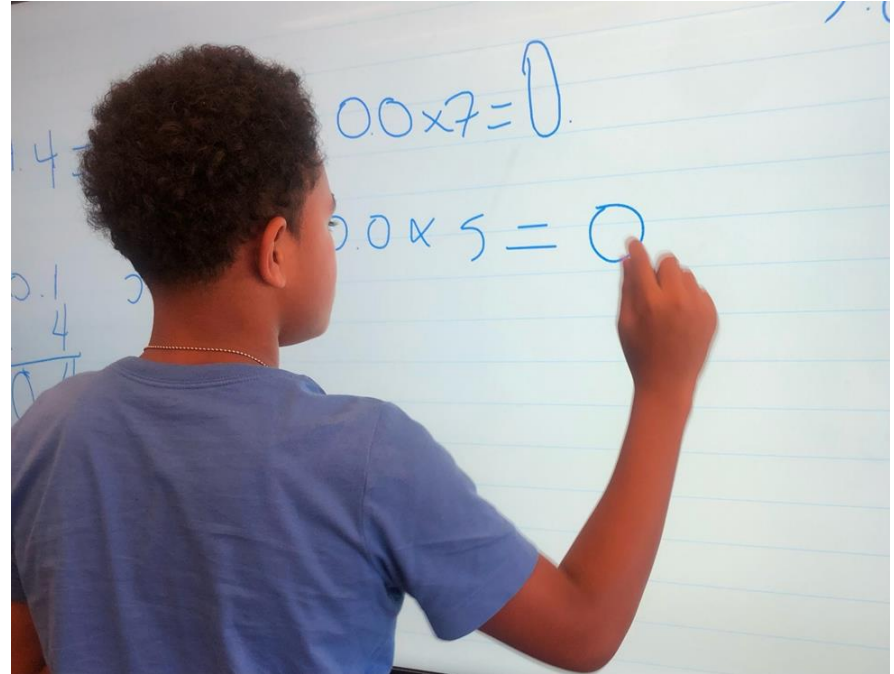


UWM Beach Soccer

Middle School Programming

June 24 to July 26, 2024 (5 weeks)

- Student Day: Monday through Friday from 8:00 a.m. to 12:00 p.m.
- Staff Day: Monday through Friday from 7:30 a.m. to 12:00 p.m.



Elementary Programming



June 24 to July 26, 2024 (5 weeks)

- Student Day: Monday through Friday from 8:00 a.m. to 12:00 p.m.
- Staff Day: Monday through Friday from 7:30 a.m. to 12:00 p.m.

Extended Learning Adventures

Innovative hands-on experiences integrated into the classroom:

- Wisconsin's unique heritage
- Natural environment
- Archaeology, paleontology, environmental science, and life cycles
- Farm life
- Arts-integrated activities
- Gardening/culinary



Wehr Nature Center Adventure

Sites and Registration

In selecting sites we review the following categories:

- School availability
- School enrollment trends
- Capacity
- Accessibility
- Location
- Wraparound services

Proposed Summer Site	Region	Grade Levels	# of Rooms	Capacity	Summer Programming
Elementary					
Bethune	Central	K3–8	25	452	ESL
Bruce	Northwest	K3–8	27	486	
Gaenslen	East	K4–8	45	687	ESY
Hayes Bilingual	Southwest	K3–8	37	651	Bilingual/ESL
Humboldt Park	East	K4–8	25	452	
Lancaster	Northwest	K4–8	31	560	
Longfellow	Southwest	K3–8	39	698	Bilingual/ESL
Marvin Pratt	Central	K3–8	17	280	
Townsend	Northwest	K4–8	24	398	
Victory	East	K4–8	27	479	ESL/ESY
High School					
Hamilton	High School	9–12	95	1,883	ESL
Madison	High School	9–12	98	1,629	
Obama	High School	K3–12	89	1,727	
WCLL	High School	K3–12	46	832	ESY
Montessori					
MacDowell	Central	K3–12	48	881	

Bridge Programs

- **High School, August 22 and 23, 2024**

- Goal: Enhance student confidence, self-esteem, academic preparation, and soft skills
- Location: 22 MPS high school sites
- Program length: 2 days

- **Middle School**

All 6–12 and traditional middle schools

- Provide sixth grade students with an opportunity to form realistic expectations of what middle school will be like
- Build a sense of community
- Explore extracurricular activities
- Experience the difference between elementary and middle school

Thank you.

Presenters:

Dr. John R. Hill, Director, Department of College and Career Readiness

Natalie Anderson, Manager, Extended Learning Opportunities

Dr. Leah Gilliam, Coordinator, Extended Learning Opportunities



Dr. Keith P. Posley, *Superintendent*

