

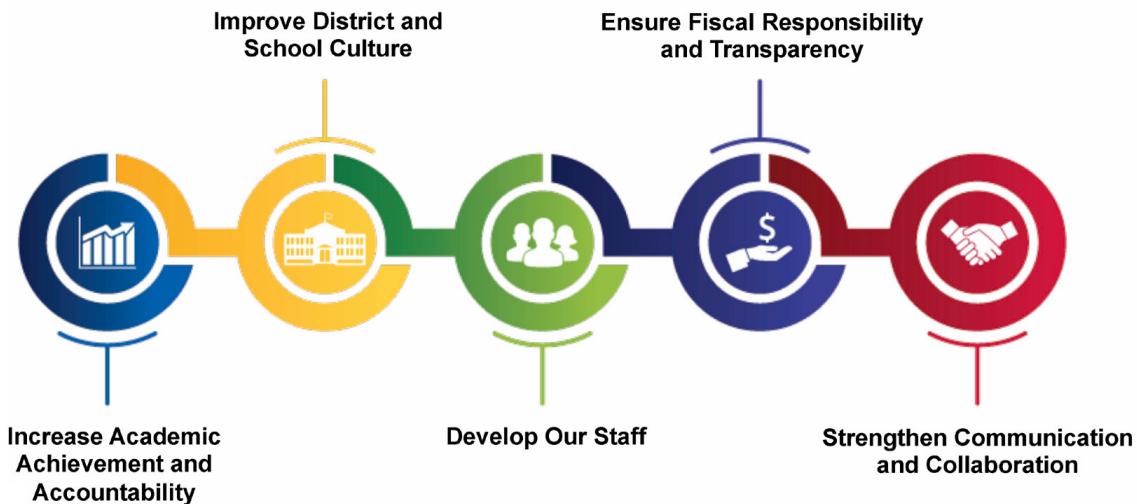


**MILWAUKEE
PUBLIC SCHOOLS**



Superintendent’s Report – December

The Superintendent’s Report is designed to provide the Milwaukee Board of School Directors and the MPS community with an update on current activities underway to support the district goals of academic achievement; student, family and community engagement; and effective and efficient operations as they are aligned to the district’s strategic objectives and the Five Priorities for Success.



SCHOOL VISITS

School visits remain a priority and serve as an excellent mechanism for gathering feedback to support district improvement efforts. This month, I had the opportunity to visit Rufus King Middle School for their IB reauthorization visit; Andrew Douglas Middle School for a ribbon cutting ceremony to celebrate the grand opening of the Twilight Center for middle school students; and Carver for a site visit regarding the Milwaukee Partnership Schools initiative. I was also at Riverside High School for the Battle of the Drumlines and Milwaukee School of Languages for the 2019 Language Summit.

EVENTS/PROGRAMS/ANNOUNCEMENTS

Andrew Douglas Twilight Center Grand Opening

The district celebrated the grand opening of the [Andrew Douglas Twilight Center](#) at the middle school. The Andrew Douglas Twilight Center is the eighth Twilight Center to open, and is the first such site to accommodate middle school students, ages 10-15. We celebrated the grand opening with family-friendly activities, giveaway items, and a ribbon cutting. The Andrew Douglas Twilight Center is open on Monday and Wednesday evenings from 5:00-8:00 p.m.

The Andrew Douglas Twilight Center is highlighted by the open gym and the game room, and will add enrichment workshops in the spring. Students got a taste of that programming at the grand opening

with Digital Music Production, which allows youth to create their own music, and Kreative Fruitz, a workshop where students can design their own artwork with fruit.

Twilight Centers offer programming and extended hours at select schools so young people in the city have a safe place to go during the evenings throughout the week. The following sites are home to high school Twilight Centers (ages 12-18); Barack Obama SCTE, Bay View High School, James Madison Academic Campus, North Division High School, Pulaski High School, South Division High School, and Washington High School. Hours for these sites are Mondays and Wednesdays from 6-9 p.m. and Saturdays from 6-10 p.m. This is a free drop-in program.

Visit mkerec.net/twilight for more information.



MPS Language Summit Showcases Language and Culture Programs

Families, students, teachers, education job seekers, and the community participated in the Milwaukee Public Schools Language Summit on Saturday, December 7, 2019. There were student performances showcasing cultures represented in our school programs. School exhibits allowed those attending to learn about MPS bilingual and immersion schools.

At the Summit, information about exciting programs in our schools was shared including the following:

- Bilingual and ESL Programs
- World Language Programs
- Language Immersion Programs



Maple Tree Students and Staff Reach for Excellence

The staff at Maple Tree School is finding a variety of creative ways to motivate students to learn. Recent efforts have centered on math, behavior, and leadership, including a very special guest.

To promote achievement in math, Principal Debra Rash has developed the Maple Tree Math Club. Primary and intermediate students are invited to participate during lunch hours on Tuesdays and Thursdays. The students are challenged by engaging in math discourse, practicing facts, and solving problems during their recess time. Participants are excited to build their knowledge of math.

Maple Tree Math Club began last year and continues to motivate students to strive for excellence in math. Ms. Rash teaches new topics every week and shares her passion for mathematics with students.



Students in 4th and 5th grade enjoyed a visit from a special guest in November. Former Green Bay Packers player LeRoy Butler spoke at Maple Tree about respect, bullying, leadership, and the importance of academics. Butler, who played his entire career with the Packers, was known for being a great teammate, and now visits schools to share his story and promote a team attitude. His message was designed to teach students to be leaders and motivate students to achieve. The 4th- and 5th-grade students felt honored to see him at Maple Tree School.

Maple Tree has also developed a program to celebrate VIP students who follow behavior rules consistently. In every classroom, VIPs are identified and earn extra privileges each month, including a special lunch with Principal Rash. Families are invited to join their students and share in the fun. The VIPs wear VIP buttons daily and are role models for their peers.

Young Men at Carver Academy Bond with Mentors

Some of the young men in grades 6 to 8 at Carver Academy say that Thursday is their favorite day of the week. Each Thursday, about 21 young men meet as part of Brutha'z Bond, a group designed to help youth learn life skills and give back to their community. Brutha'z Bond at Carver is active thanks to three dedicated volunteers. Kevin Vann coordinates the group with help from Sam Yates and Marquis Cowan.



Young men talk about issues that affect their lives and also learn important skills such as how to tie a tie, how to shake hands properly, how to work with adults, and ways to be part of a productive group.

Over the course of the school year, the young men and their mentors discuss rules and expectations, develop a code of ethics, recite the Brutha'z Bond creed, learn about the meaning of their name, learn how to make presentations, and take part in service work. The group gives back to the community through food drives for Easter and Thanksgiving every year at Mt. Zion Church and several other projects in the city.

Congratulations/Honors

Marvin Pratt School "Significantly Exceeds Expectations" on Wisconsin State Report Card

Milwaukee Public Schools congratulates the students, staff, and families at Pratt for reaching the top tier of the Wisconsin State Report Card and being rated as Significantly Exceeds Expectations.

Principal Janice Carter has worked tirelessly to make Pratt a place where students can achieve. When she accepted the role of principal, she immediately decided to make changes to the building and improve the climate in the school by making it comfortable and welcoming. Principal Carter found motivation from many sources including mentors who inspired her and provided a vision



to build the school into a success story. One goal was to implement strategies for teachers to look at test results and use the information to increase knowledge and respond to student needs. Now, students and teachers understand how to leverage test scores into learning experiences and higher achievement. Carter is also a proponent of school uniforms, believing that they reduce distractions. The majority of Pratt students wear uniforms daily. She tells students that when they get dressed every morning, they should think of themselves as coming to work. This type of thinking puts them in the frame of mind for learning.

Celebrations are also a regular part of school culture. Carter sees how students respond when they are rewarded for good attendance, being on time, and making improvements. Rewards range from pencils and stickers to recognition at school assemblies to special lunch events.

Milwaukee Public Schools is proud of the efforts and hard work at Marvin Pratt Elementary School. Keep up the good work—we are all MPS Proud!

Rufus King Captures Title in MPS Battle of the Drumlines

Crowds were cheering at Riverside University High School on Saturday, December 7, 2019, when MPS drumlines faced off in the annual Battle of the Drumlines! Students gave their best effort with precision drumming, footwork, showmanship, and stick tricks to present a thrilling competition.



Congratulations to the Rufus King Varsity Drumline, who took home the first place trophy!

This annual event is an opportunity for our students to gain so much through music including poise, teamwork, precision, and a strong work ethic. We are extremely proud of what all our students accomplished at this year's competition!

Awards were presented to high school and middle school groups. Congratulations to all our winners!

High Schools

First Place: Rufus King High School Varsity

Second Place: Riverside University High School

Third Place: Reagan High School

Middle Schools

First Place: Golda Meir School

Second Place: Milwaukee Parkside School for the Arts

Rufus King High School Students Receive All State Award For Theater Production

The Wisconsin High School Forensic Association recognized Rufus King High School for their outstanding achievement at the 2019 State Theater Festival, held November 21-23 at the University of Wisconsin-Milwaukee. The director, Erica Allemang-Reinke, and the cast and crew of the play received the All State Award for their production of the play *Pipeline*. Additionally, one of the productions actors – Nathan Berry, earned Outstanding Acting recognition.

Riverside Students Receive Interviews and Job Offers from Walmart

Local Walmart stores are tapping into a large pool of potential job candidates by partnering with Milwaukee Public Schools. For the second year, Walmart is working with MPS high schools to recruit, hire, and train students to provide employment opportunities and help teenagers cultivate their marketable skills. In November, Walmart held job interviews during the school day at Riverside University High School and extended 33 on-the-spot job offers.



Students filled out applications in advance of the interview event and arrived dressed for success to take part in a multi-step hiring process. All of those hired received their job offers by the end of the school day.

Youth who work for Walmart gain several benefits that boost their future college and career success, including flexible schedules and access to the retailer's partnership with Guild Education following graduation. Through the Guild Education program, Walmart employees can earn an online bachelor of arts degree in business administration or supply chain logistics for as little as \$1.00 per day.

MPS is committed to ensuring that all students graduate from high school on time, prepared for college, career, and life. Walmart's partnership will provide opportunities to students who may feel that college is unaffordable or out of reach.

For more MPS highlights, click the link below to view our November "Recap" video:

<https://youtu.be/XC8zEcu6F8I>

