



**MILWAUKEE
PUBLIC SCHOOLS**

Ambitious Instruction and the Strategic Plan: One Initiative

September 2024

**Eduardo Galván
Interim Superintendent**



MILWAUKEE
PUBLIC SCHOOLS

Ambitious Instruction and the Strategic Plan: One Initiative

Presenters

Dr. Felicia Saffold

Senior Director

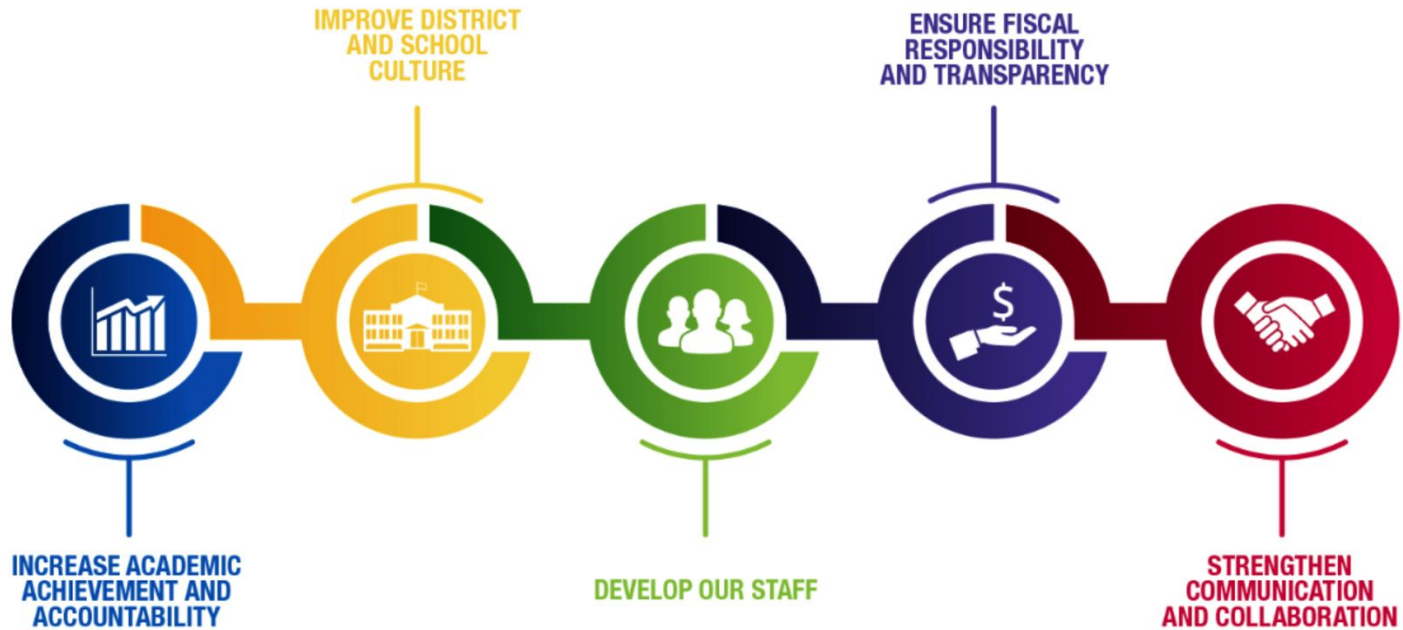
Department of Curriculum and
Instruction

Dr. Travis Pinter

Senior Director

Department of Specialized Services

Five Priorities for Success



Success = Alignment and Connection

MPS Strategic Plan



Academic Standard of Care

1. **Build positive relationships with students and families.**
2. Know what each student needs in each content area.
3. **Conduct formative assessments regularly.**
4. Differentiate instruction for students.
5. Instruct students at or above grade level.
6. Utilize scaffolding for students above and below grade level.
7. Design instruction using the content standards.
8. **Use district-adopted/endorsed materials during instruction.**
9. Center learning around student interests, voice, and choice.
10. Design learning experiences for students that are inquiry-based.

Ambitious Instruction



ONE initiative!

Moving Our Students Forward



EMPOWER: Cultivating Learner Identity and Agency

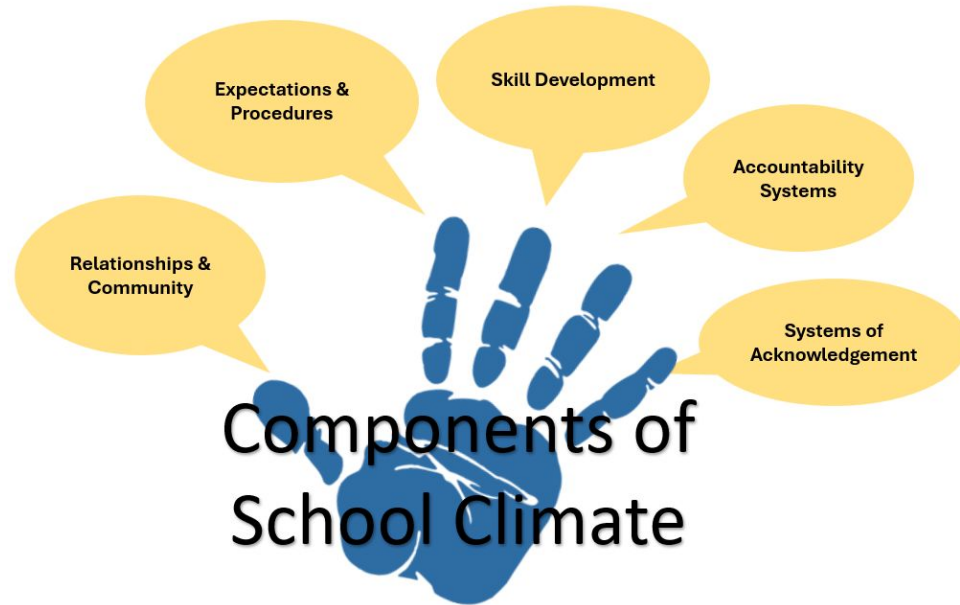
Student-run business in Montessori grades 7–12

- Joyful approach to learning
- Relevance and applicable to student lives
- Authentic learning
- Student choice
- Demonstrating knowledge of standards
- Help students know their strengths and areas of growth



NURTURE: Emotional Safety and a Supportive Environment

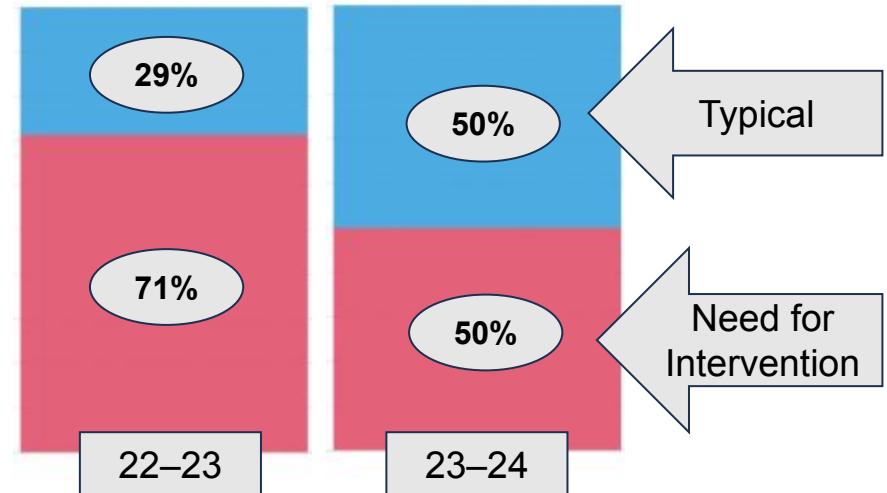
Strategic Plan (Student Achievement):
Students will feel emotionally and physically safe in school.



NURTURE: Emotional Safety and a Supportive Environment

How Do We Measure It?

- *Belonging Before Learning*
 - Monitoring implementation, measuring outcomes, maintaining/modifying practices
- Well-being survey data
- PBIS
- Second Step
- DESSA



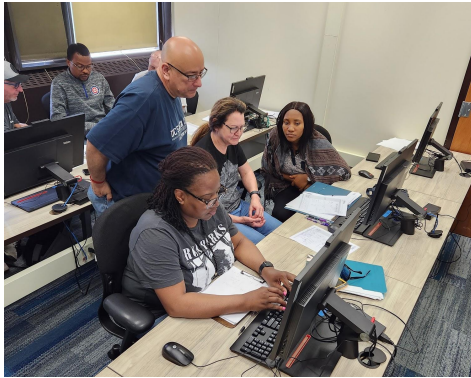
GUIDE: Instructional Transformation

Hattie: Teacher efficacy is the number one influence on student achievement.

	Then	Now
Coaching Focus	Regional	New educators
Coaching Caseloads	Variable	Maximum of 12 educators
Approach to Coaching	Variable	Coaching cycles
Frequency of Coaching	Variable	Minimum of 3 times per month
Supervision Meetings	Variable	Weekly meeting to study data or provide feedback
Coaching Impact	Variable	Clear and measurable



GUIDE: Instructional Transformation



Middle/High School Summer Institute – Mathematics

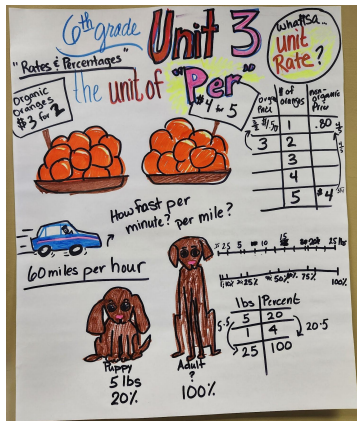
- ★ Teachers collaborated to understand the mathematics content and plan each unit of instruction for the first semester of the 2024–25 school year.

What teachers are saying....

“...very critical in helping teachers prepare for teaching...”
– Algebra 2 teacher

“It is really helpful to have designated time to plan for the units...” – Seventh grade teacher

“I hope this training can be mandatory for all math teachers or anyone else teaching math in the district.”
– Algebra teacher





**MILWAUKEE
PUBLIC SCHOOLS**

Thank You!