

# Northwest Regional Showcase

December 8, 2020

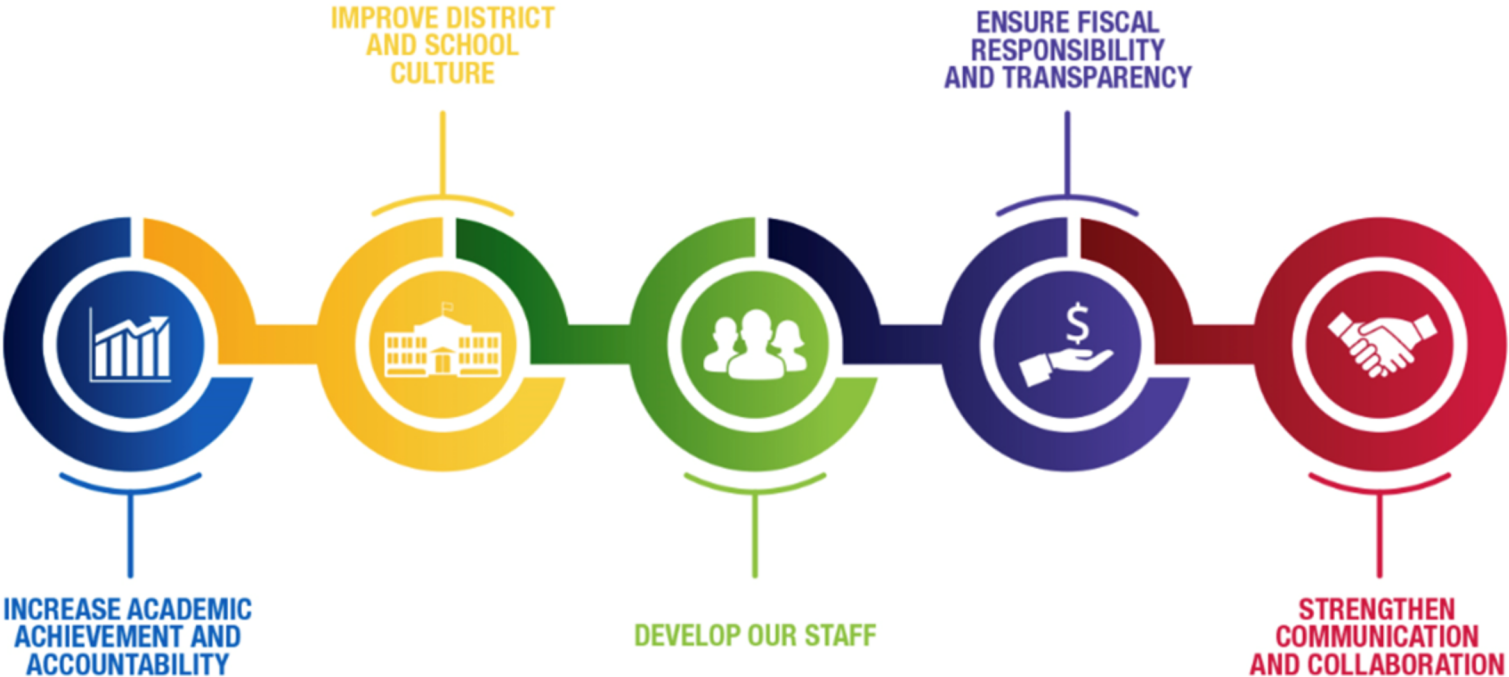


**MILWAUKEE  
PUBLIC SCHOOLS**

**Presenters:** Patrick Chatman, Instructional Leadership Director, Office of School Administration  
Dr. Bridget Araujo, Principal of Hampton Elementary

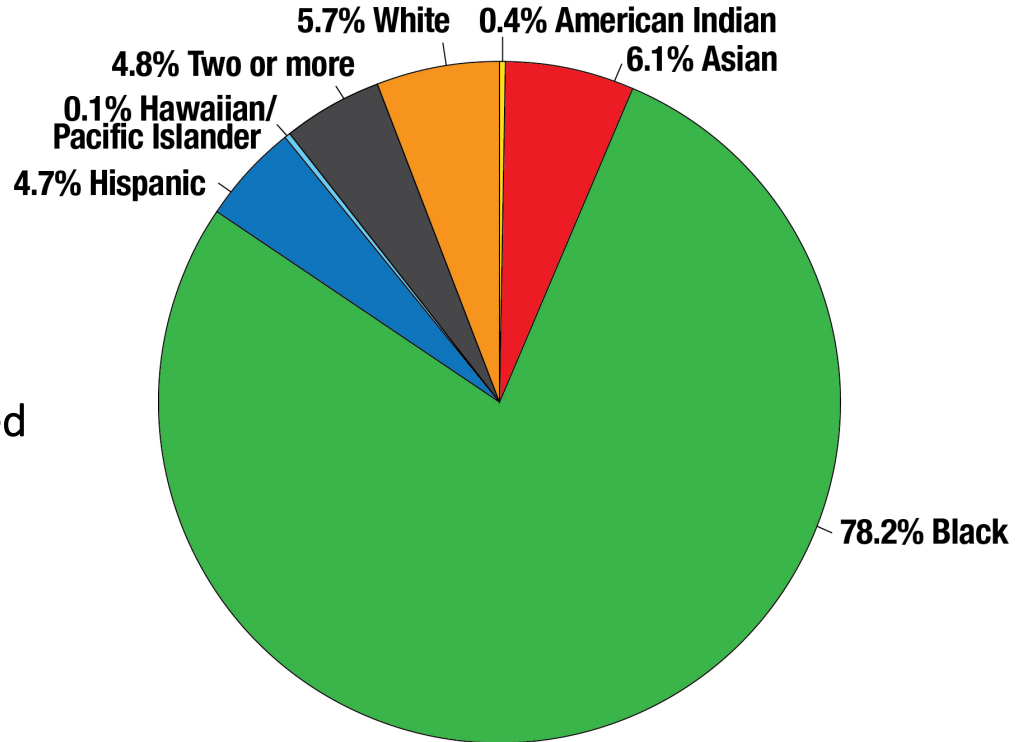
Dr Keith P. Posley, Superintendent

# Five Priorities for Success



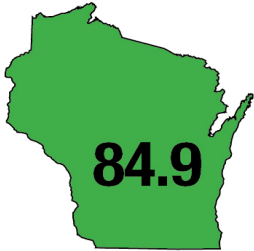
# Northwest Region Student Demographics

- 8,886 students
- 25 schools
- 2.1% English language learners
- 20.8% students with disabilities
- 84.5% economically disadvantaged
- 83.4% attendance rate



# Northwest Region Data

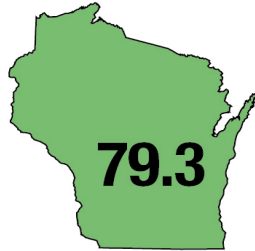
Overall Score



Significantly Exceeds Expectations

**Parkview Elementary**

Overall Score

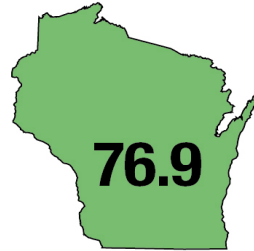


Exceeds Expectations

**Milwaukee German Immersion**

Milw. Sign Lang.	67.5
Congress	67.3
Kilbourn	67.0
Stuart	66.1
Kluge	65.1

Overall Score

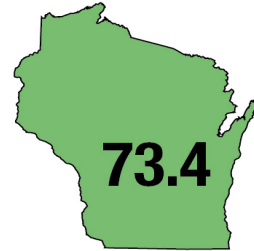


Exceeds Expectations

**Hampton Elementary**

Craig Montessori	64.9
Barton	64.5
Thurston Woods	64.1
Ninety-fifth St.	63.4
Maple Tree	61.0
Grantosa	60.8

Overall Score

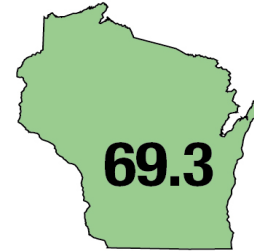


Exceeds Expectations<sup>^</sup>

**Bryant Elementary**

Goodrich	59.7
Thoreau	58.5
Eighty-first St.	58.3
Hawthorne	56.2
Carson	55.5
Emerson	53.2

Overall Score



Meets Expectations<sup>^</sup>

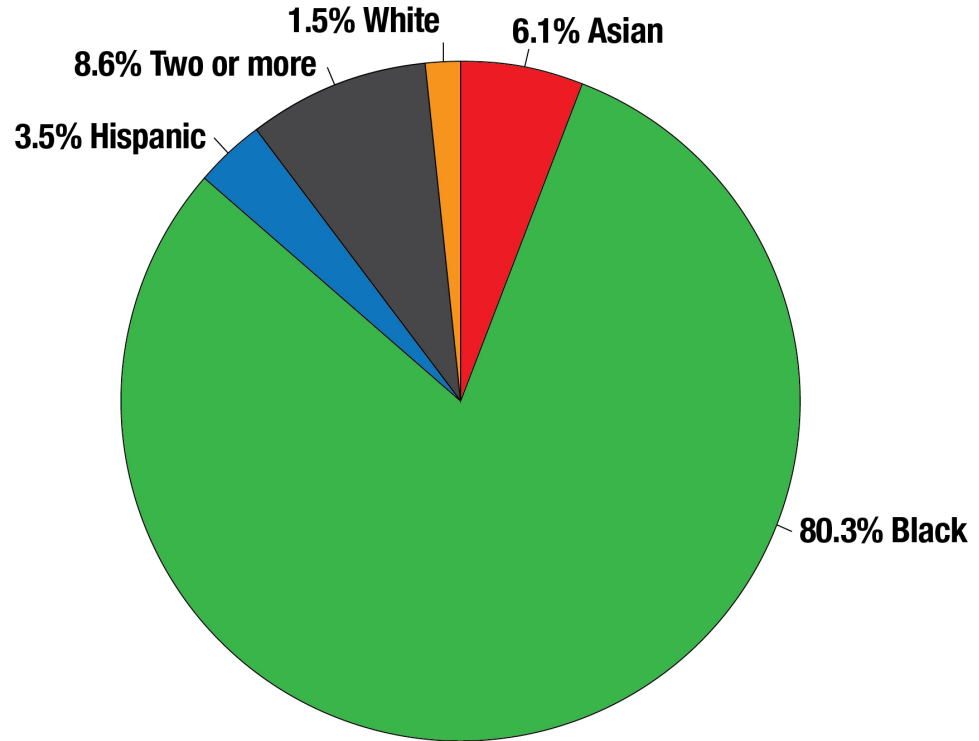
**Engleburg Elementary**



**New Additions to the NW Region:**  
Bruce, Browning, and Lancaster



# Hampton School Student Demographics



- 198 students
- 0.5% English language learners
- 27.3% students with disabilities
- 91.9% economically disadvantaged
- 76.6% attendance rate



# Hampton Vision

Hampton Elementary School will work as a Professional Learning Community to increase student achievement and reduce the achievement gap by providing consistent and rigorous standards-based instruction for all students in a safe and engaging environment to prepare them for success in the future.

We will collaboratively plan data driven, engaging lessons based on CCSS, along with setting high expectations, developing positive relationships, and reflecting continually.

# School Programs

---

- Milwaukee Art Museum – Junior Docent Program
- Zoo Ambassador Program
- Danceworks Mad Hot Ballroom and Tap
- Basketball Team
- Playworks
- Mindfulness Mentors



# Points of Pride – Family Engagement

- Monthly SEC meetings
- Workshops with Penfield to expand knowledge and resources for parents
- Monthly Family Fun Nights
- Yearly family Milwaukee County Zoo trip
- Open and frequent communication with families by classroom teachers
- Monthly newsletters to families with resources, updates, community events

## Parent & Family Engagement

Involving families means students' academic success. We provide engaging learning opportunities for families to participate in together.



# Points of Pride – Equitable Systems of Support



## Wisconsin Rtl Center Awards

2018-19 **Silver** in Behavior, Reading, and Math

2017-2018 **Silver** in Behavior and Gold in Reading and Math

2016-17 **Silver** in Reading and **Bronze** in Behavior and Math

### Equitable System of Supports

Recognized by the Wisconsin Department of Public Instruction for efforts to implement an equitable system of supports in reading, math, and behavior.





# Points of Pride – Dedicated Staff

Hampton has a dedicated staff who are invested in the school. Teachers and staff work together making Hampton their forever home. They work and plan collaboratively to support students and families.

- Low teacher turnover rate
- Range of years: 3 months to 26 years at Hampton
- Majority of staff are veteran teachers with more than 10 years experience with the majority of those years at Hampton



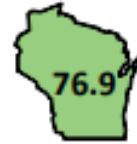
# School Report Card

- **Exceeded Expectations** 2017-18 and 2018-19
- **Met Expections** 2016-17
- School Growth – above the state score for ELA and Math
- Deduction for absenteeism



**Hampton Elementary**  
Milwaukee | Public - All Students  
School Report Card | 2018-19 | Summary

Overall Score



★★★★☆  
Exceeds Expectations

Overall Accountability Ratings	Score
Significantly Exceeds Expectations	83-100 ★★★★★
Exceeds Expectations	73-82.9 ★★★★☆
Meets Expectations	63-72.9 ★★★☆☆
Meets Few Expectations	53-62.9 ★★☆☆☆
Fails to Meet Expectations	0-52.9 ★☆☆☆☆

School Information

Grades	K3-5
School Type	Elementary School
Enrollment	234
Percent Open Enrollment	0.0%
Race/Ethnicity	
American Indian or Alaskan Native	0.0%
Asian	5.1%
Black or African American	84.6%
Hispanic/Latino	5.2%
Native Hawaiian or Other Pacific Islander	0.0%
White	0.9%
Two or More Races	4.3%
Student Groups	
Students with Disabilities	29.5%
Economically Disadvantaged	99.6%
English Learners	0.0%

Priority Areas	School Score	Max Score	K-5 State Score	K-5 Max
<b>Student Achievement</b>	<b>37.6/100</b>		<b>65.7/100</b>	
English Language Arts (ELA) Achievement	15.8/50		31.6/50	
Mathematics Achievement	21.8/50		34.1/50	
<b>School Growth</b>	<b>95.4/100</b>		<b>66.0/100</b>	
English Language Arts (ELA) Growth	45.4/50		33.0/50	
Mathematics Growth	50.0/50		33.0/50	
<b>Closing Gaps</b>	<b>73.3/100</b>		<b>73.9/100</b>	
English Language Arts (ELA) Achievement Gaps	35.8/50		37.9/50	
Mathematics Achievement Gaps	37.5/50		36.0/50	
Graduation Rate Gaps	NA/NA		NA/NA	
<b>On-Track and Postsecondary Readiness</b>	<b>74.9/100</b>		<b>86.8/100</b>	
Graduation Rate	NA/NA		NA/NA	
Attendance Rate	69.8/80		74.5/80	
3rd Grade English Language Arts (ELA) Achievement	5.1/20		12.3/20	
8th Grade Mathematics Achievement	NA/NA		NA/NA	

Priority Area Weights	Percentage Weight
Student Achievement	5.0%
School Growth	45.0%
Closing Gaps	25.0%
On-Track and Postsecondary Readiness	25.0%

Note: For details about how weights are determined, see weighting calculator:  
<https://nea.dpi.wisconsin.gov/overall-weighting-calculator/>

Student Engagement Indicators	Total Deductions: -5
Absenteeism Rate (goal <13%)	Goal not met: -5
Dropout Rate (goal <6%)	Goal met: no deduction

Test Participation Information				
Includes Forward Exam (grades 3-8), ACT Aspire (9 and 10), ACT (11), and Dynamic Learning Maps (3-11)				
Group	ELA 1-Year	ELA 3-Year	Math 1-Year	Math 3-Year
All-Students Rate	99.2%	99.7%	98.5%	99.5%
Lowest Subgroup Rate: Black	99.1%	99.7%	98.2%	99.4%



# Opportunities for Growth

---



- Increase attendance
- Reduce absenteeism
- Increase enrollment
- Work to decrease the academic achievement GAP for students with disabilities

# Thank you.

---



Dr. Keith P. Posley, *Superintendent*

