

COVID-19 Update

January 6, 2022

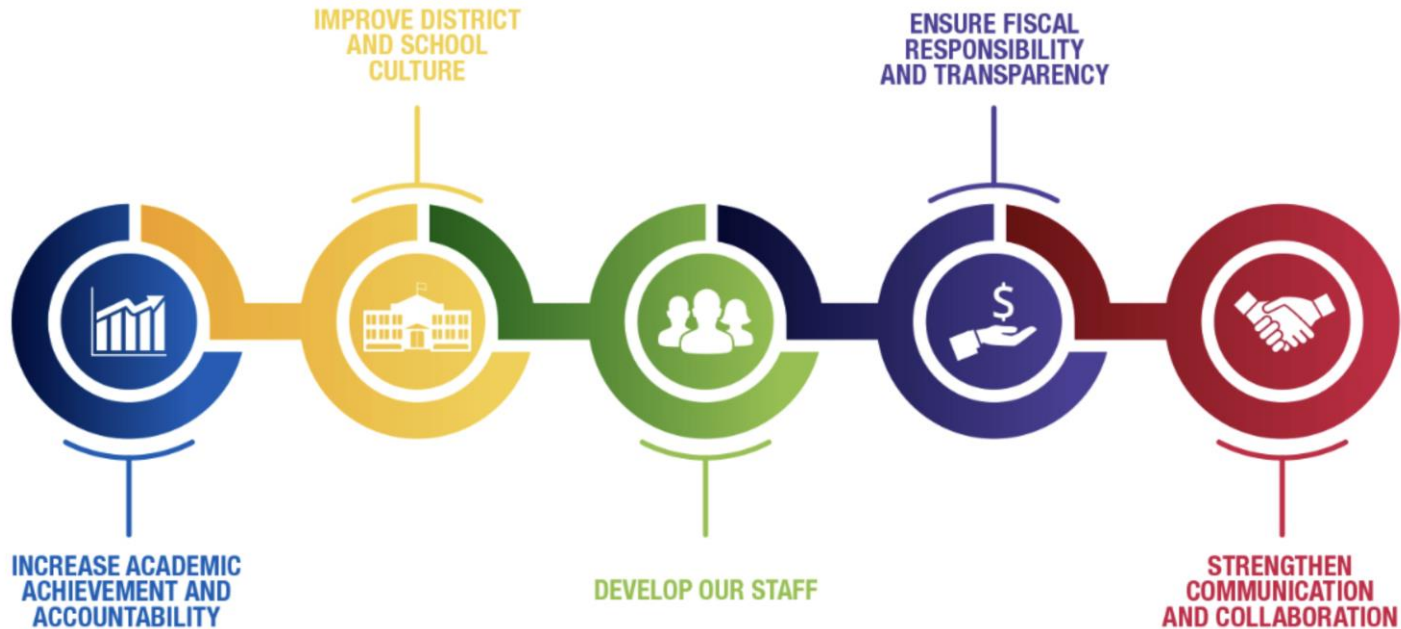


MILWAUKEE
PUBLIC SCHOOLS



Dr. Keith P. Posley,
Superintendent

Five Priorities for Success



Roadmap to Readiness

Guiding Principles

- Health and Safety
- Quality Instruction
- Student and Staff Support
- Efficient and Safe Operations
- Effective Communication

Current Health and Safety Protocols

- Wear face mask in all MPS locations
- Practice physical distancing
- Wash hands often
- Get the vaccine or booster
- Stay home if sick



Current Health and Safety Protocols continued

- Report positive cases, symptoms and close contacts
- Utilize isolation rooms
- Isolate and quarantine as necessary
- Facilitate districtwide COVID-19 testing



Current Health and Safety Protocols continued

- Replace filters and improve air quality
- Continue advanced and daily cleaning
- Clean and disinfect high-touch surfaces
- Provide personal protective equipment

Current Health and Safety Protocols continued

- Distribute student and staff technology
- Transition to virtual learning when positive cases reach 3% per 14-day period
- Offer two virtual learning programs
- Conduct virtual staff meetings and professional development sessions

Updates

- Purchased additional KN95 and N95 masks for students and staff
- Mandated staff vaccination
- Expanded vaccination incentive for students
- Requested additional school vaccination clinics

Updates continued

Additional COVID-19 testing opportunities

- January 1 & 2: 448 staff tested
- January 3: 1,913 staff and students tested

Student and Staff Support

District staff assigned to support schools:

- Central staff
- School support teachers and coaches
- Limited term employees
- Substitute teachers

Student and Staff Support continued

- Social and emotional learning
- Student vaccination incentive
- Early release days
- Staff bonus and vacation compensation
- Employee assistance program

Student and Staff Support continued

- Alternative MPS work locations for central staff
- Visitors by appointment only to schools and central buildings
- Limited capacity at school events and activities

Student and Community Support

- Student meal distribution locations
- Twilight Centers
- Recreation Programs
- Athletics
- School events – i.e., plays, musicals



Extended Learning Opportunities

- Virtual learning options
- Targeted interventions
- Compensatory afterschool support

Considerations

- Assess schools on a case-by-case basis
- Adjust isolation and quarantine guidance
- Request waivers from the Department of Public Instruction
- Review staffing and all salary schedules

Considerations continued

- Update emergency paid sick leave
- Assess student transportation
- Anticipate student and family needs

Thank you.



Dr. Keith P. Posley, *Superintendent*

© 2022 Milwaukee Public Schools • 17